

# DUNGEONS & LASERS<sup>®</sup>

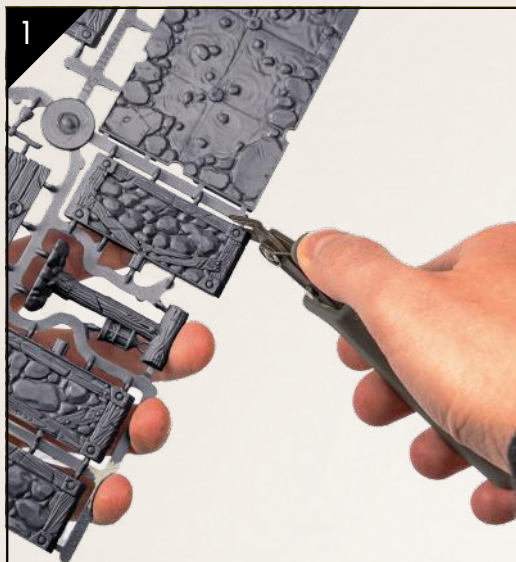
WIP



## BELLY OF THE BEAST CORE SET

MANUAL

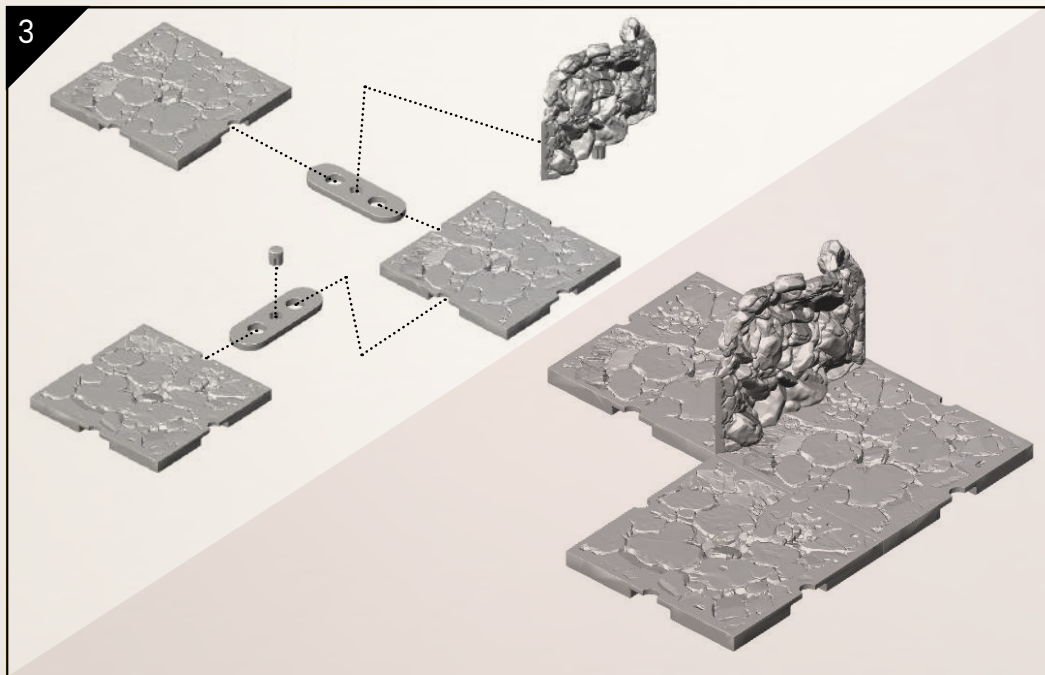
# HOW TO BUILD A ROOM?



Cut the elements from the sprue with a pair of clippers.

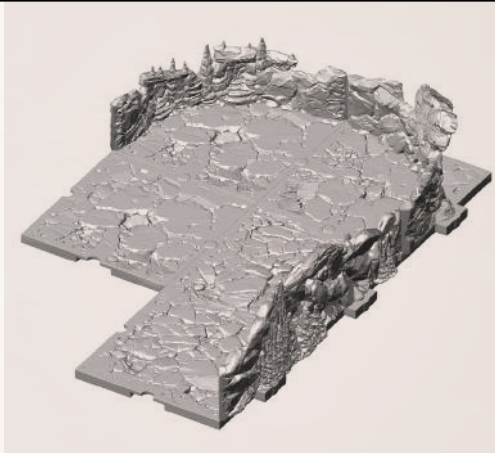
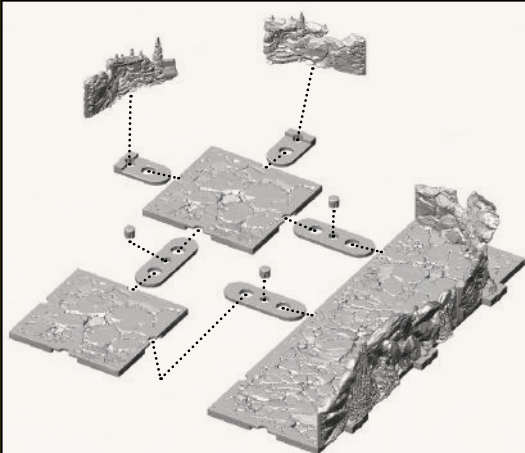
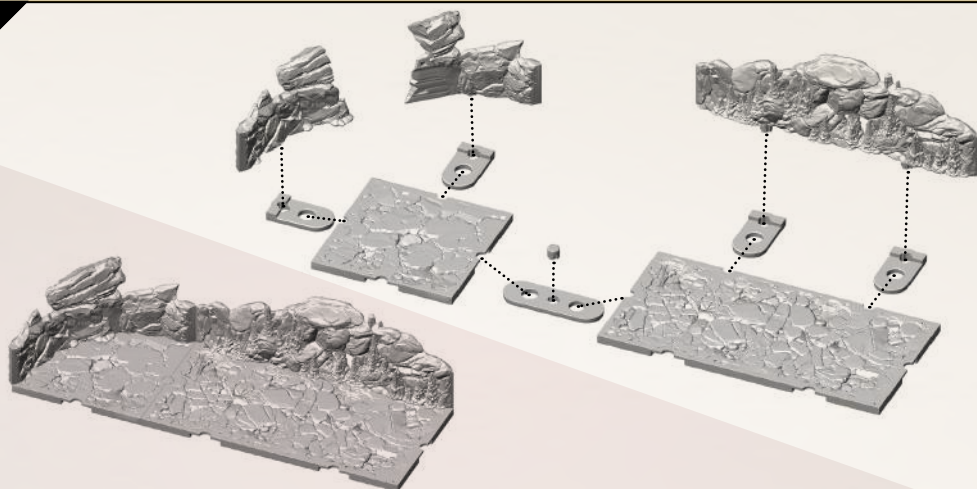


Remove any leftovers with a scalpel.



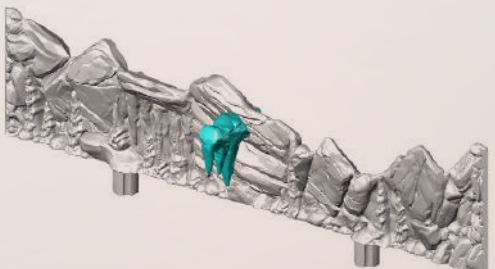
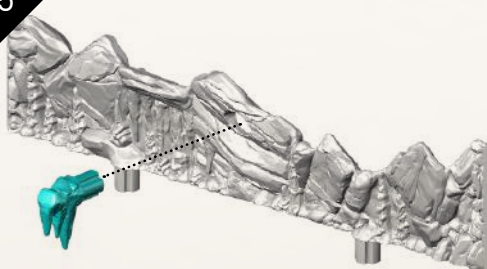
Connect any floors and walls using the provided clips.

4



Curved walls require you to first join both sides of the wall before inserting it into the clip hole.

5

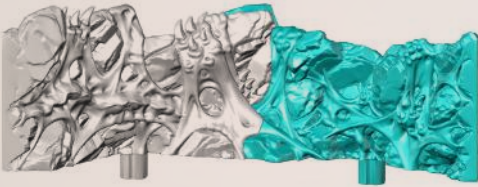
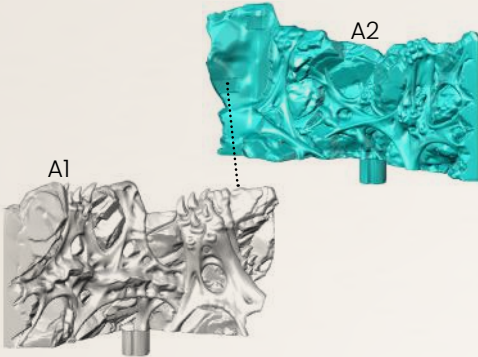


Place your desired props in the holes on the walls and floors.

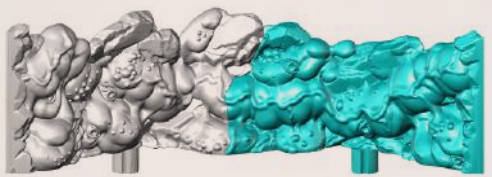
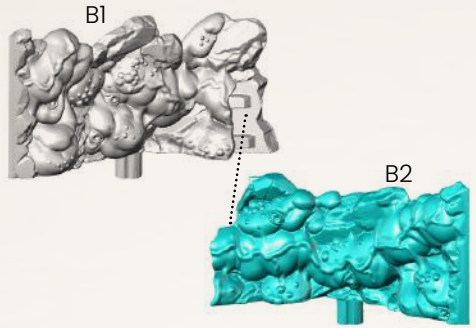


# COMPONENTS

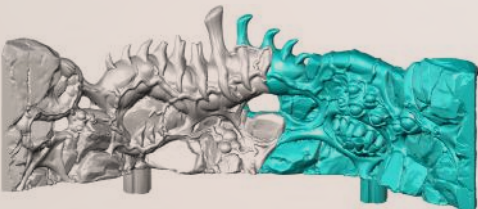
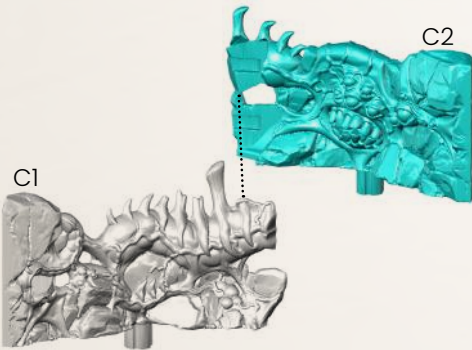
Curved Half Wall 1



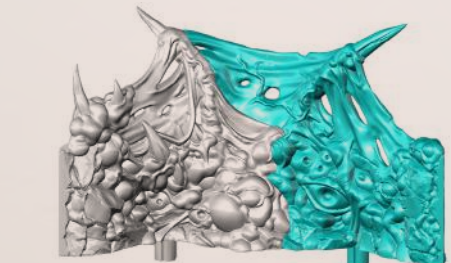
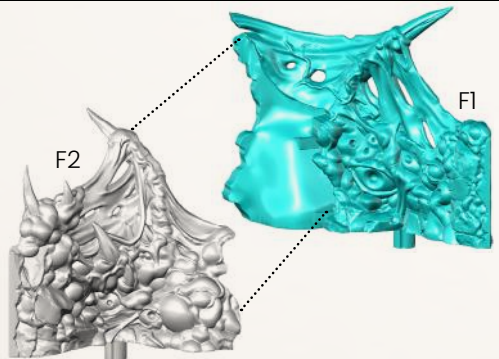
Curved Half Wall 2



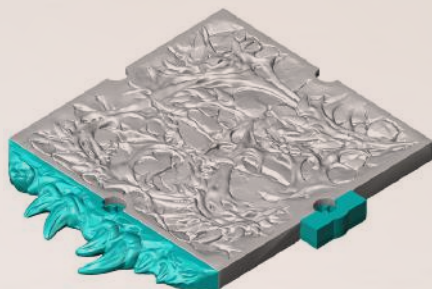
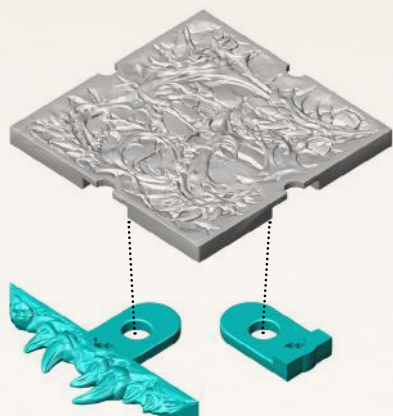
Curved Half Wall 3



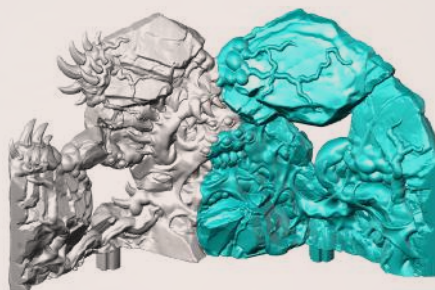
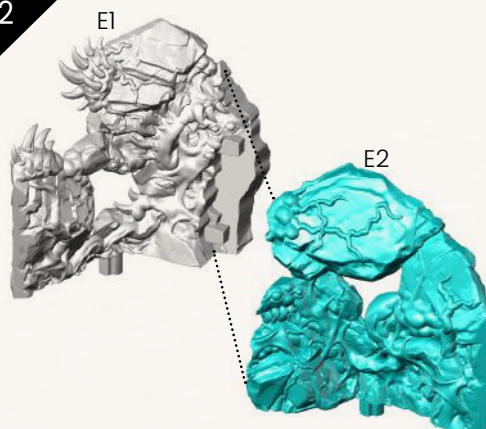
Curved Wall 2



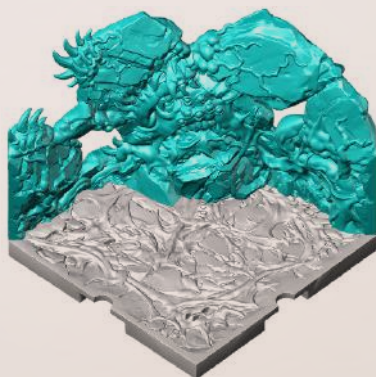
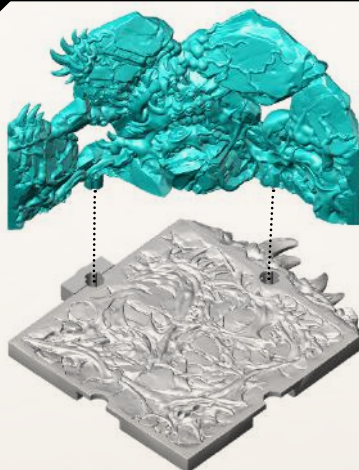
1

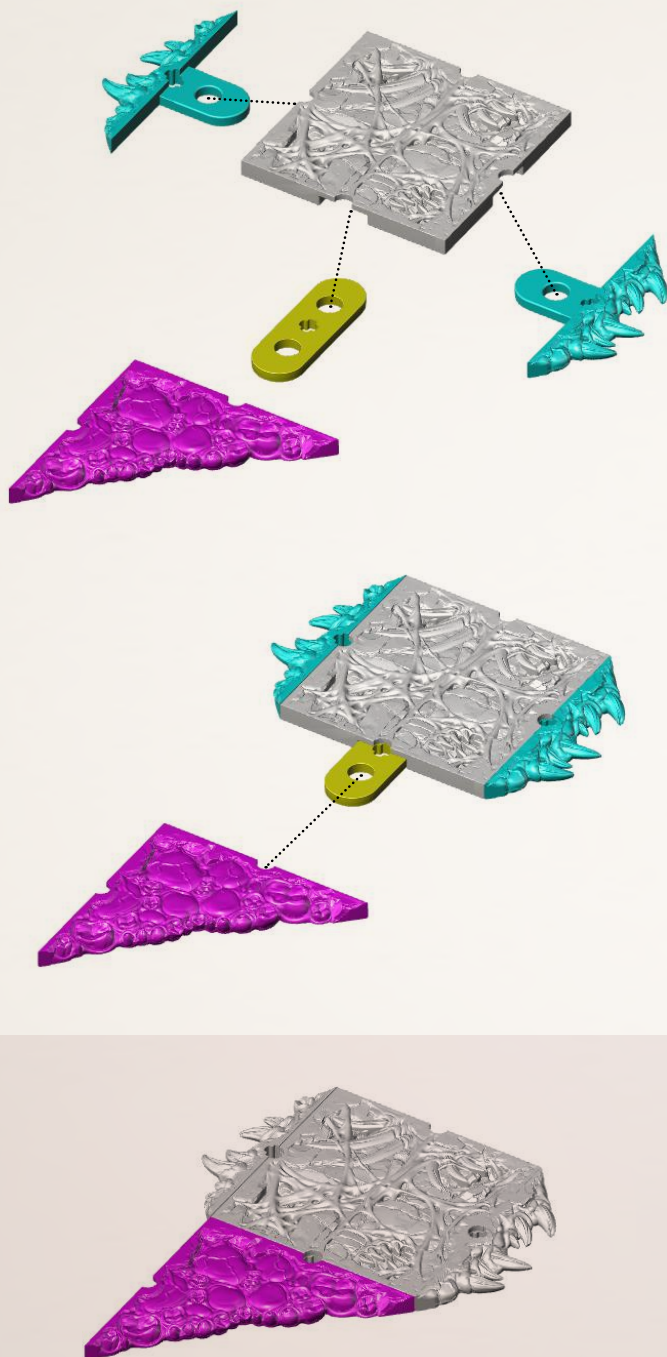


2



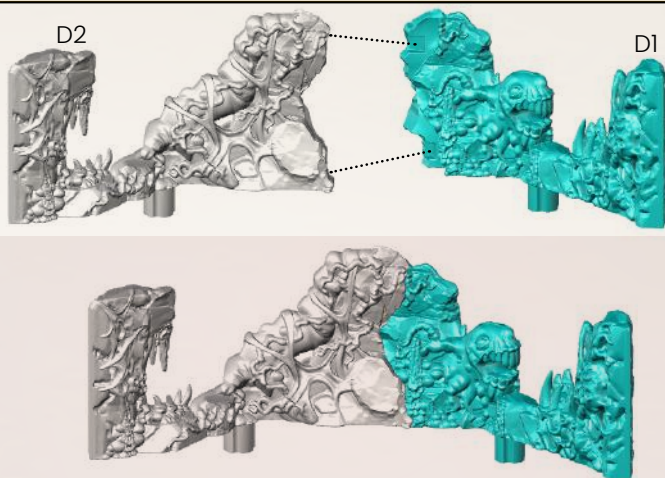
3



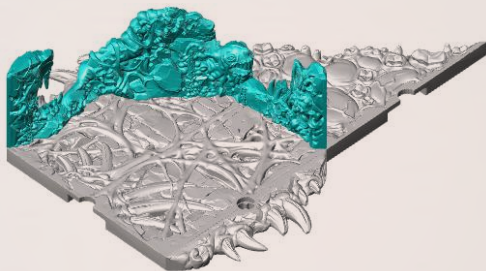
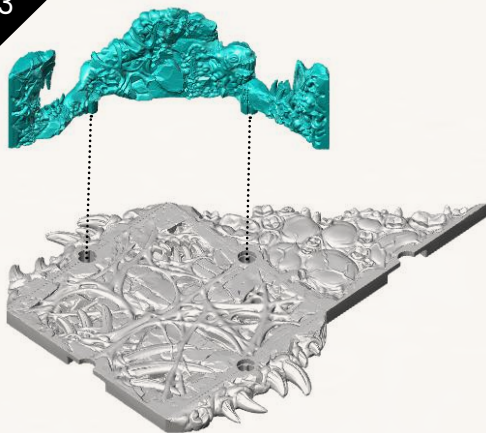




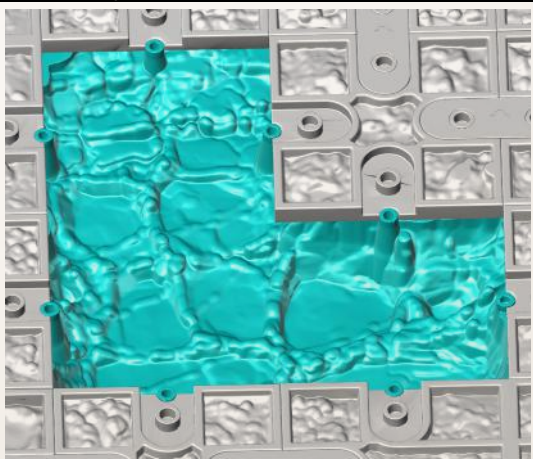
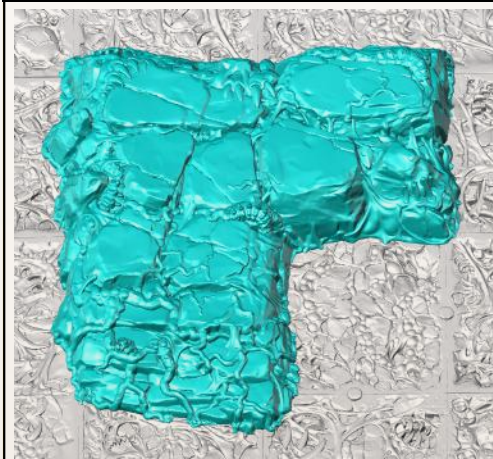
2



3

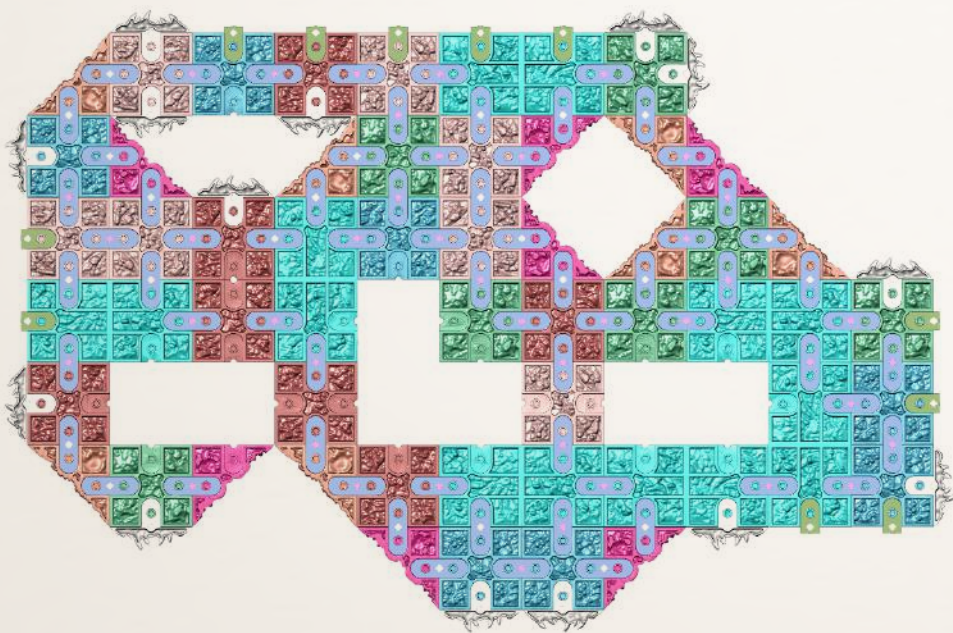
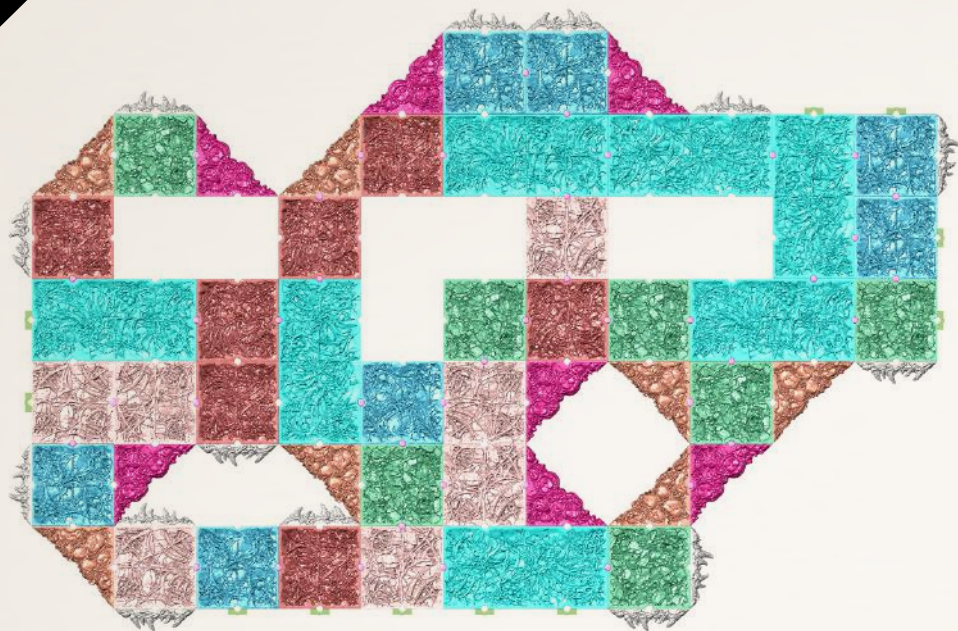


Hills (Example of assembly)



# EXAMPLE OF ASSEMBLY

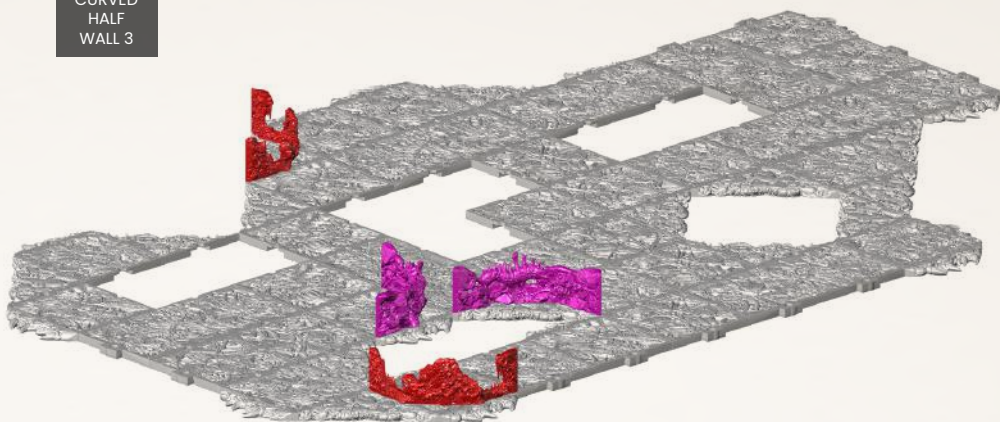
1





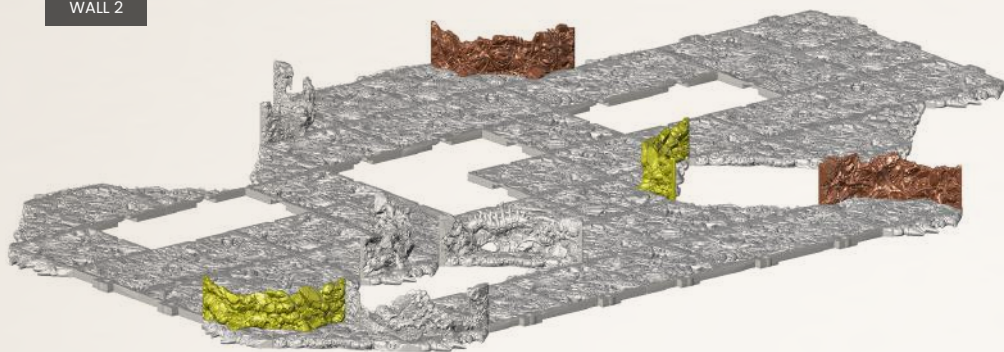
CURVED  
HALF  
WALL 4

CURVED  
HALF  
WALL 3



CURVED  
HALF  
WALL 1

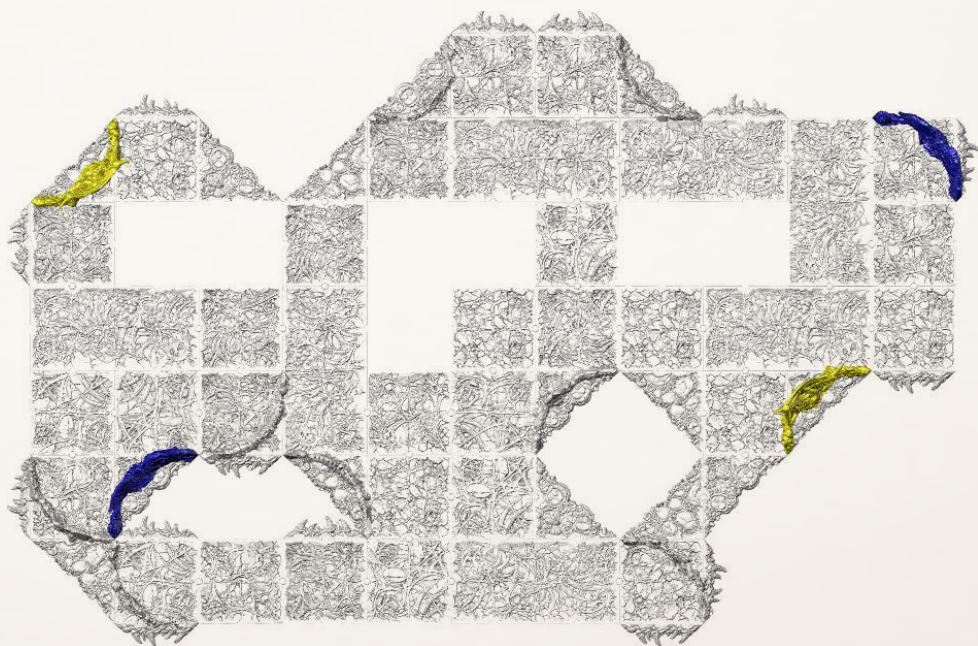
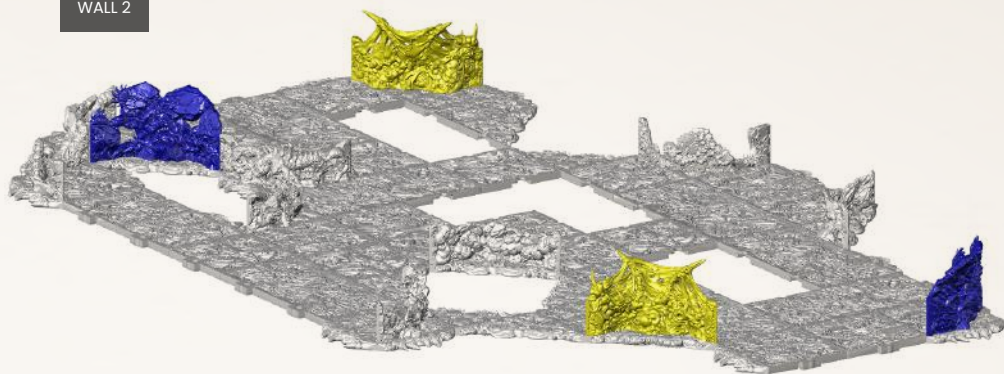
CURVED  
HALF  
WALL 2



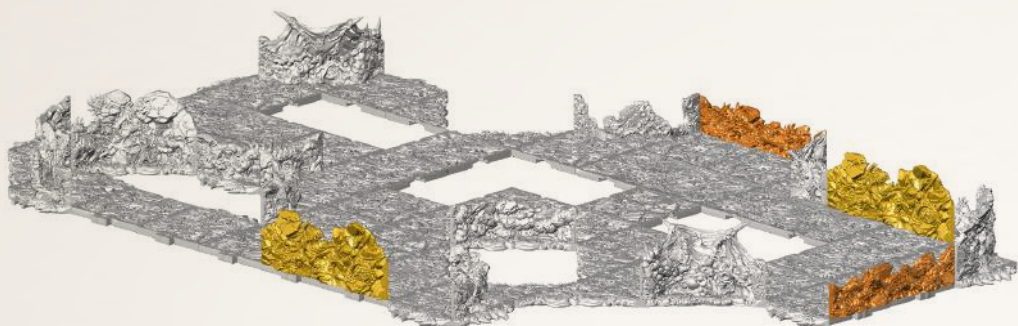


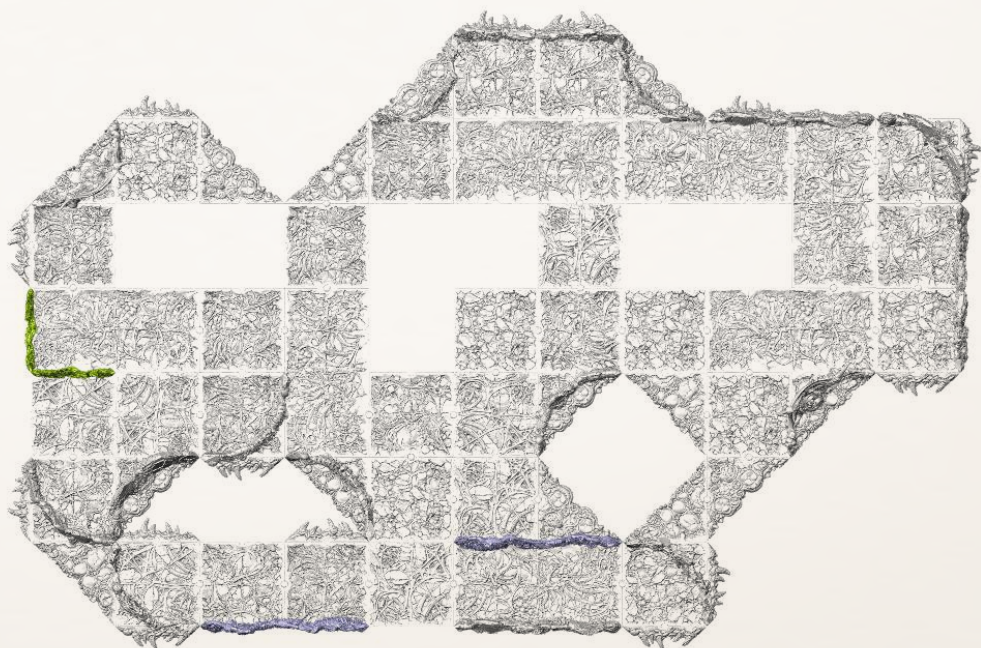
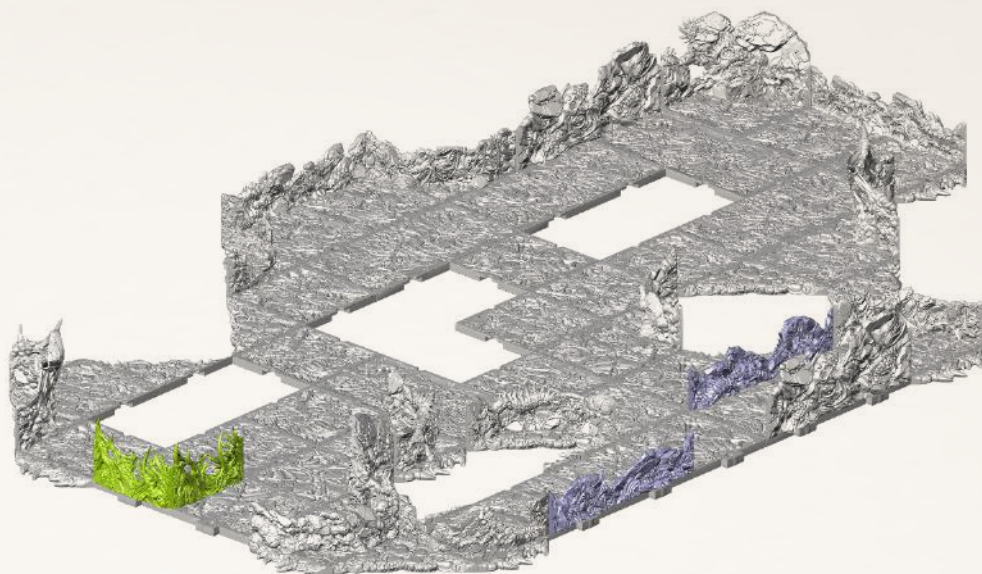
CURVED  
WALL 1

CURVED  
WALL 2

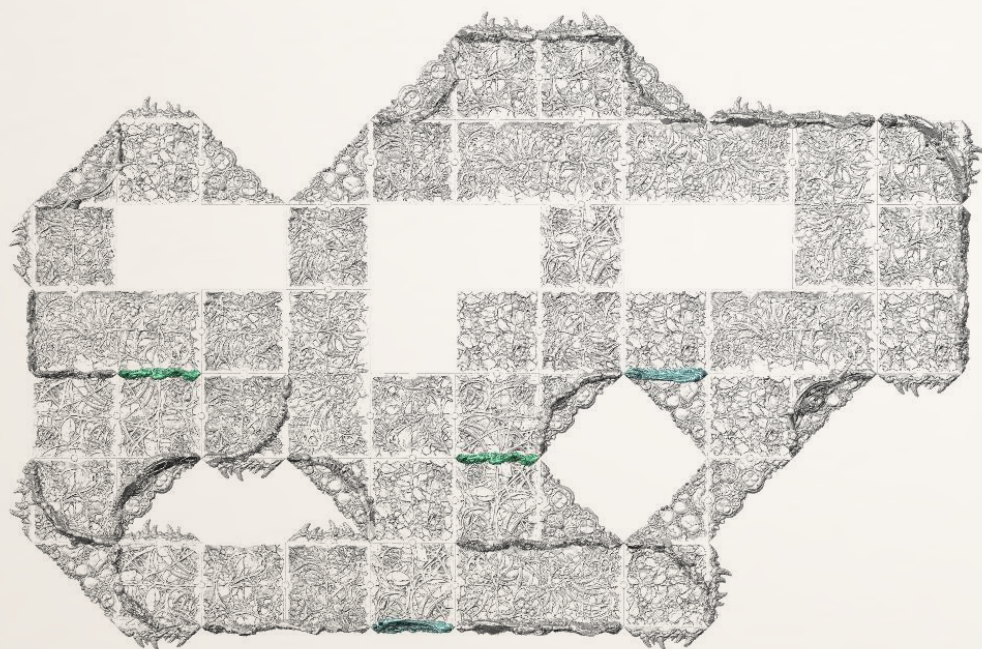
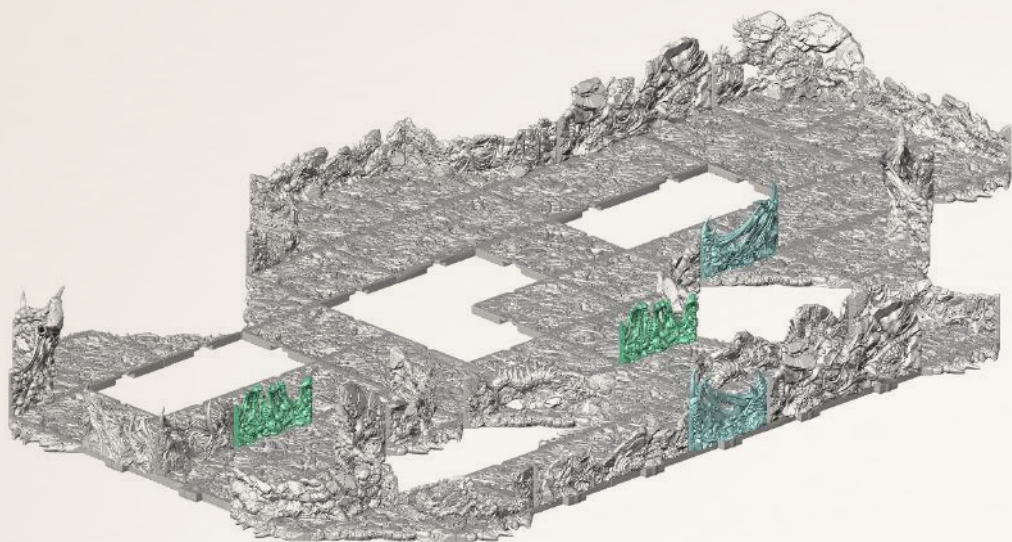




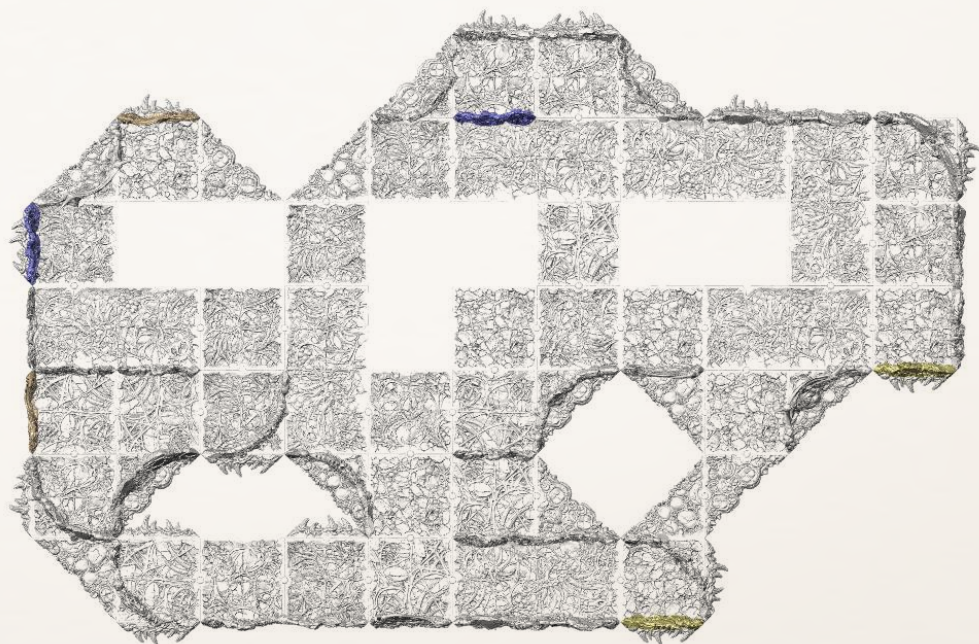
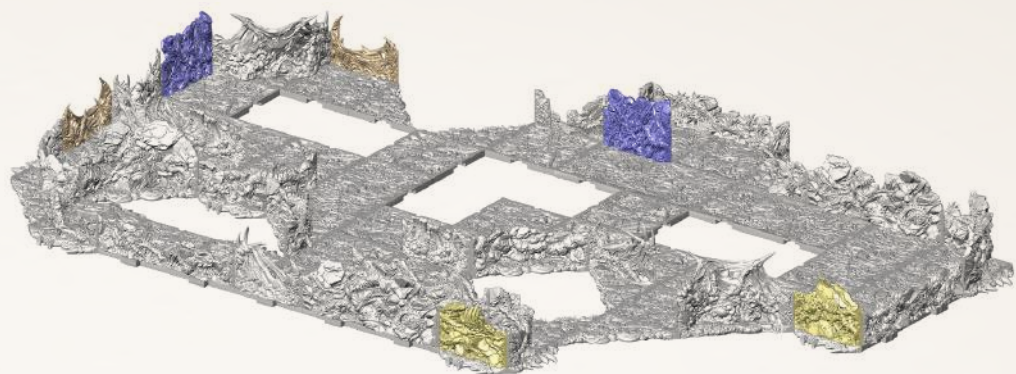


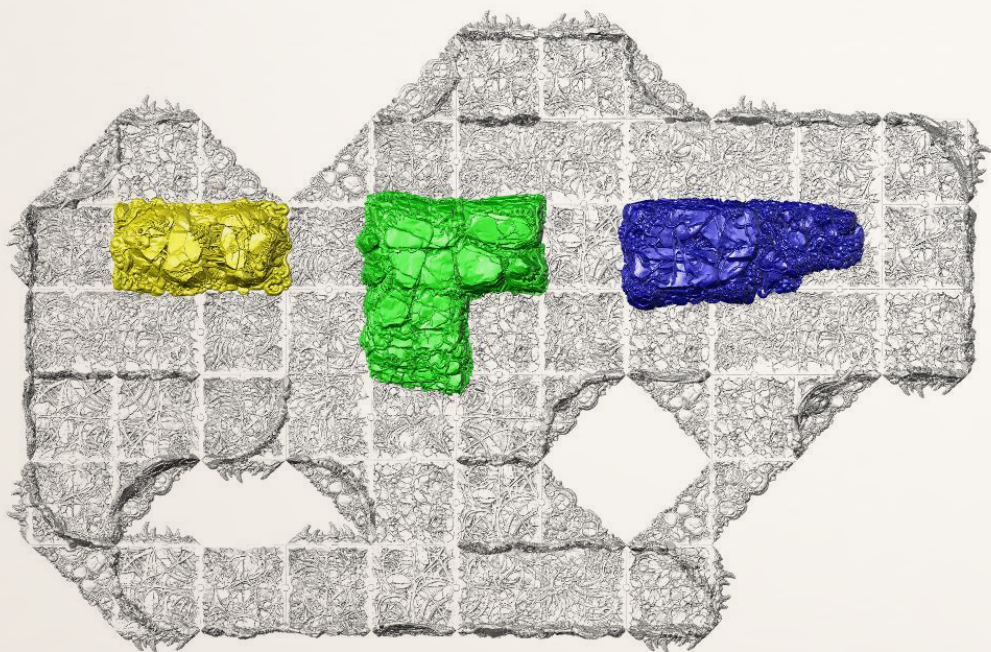
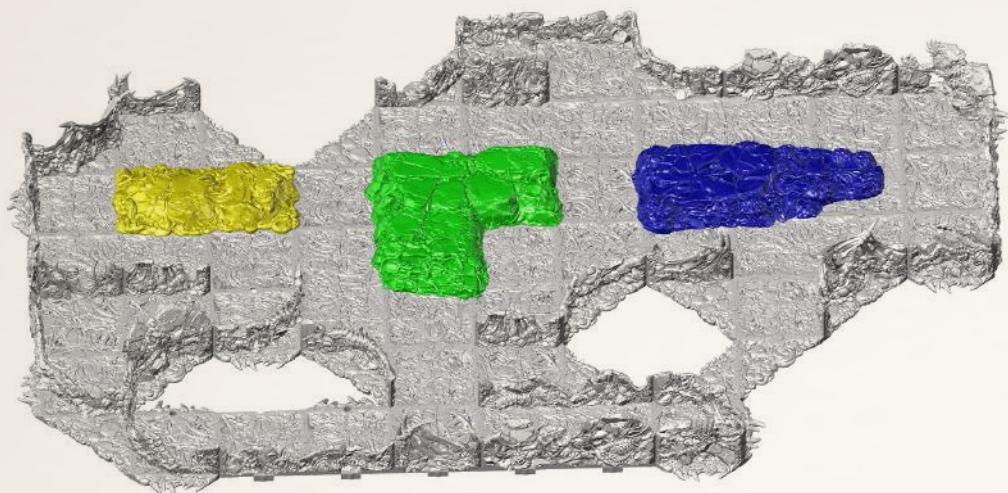




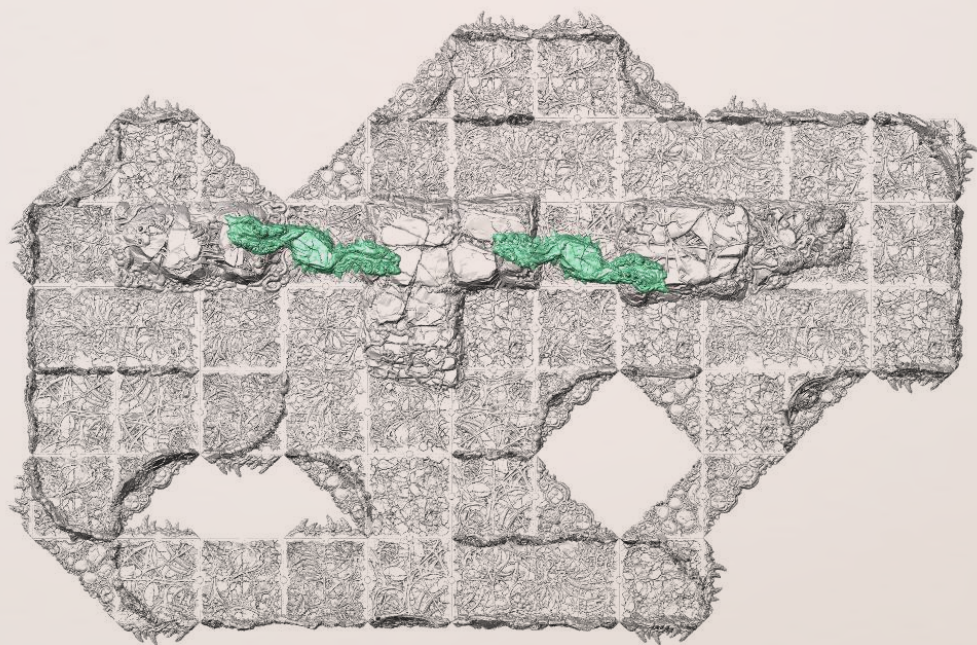
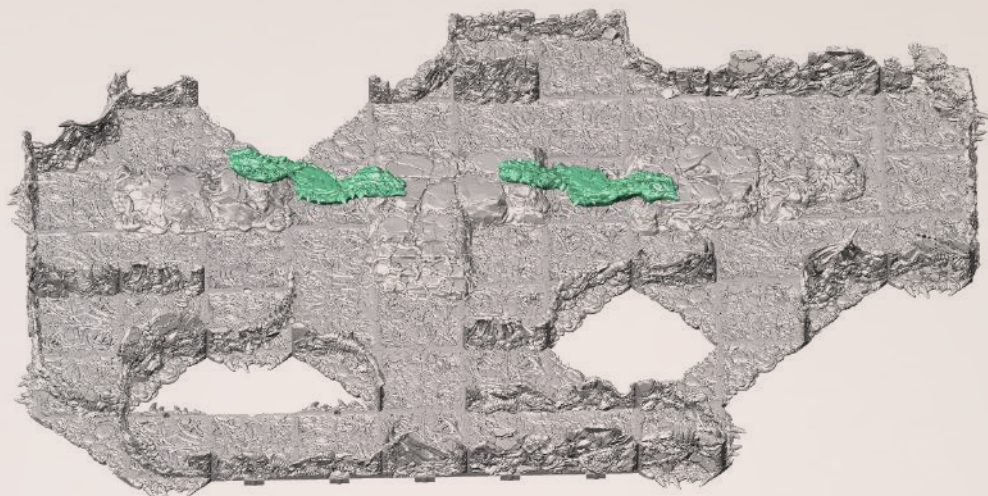






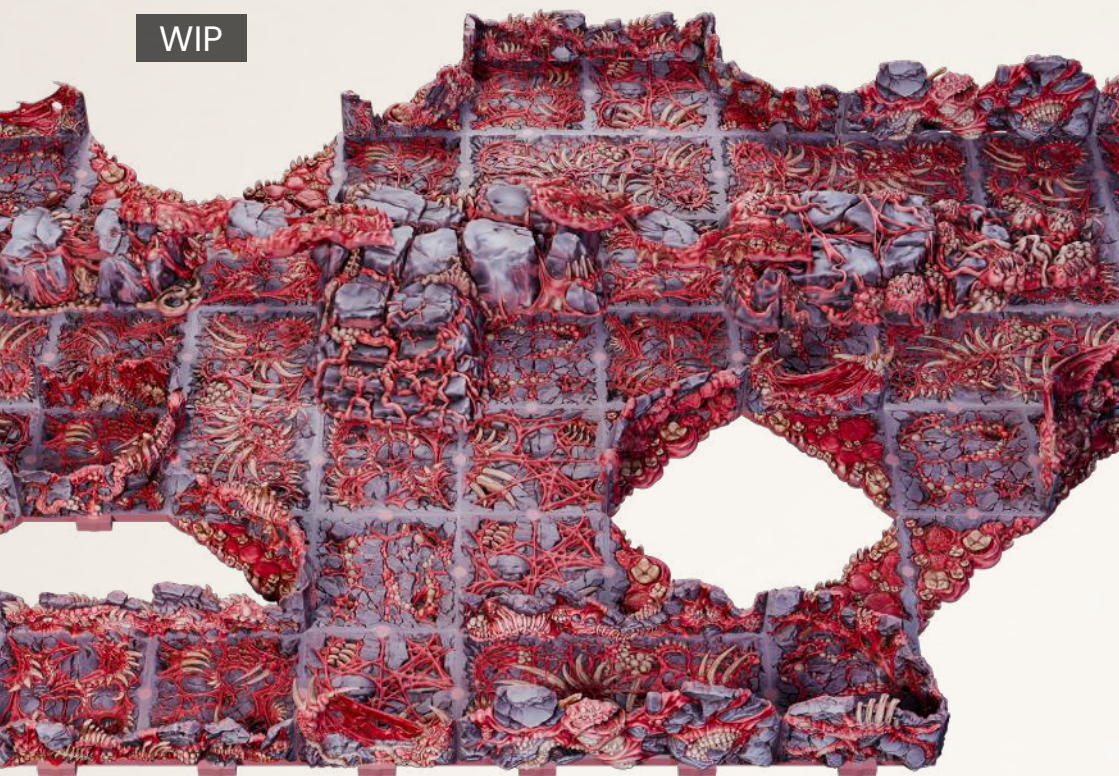








WIP



## JOIN THE PARTY



DUNGEONSANDLASERS



DUNGEONSANDLASERSOFFICIAL



DUNGEONSANDLASERS.COM



SHOP.ARCHON-STUDIO.COM

