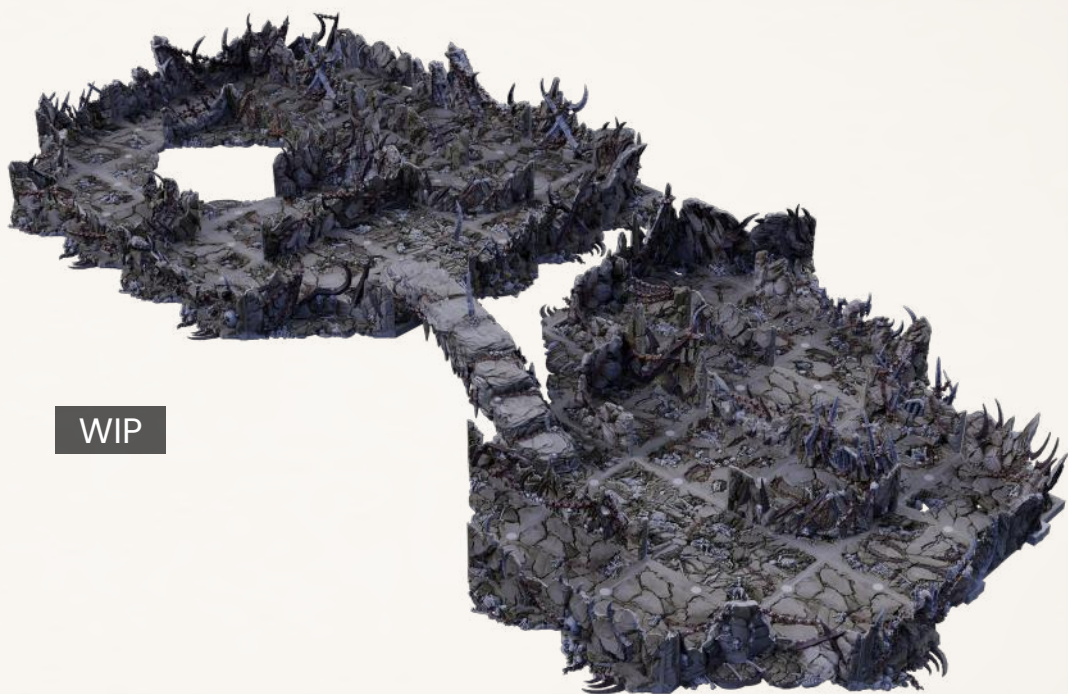


# DUNGEONS & LASERS<sup>®</sup>

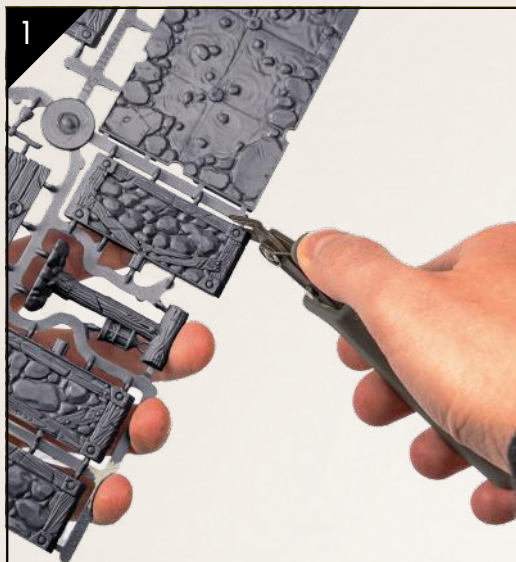


WIP

## DEMONIC CAVES CORE SET

MANUAL

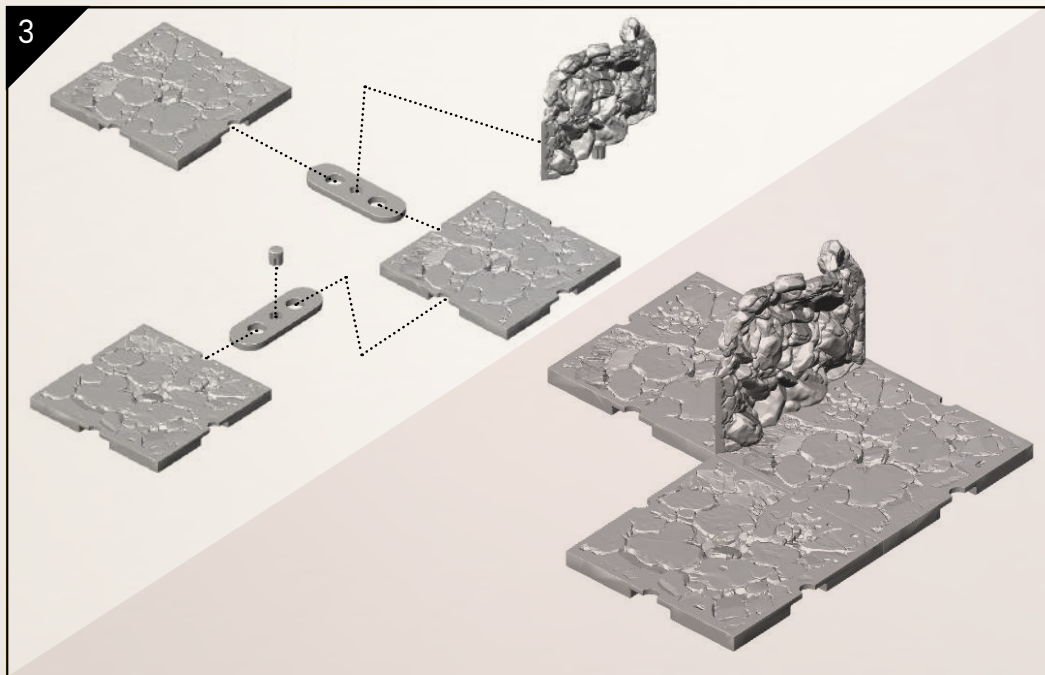
# HOW TO BUILD A ROOM?



1  
Cut the elements from the sprue with a pair of clippers.

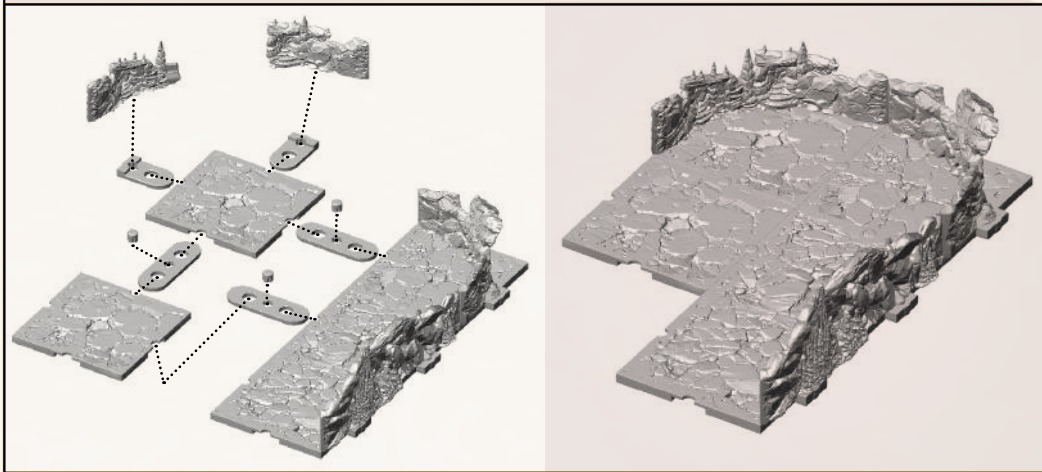
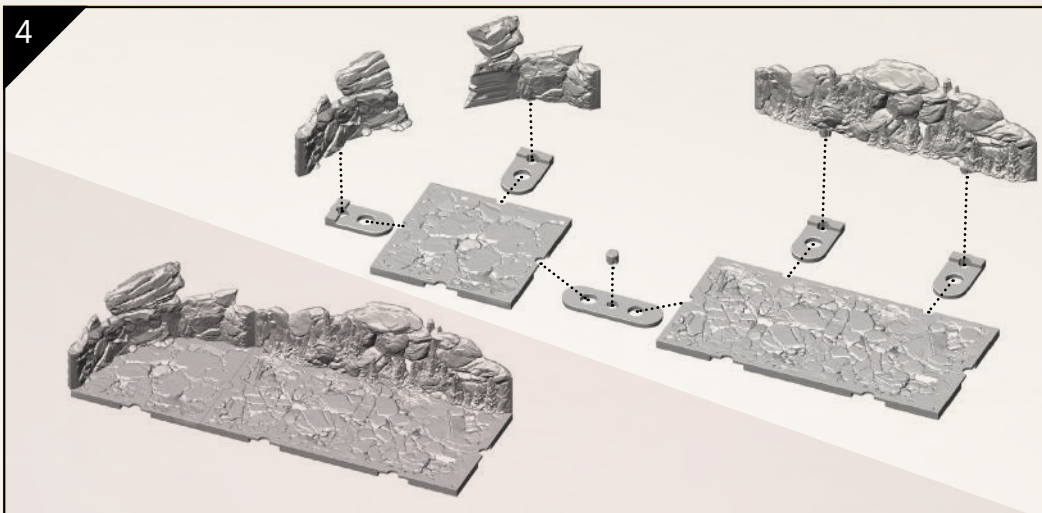


2  
Remove any leftovers with a scalpel.



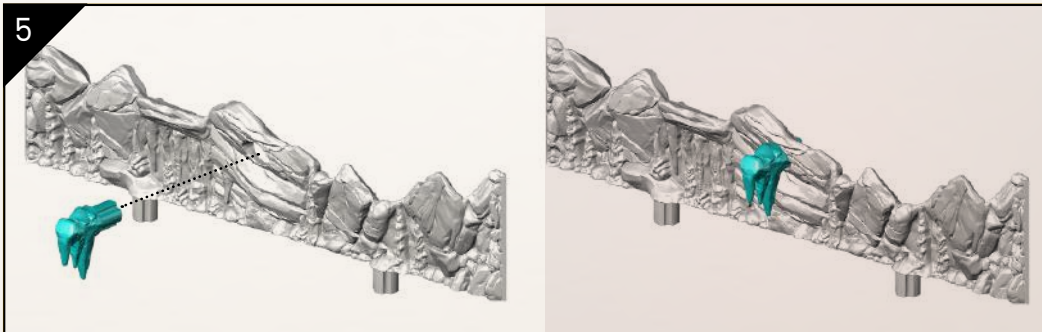
3  
Connect any floors and walls using the provided clips.

4



Curved walls require you to first join both sides of the wall before inserting it into the clip hole.

5

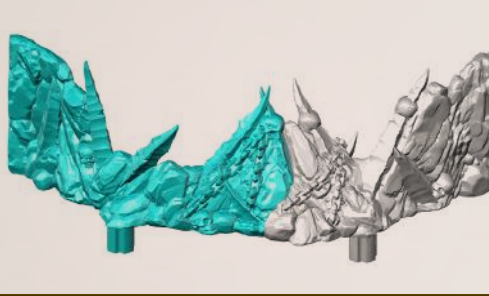
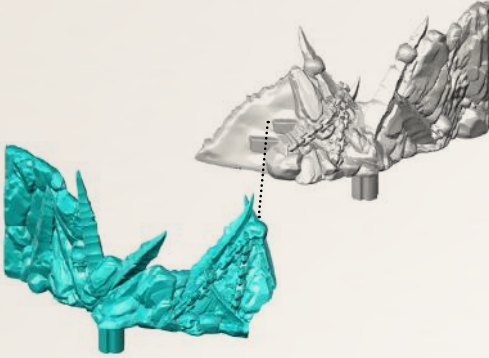


Place your desired props in the holes on the walls and floors.

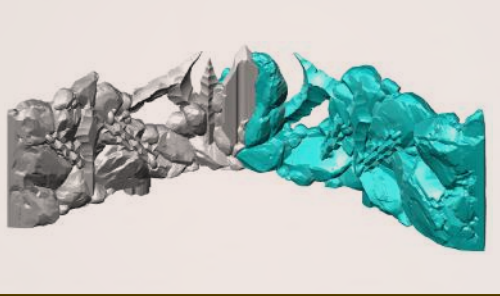
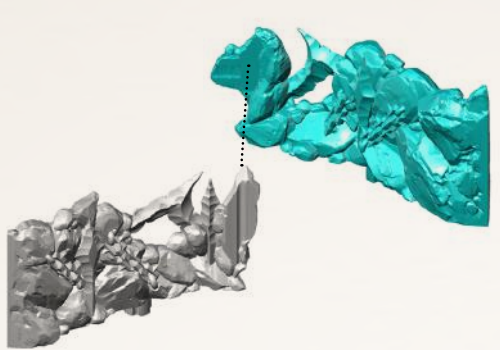


# COMPONENTS

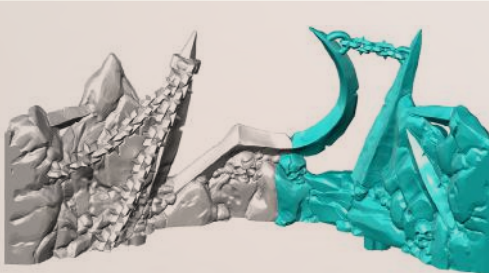
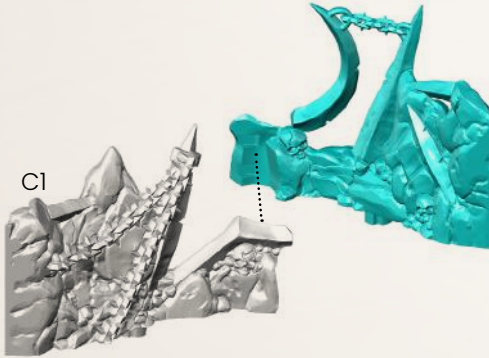
Curved Half Wall 1



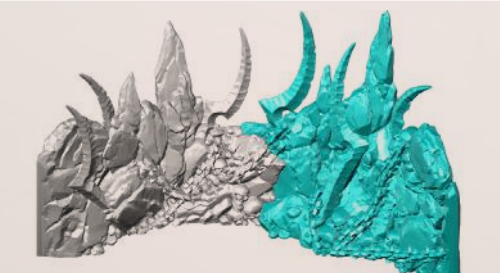
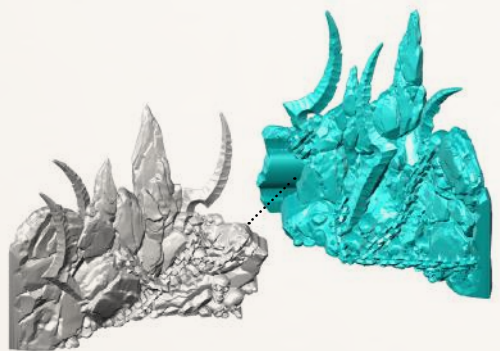
Curved Half Wall 2



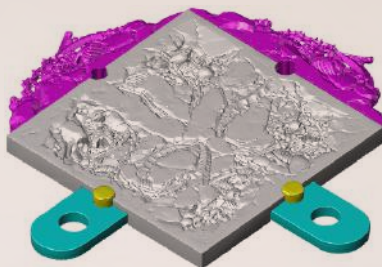
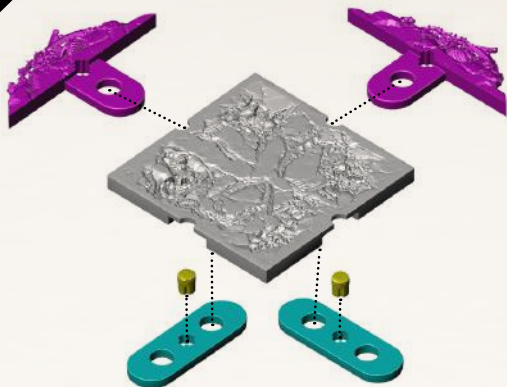
Curved Half Wall 4



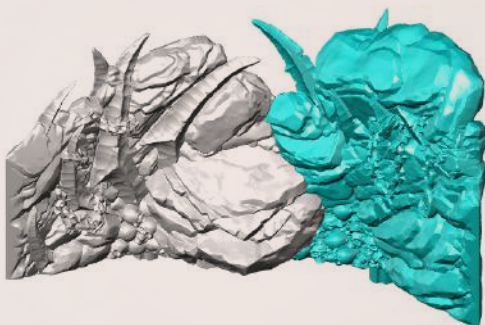
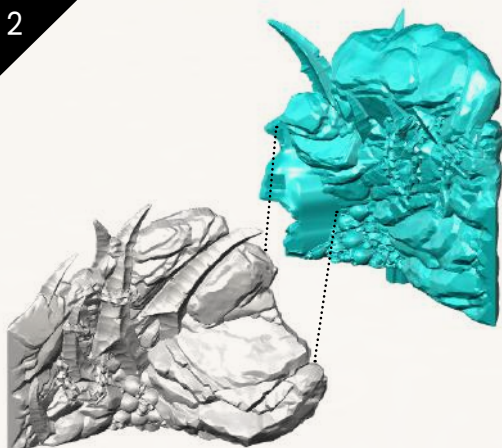
Curved Wall 1



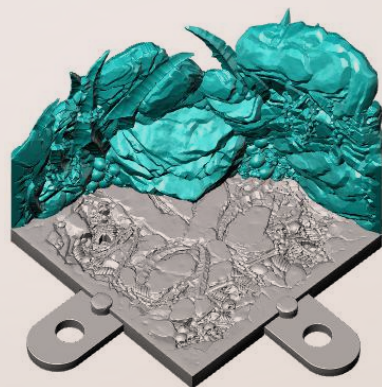
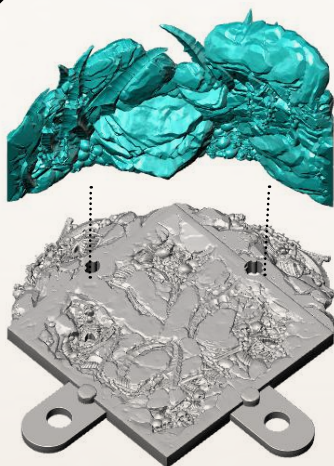
1



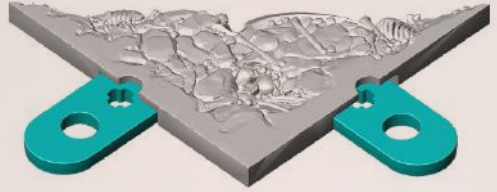
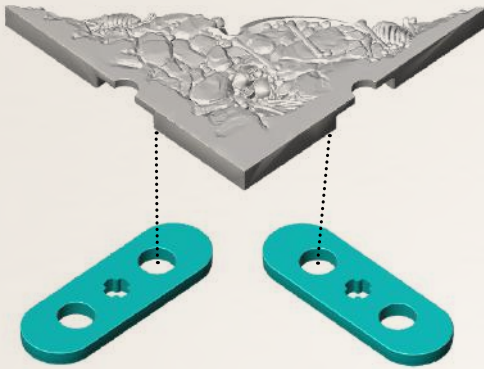
2



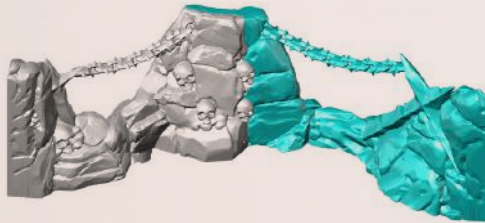
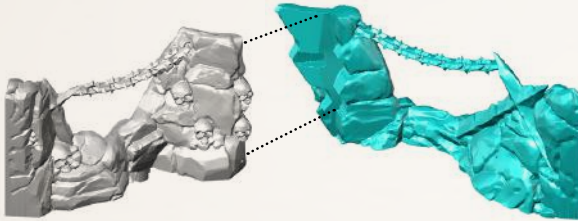
3



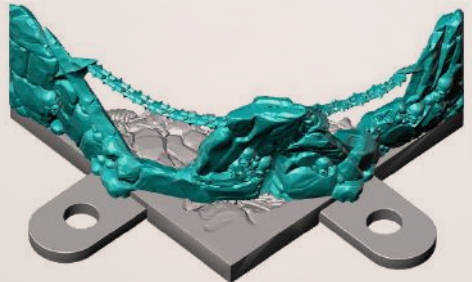
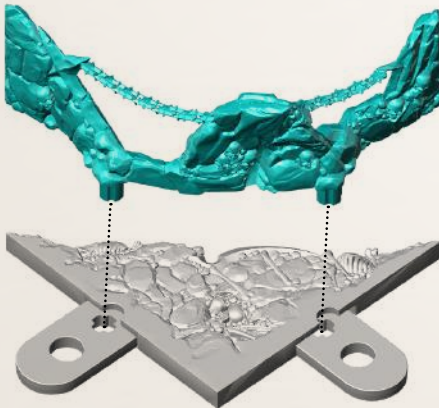
1



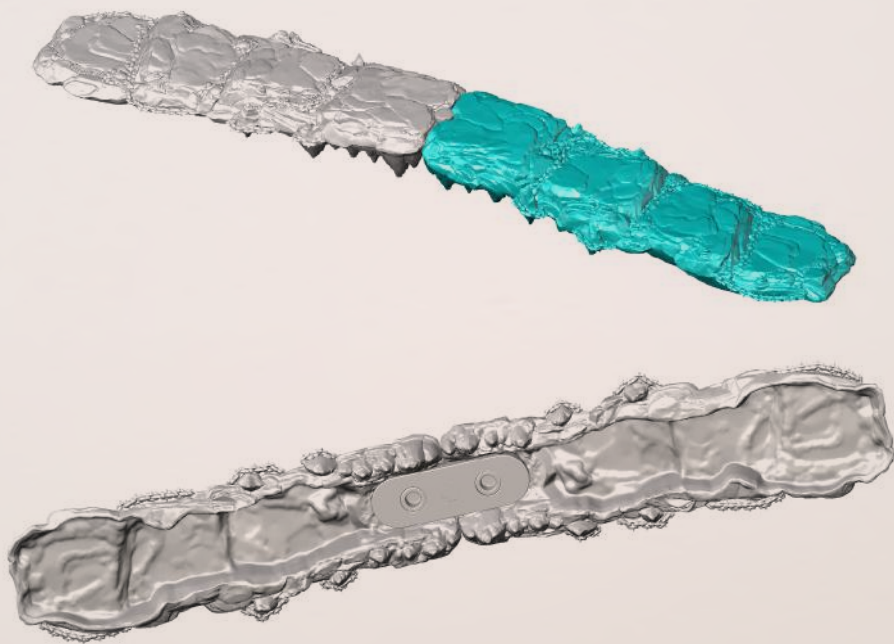
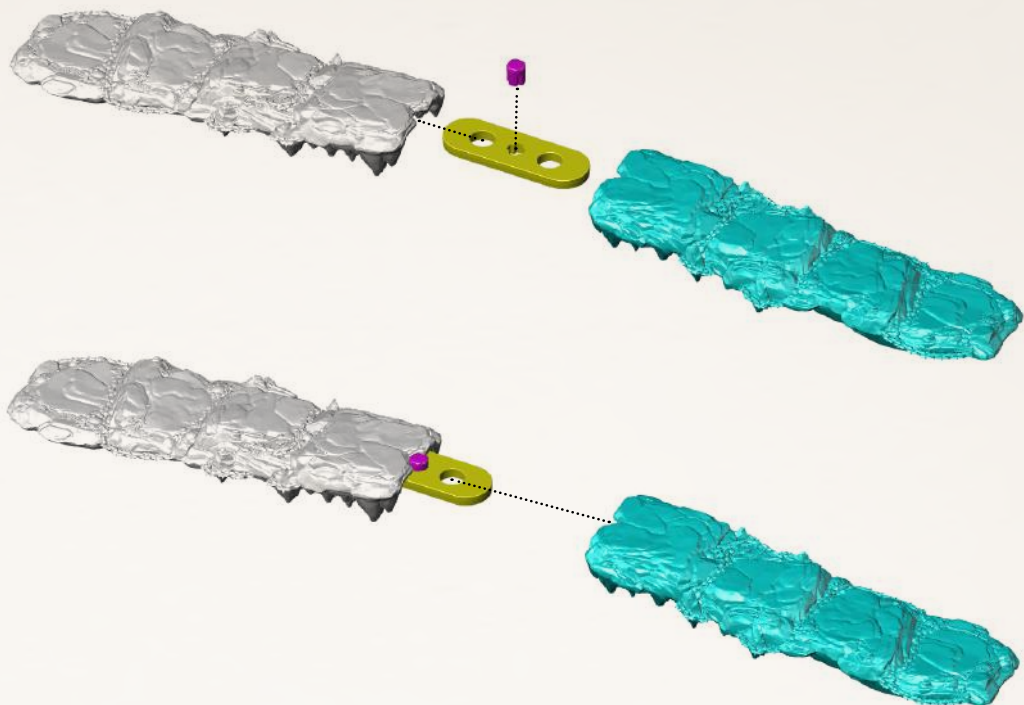
2



3

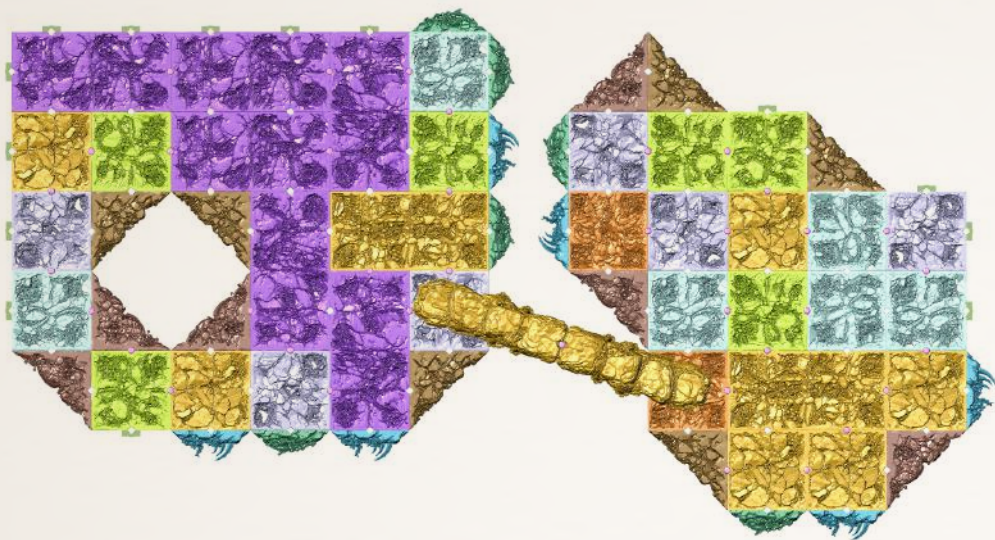






# EXAMPLE OF ASSEMBLY

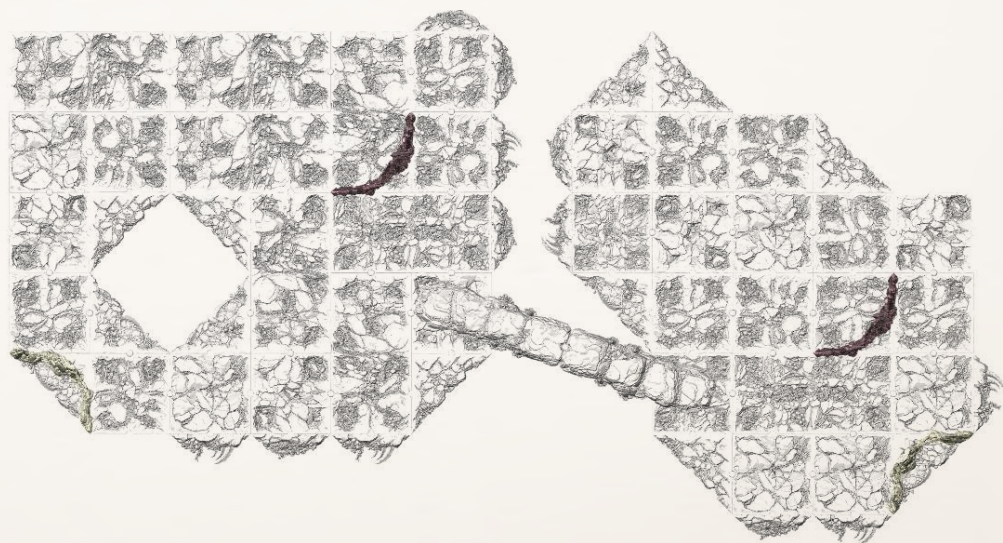
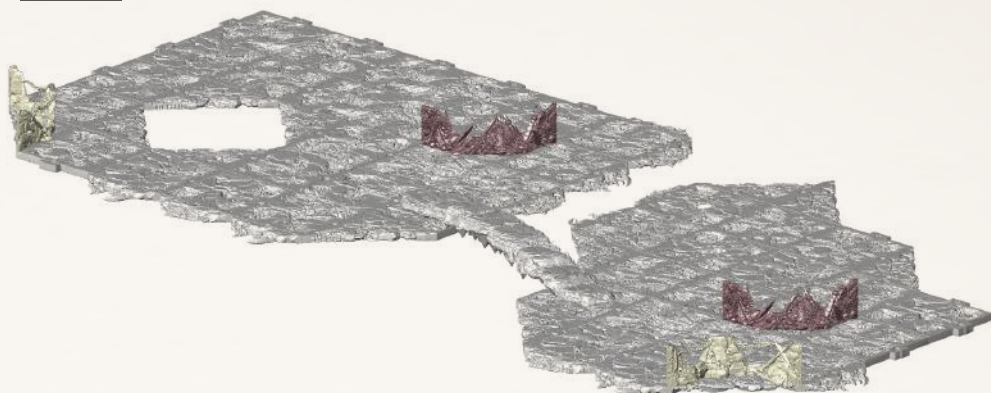
1





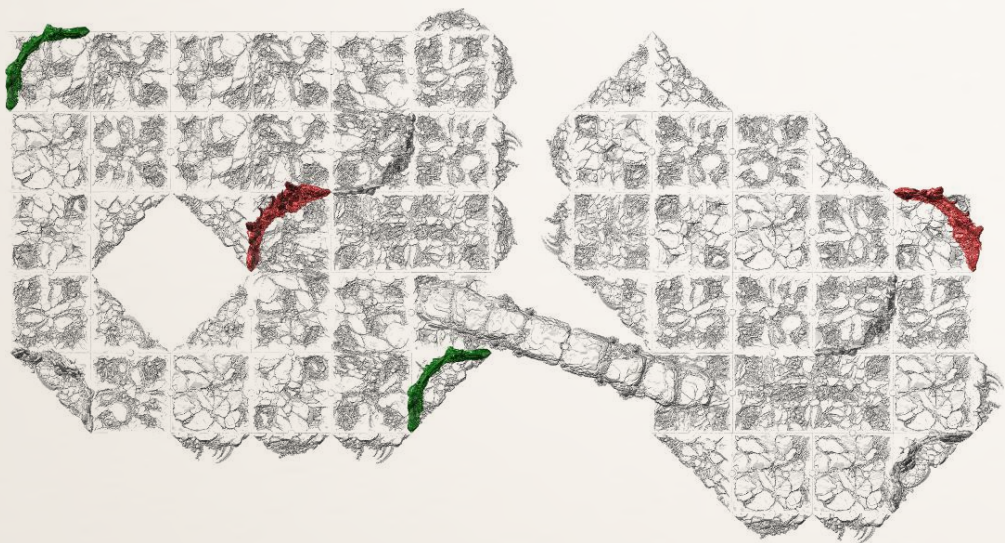
CURVED  
HALF  
WALL 1

CURVED  
HALF  
WALL 3



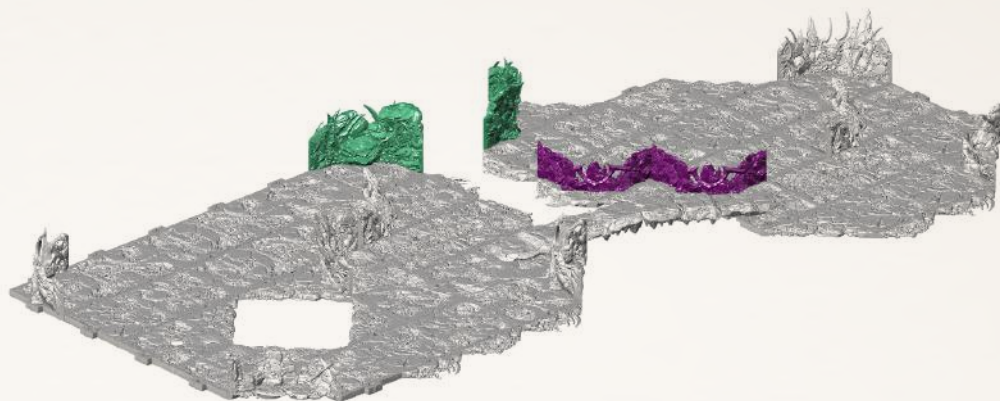
CURVED  
HALF  
WALL 4

CURVED  
WALL 1

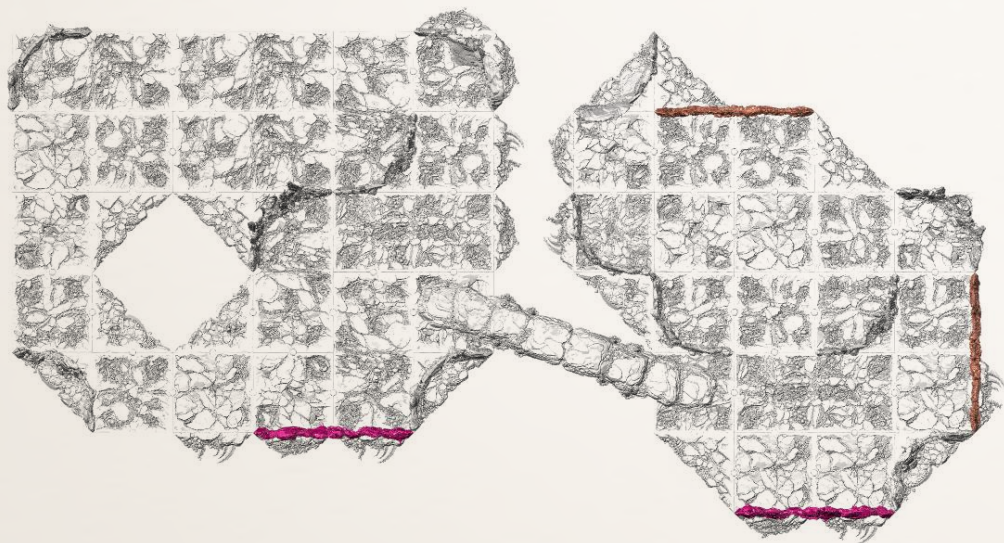


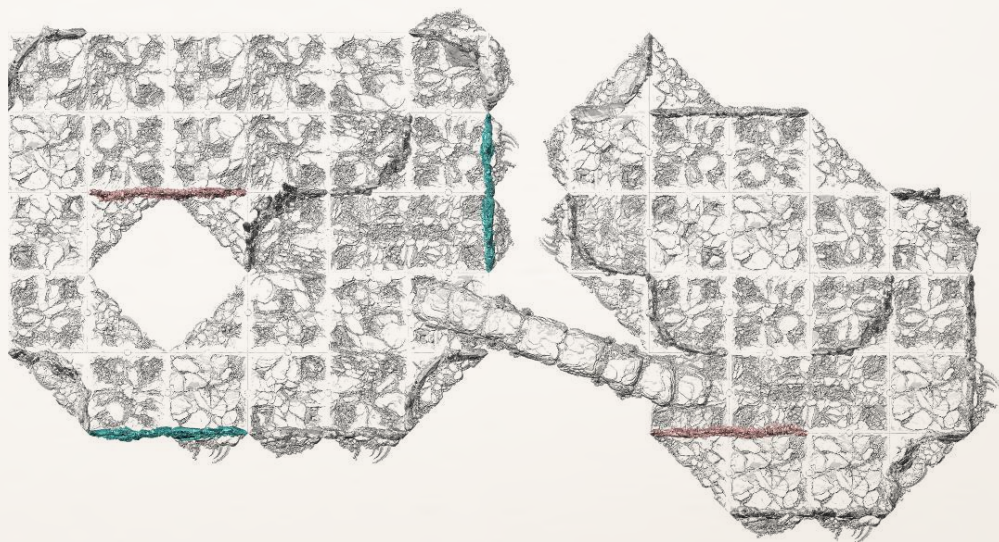
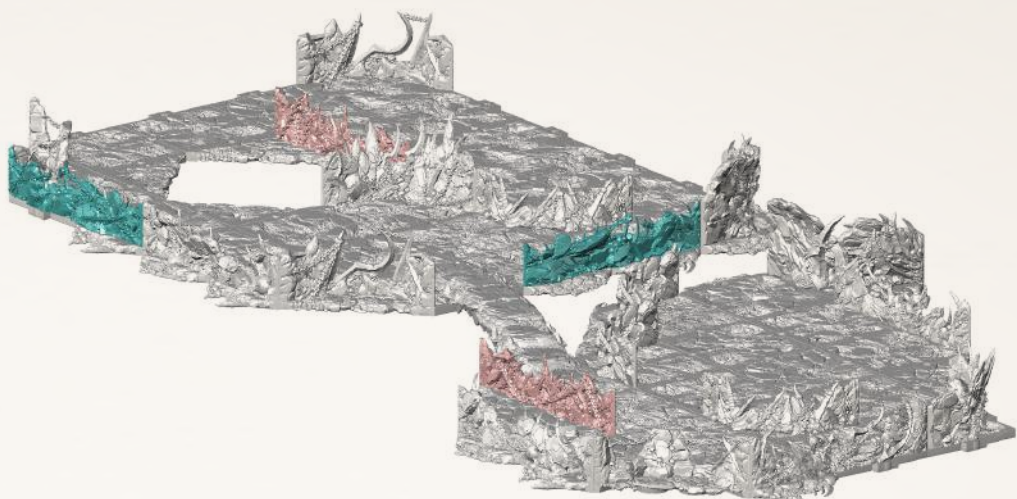
CURVED  
HALF  
WALL 2

CURVED  
WALL 2

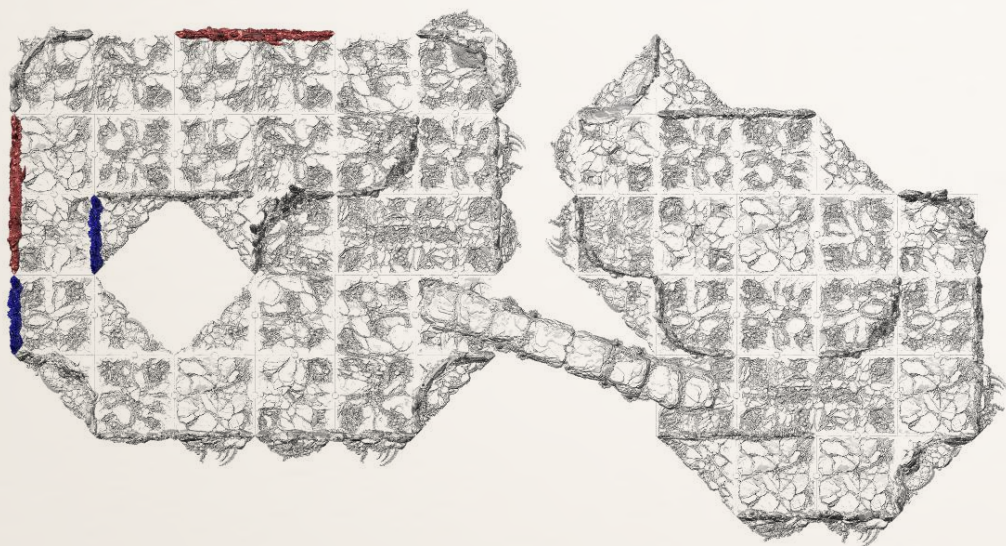
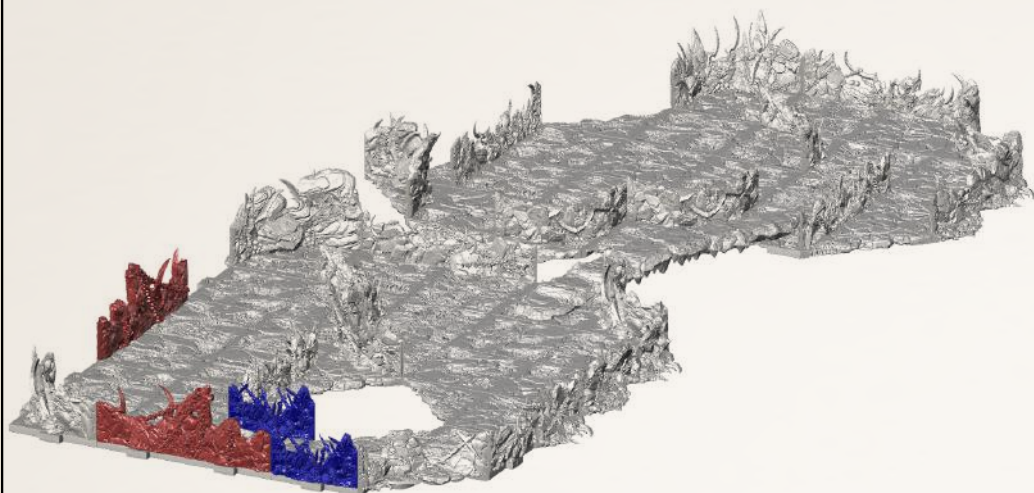




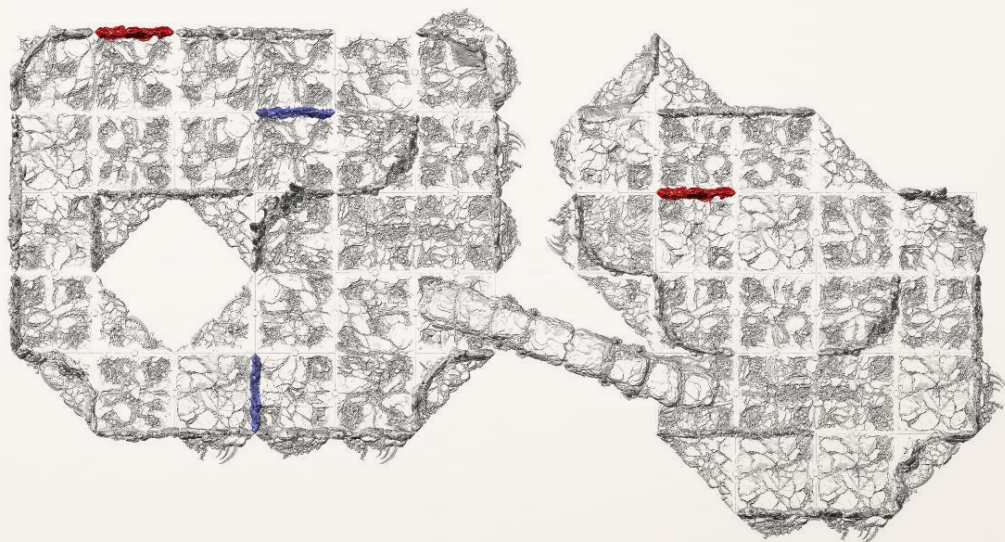
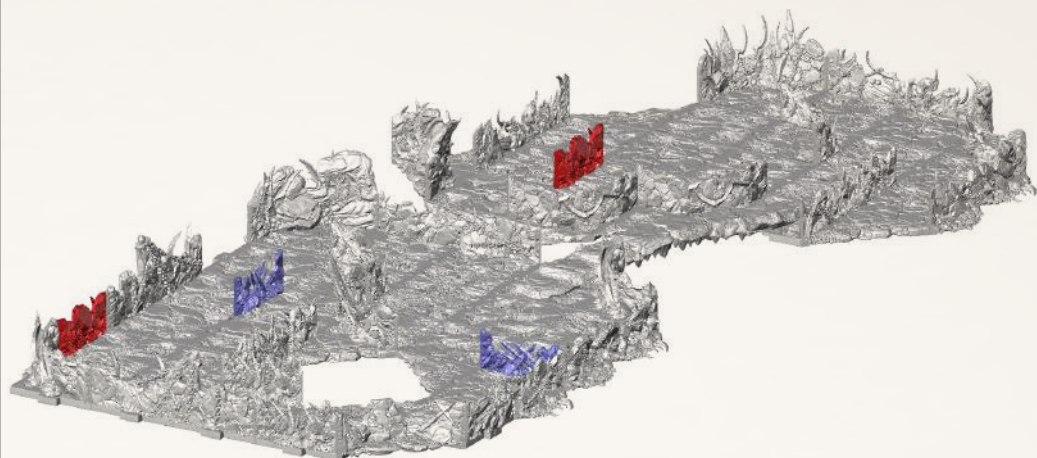


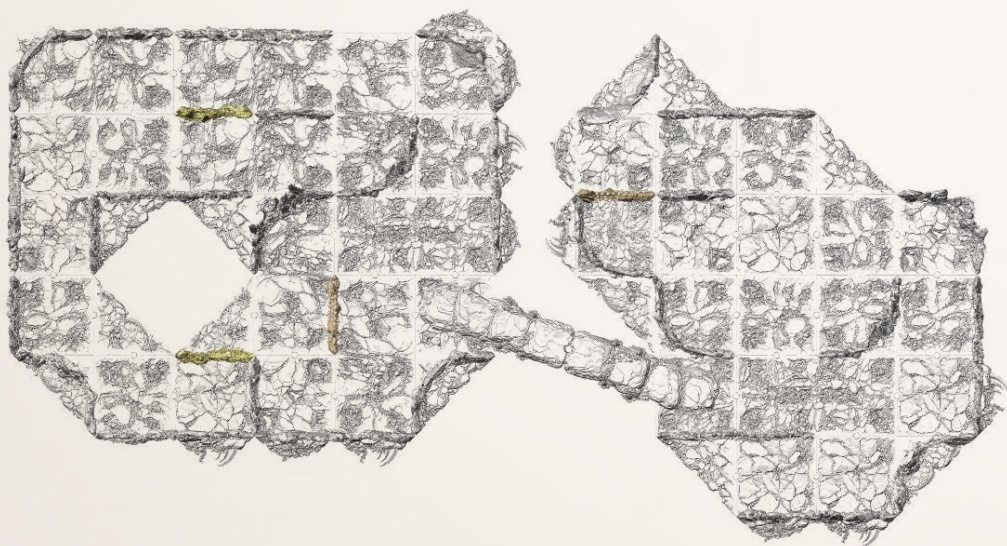
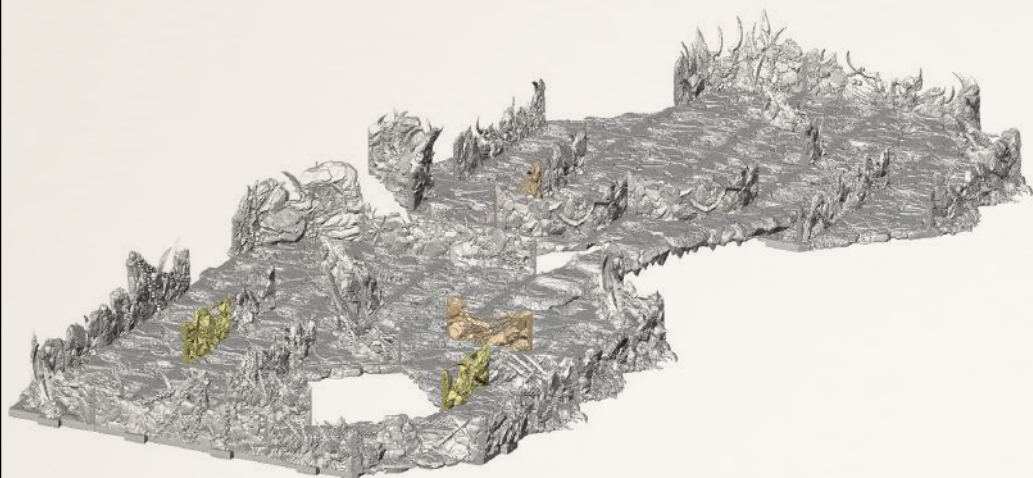




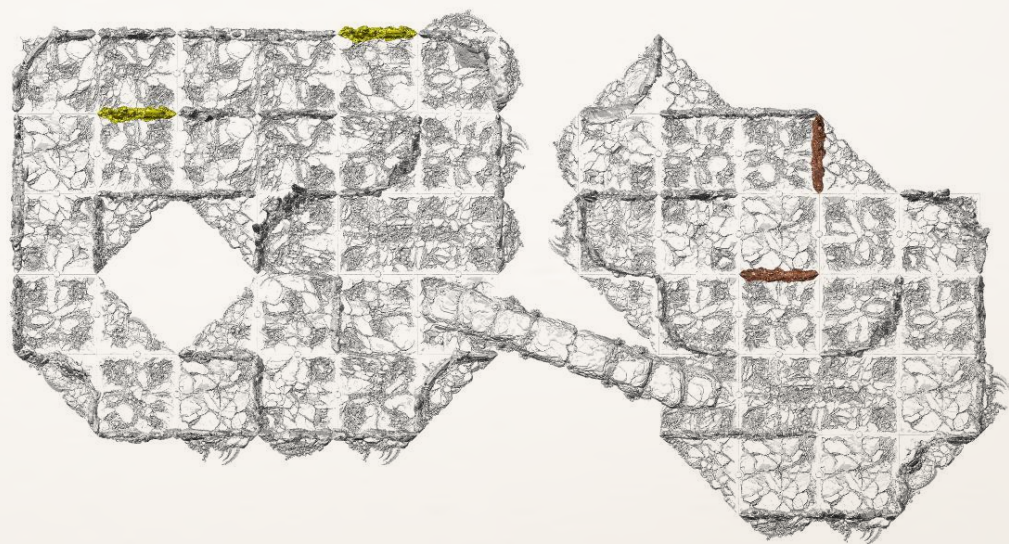
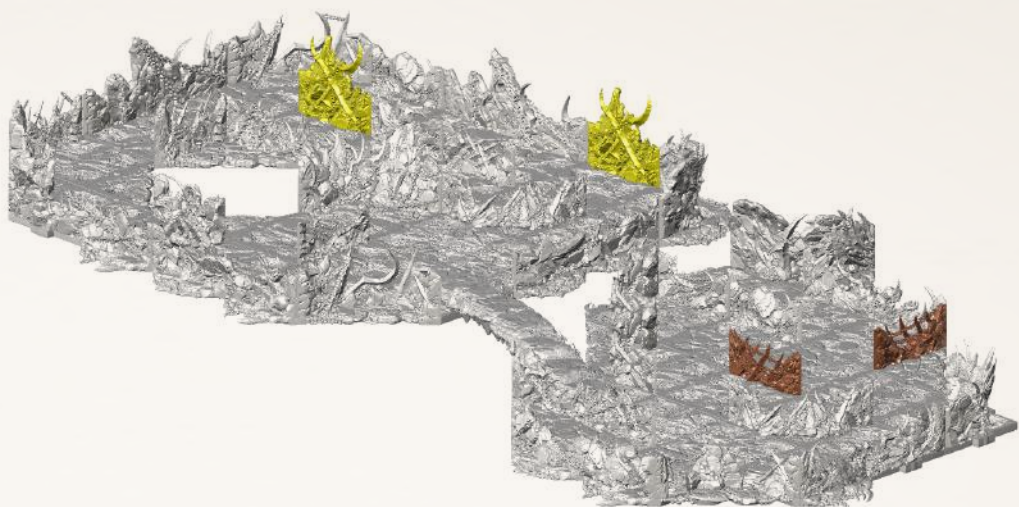




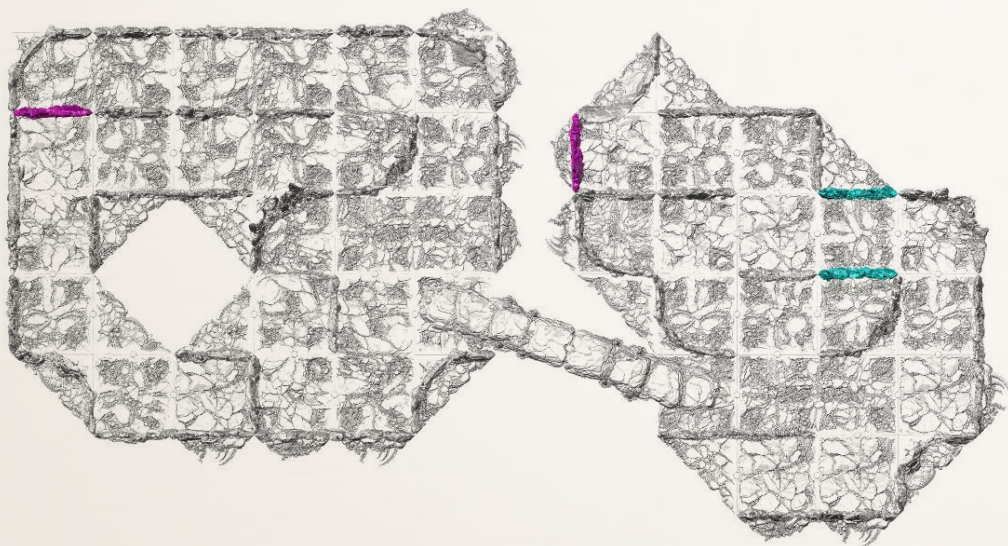


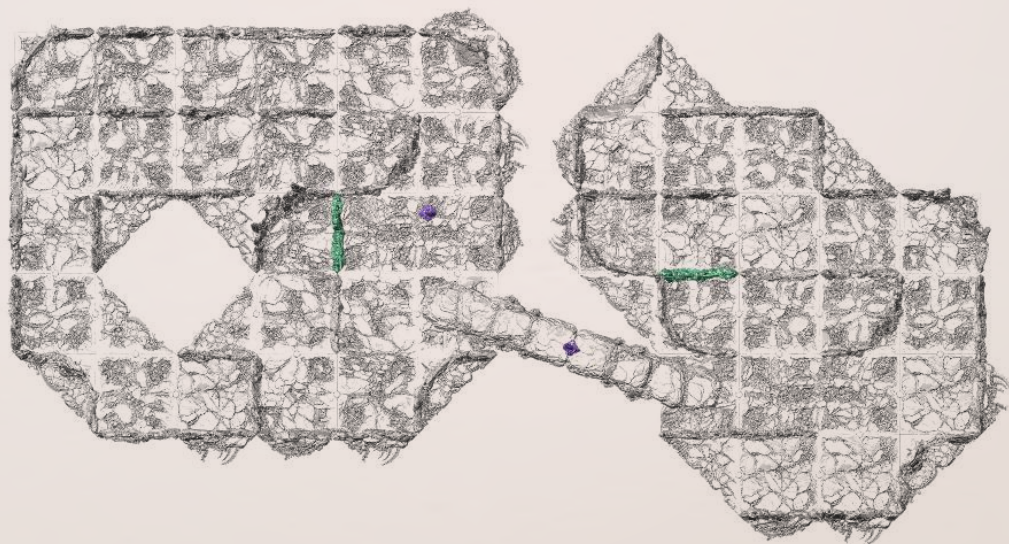
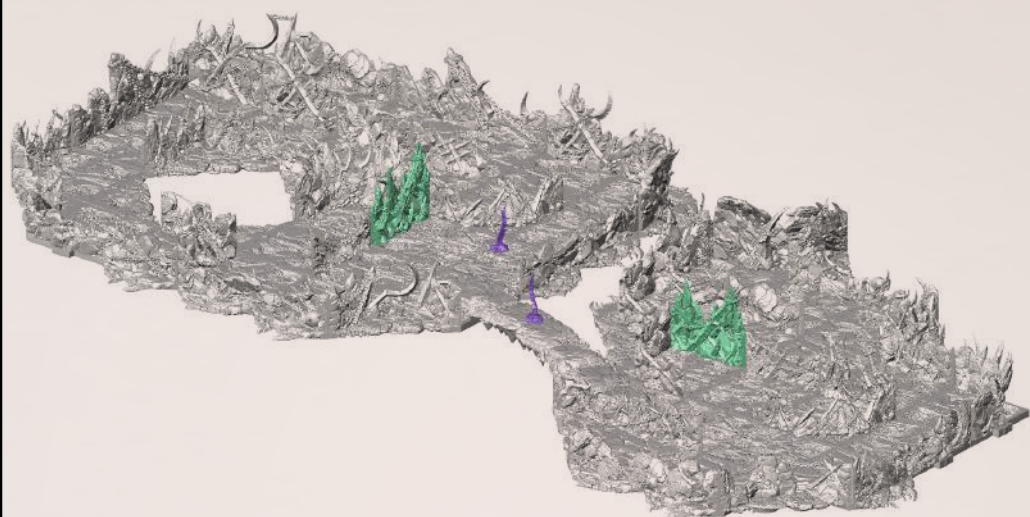
















WIP

## JOIN THE PARTY



DUNGEONSANDLASERS



DUNGEONSANDLASERSOFFICIAL



DUNGEONSANDLASERS.COM



SHOP.ARCHON-STUDIO.COM

