



# OF SEA AND THUNDER

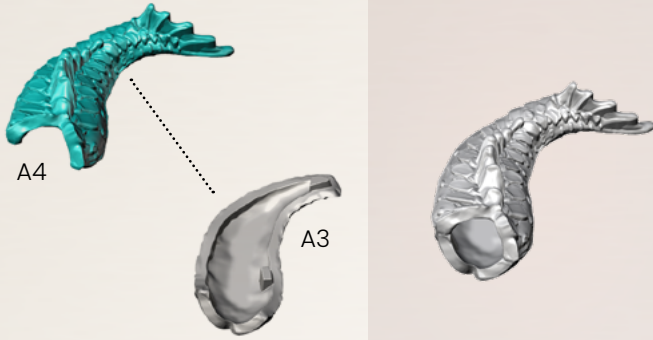
MANUAL

# ENCURA SOLDIERS

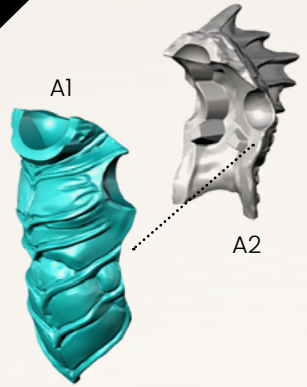
SPRUE: Add On 1 - 1

Encura Soldiers: pose A

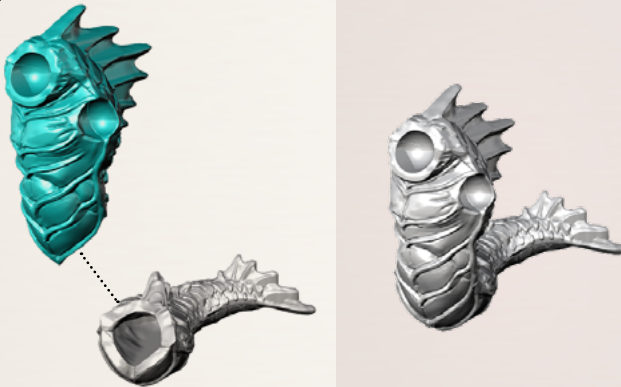
1



2



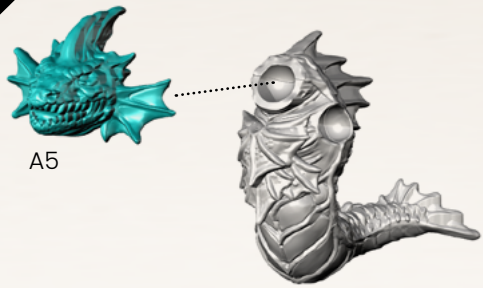
3



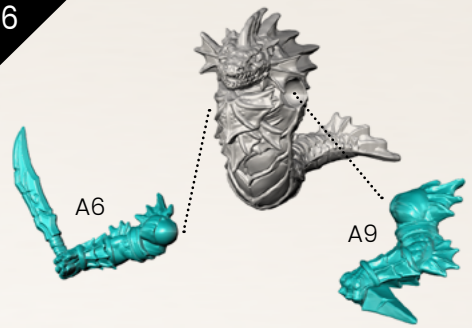
4



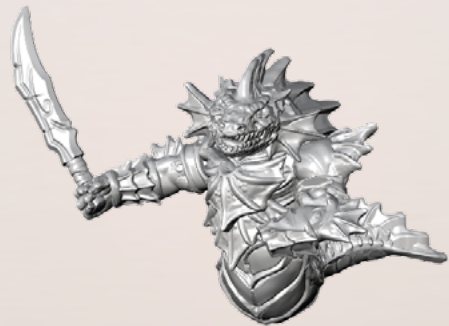
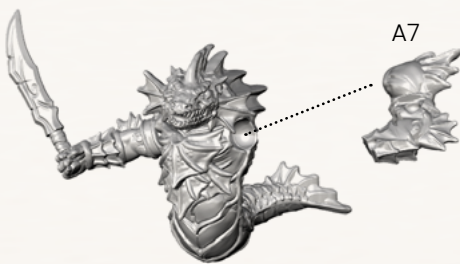
5



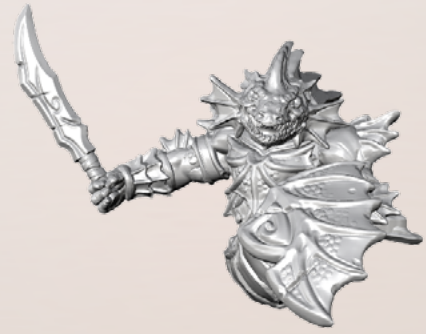
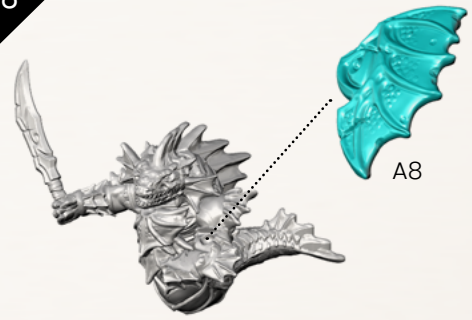
6



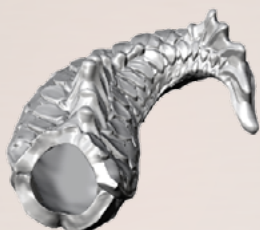
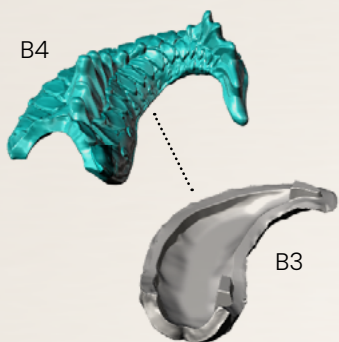
7



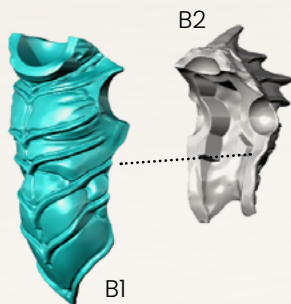
8



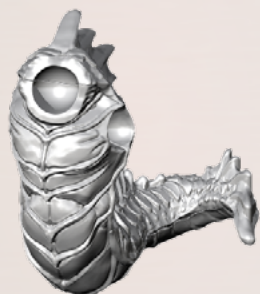
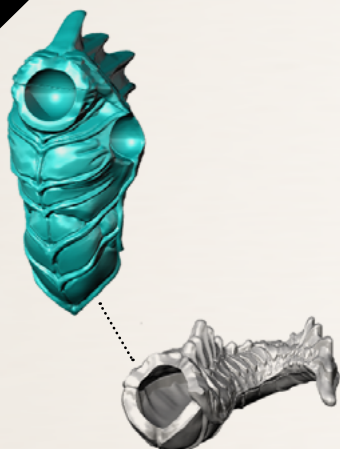
1



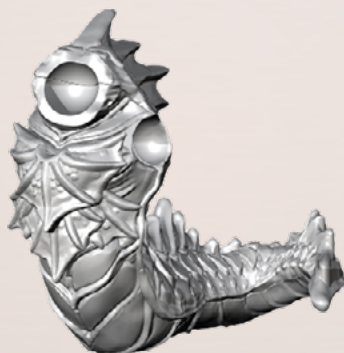
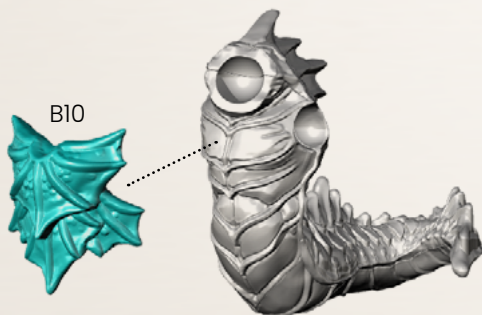
2



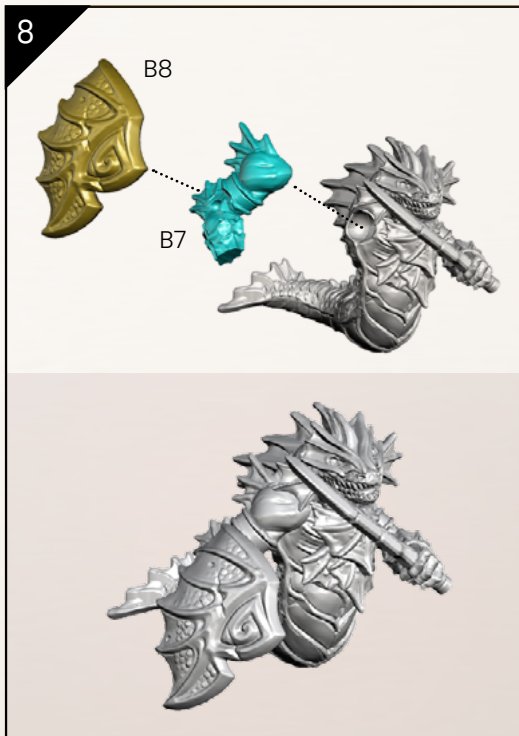
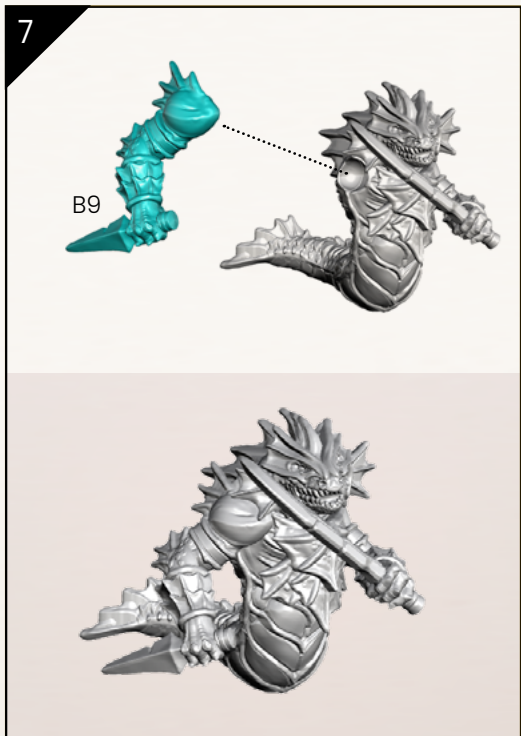
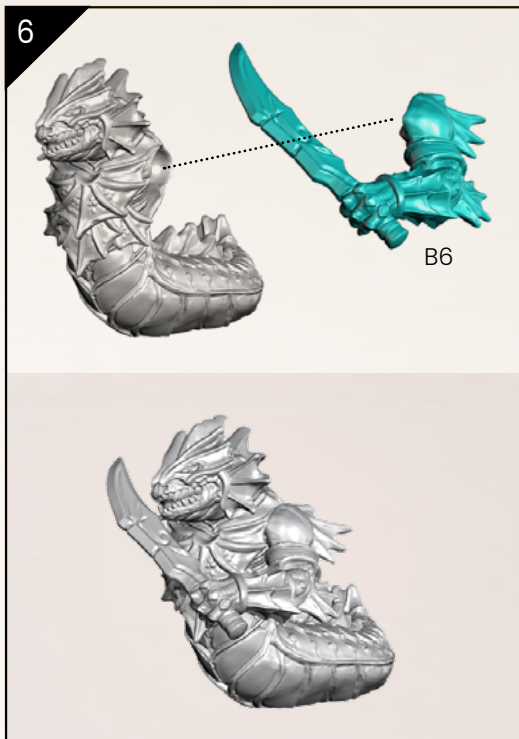
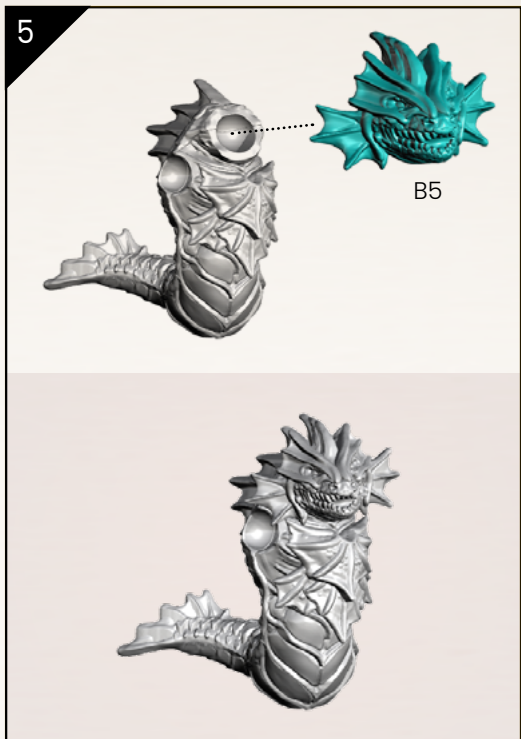
3



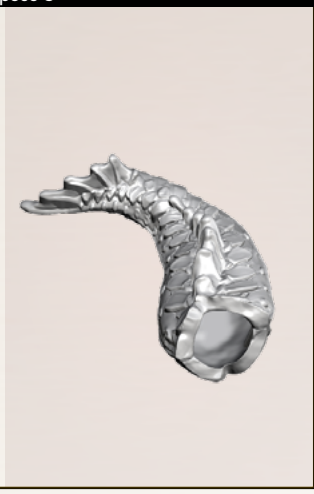
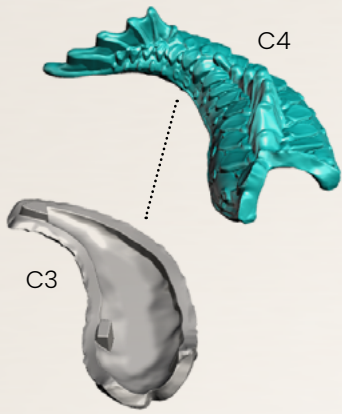
4



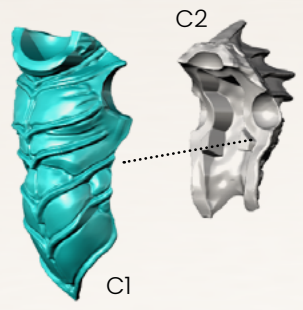




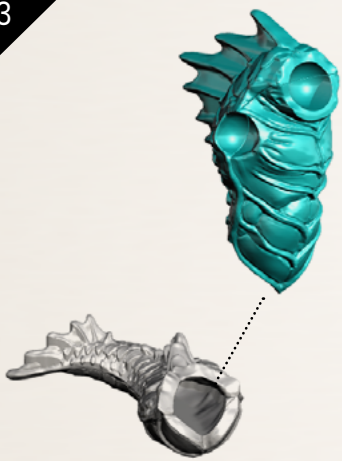
1



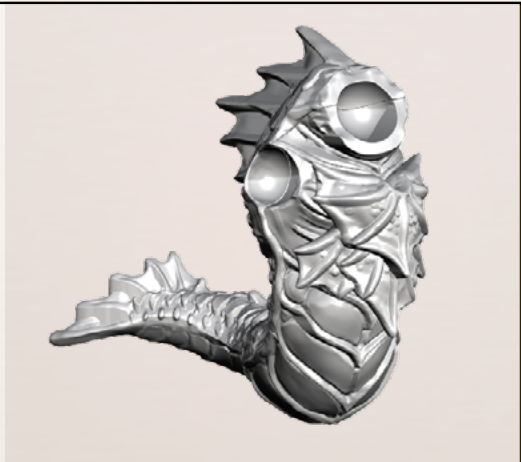
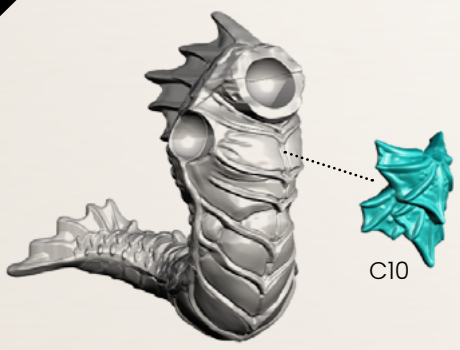
2

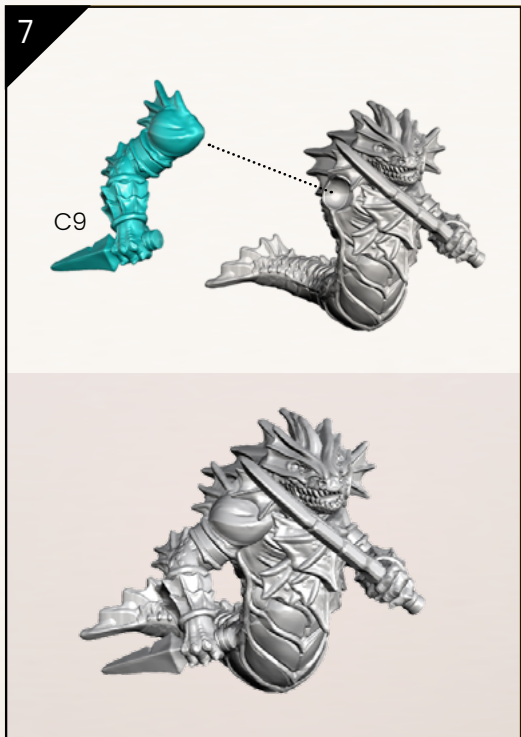
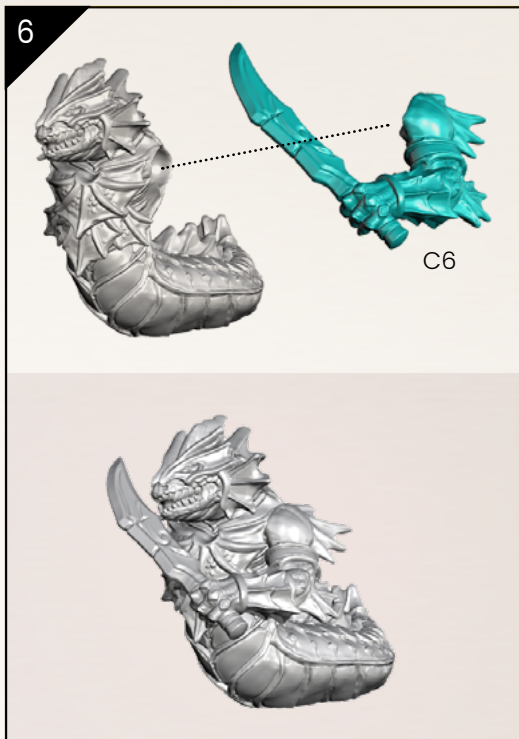
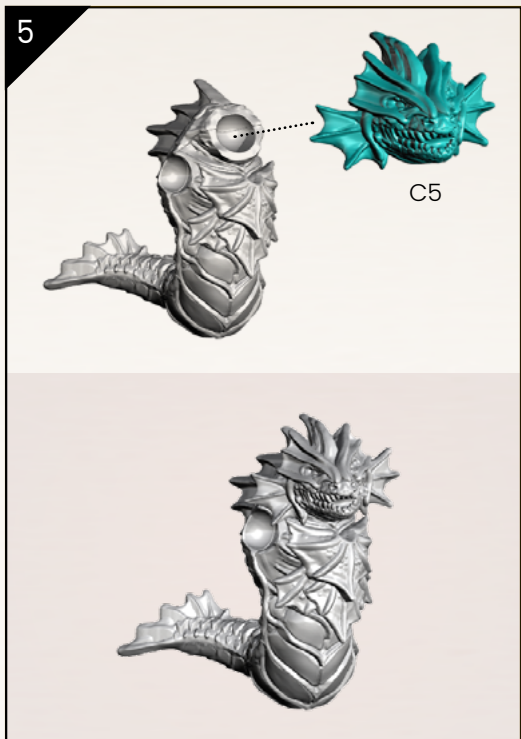


3



4



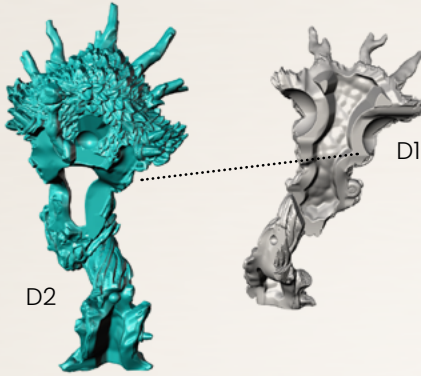


# MINOR RASHER GOLEM

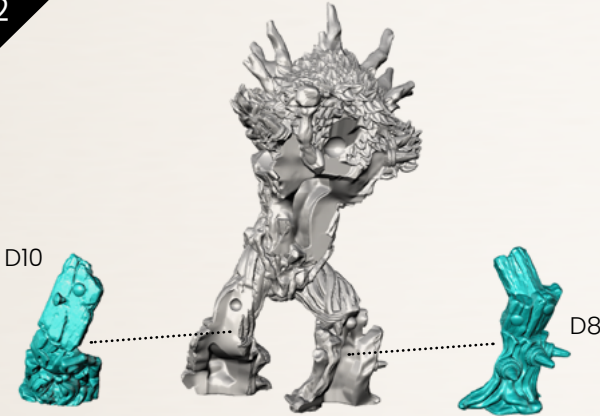
SPRUE: Add On 1 - 1

Minor Rasher Golem: base

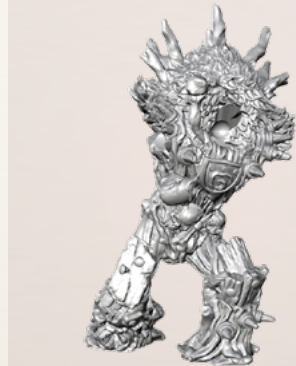
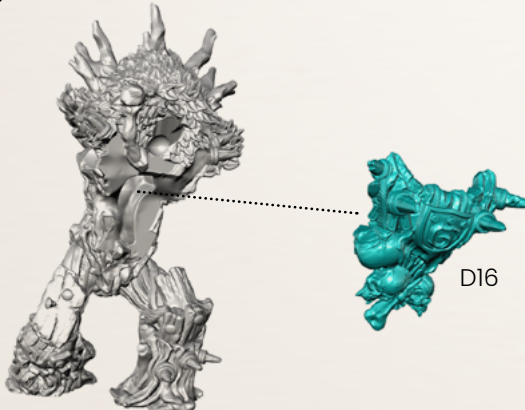
1



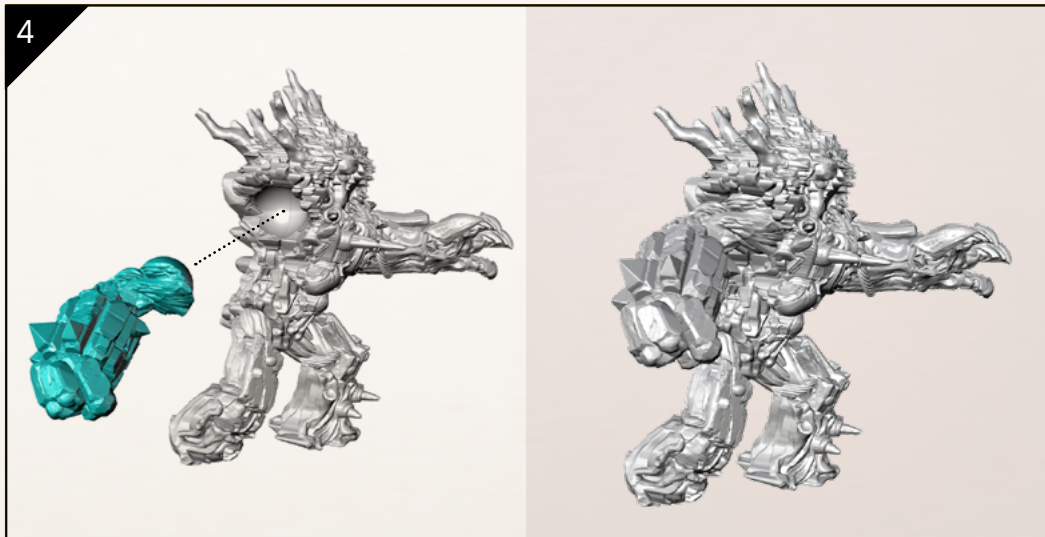
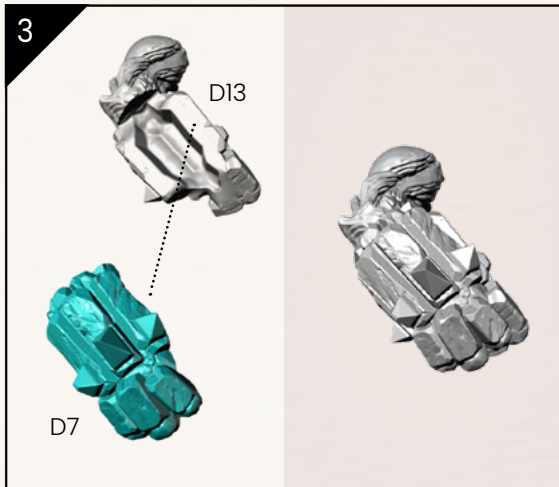
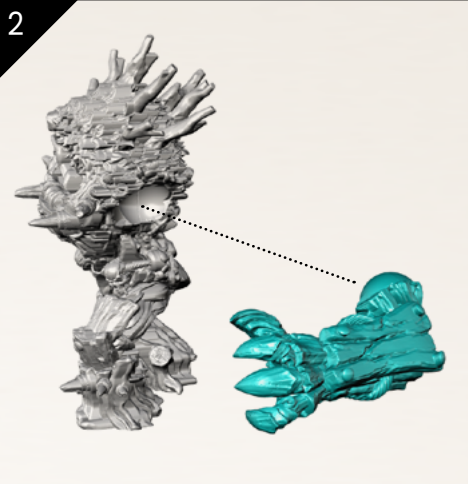
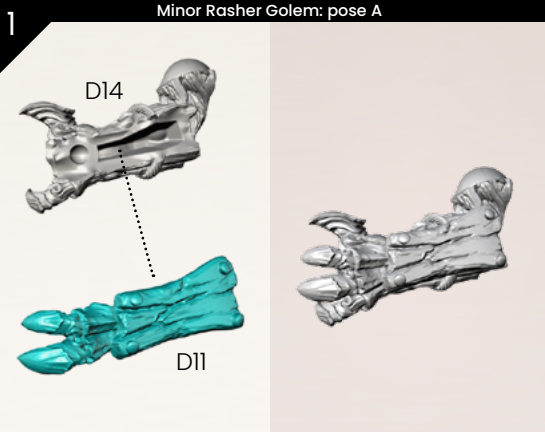
2



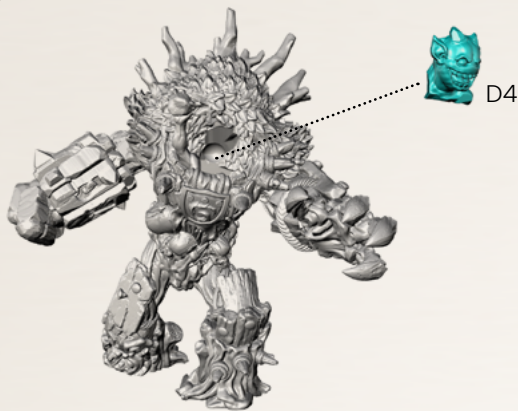
3





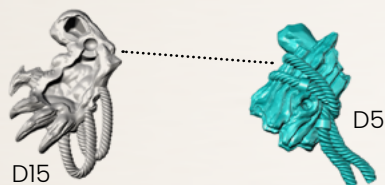


5

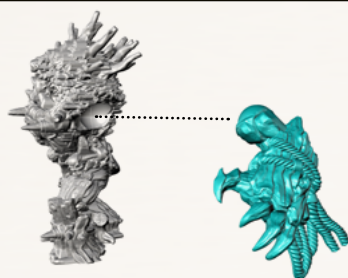


1

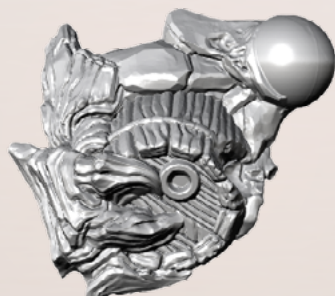
Minor Rasher Golem: pose B



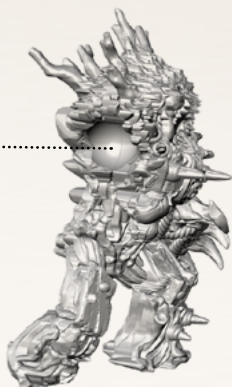
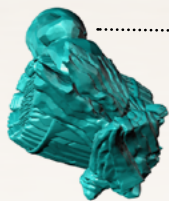
2



3



4



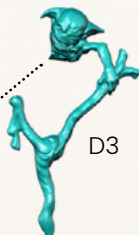
5

D6



6

D3

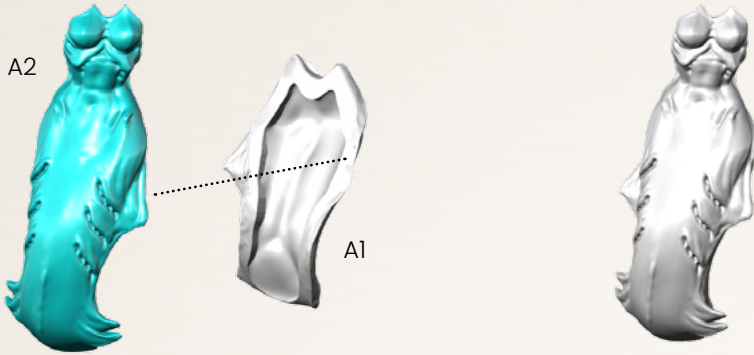


# SEA HARPIES

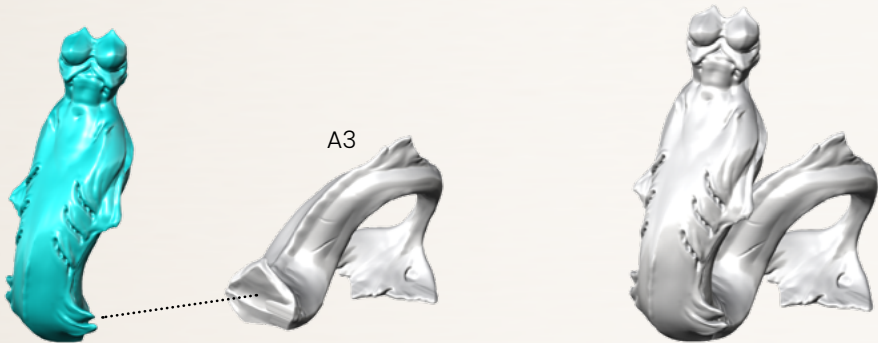
SPRUE: Add On 1 - 3

Sea Harpies: base

1

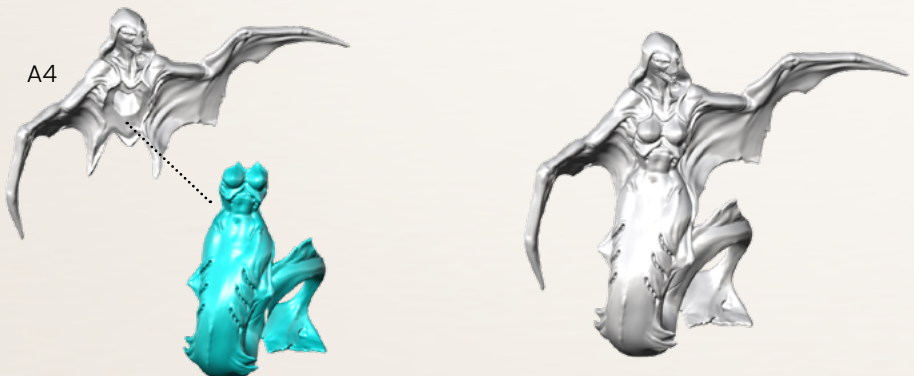


2



Sea Harpies: pose 1

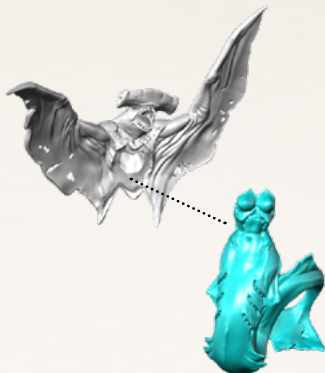
1





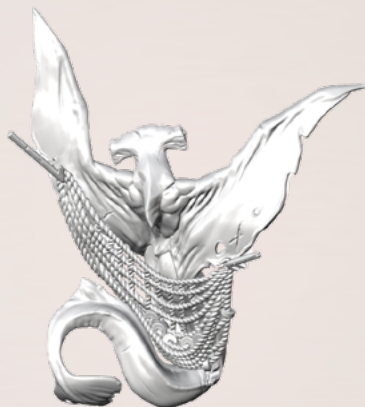
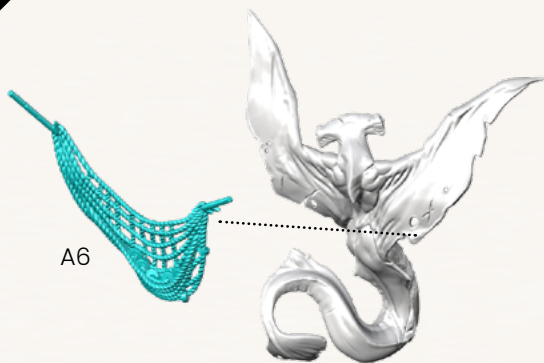
1

A5



2

A6

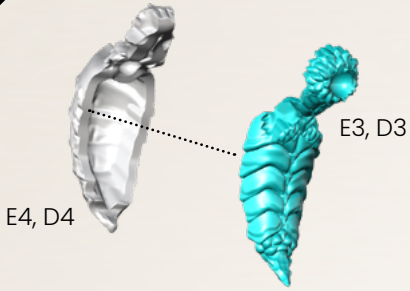


# ROCK BEES

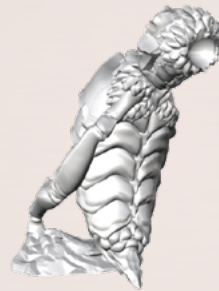
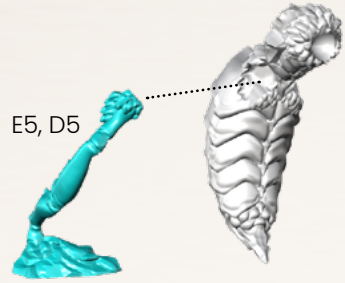
SPRUE: Add On 1 - 3

1

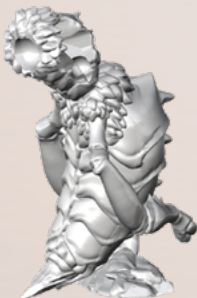
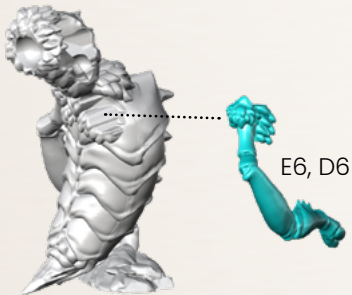
Rock Bees: base



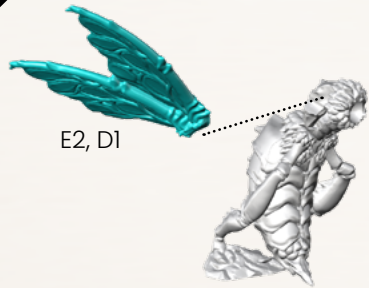
2



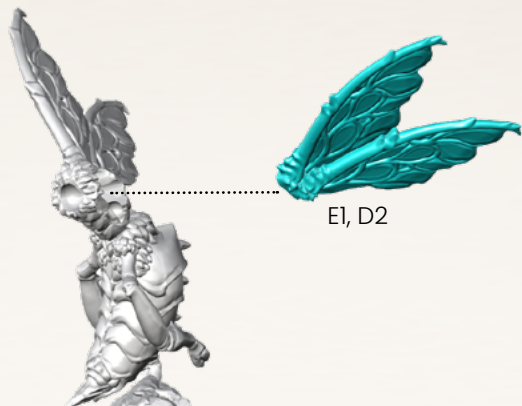
3



4

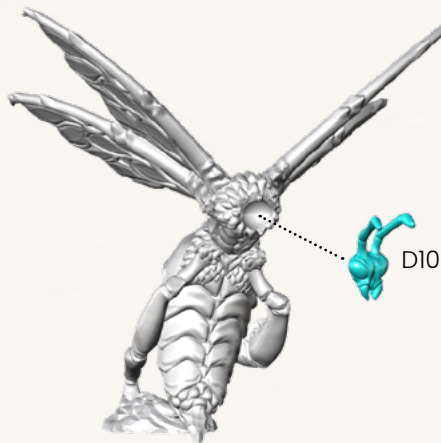


5



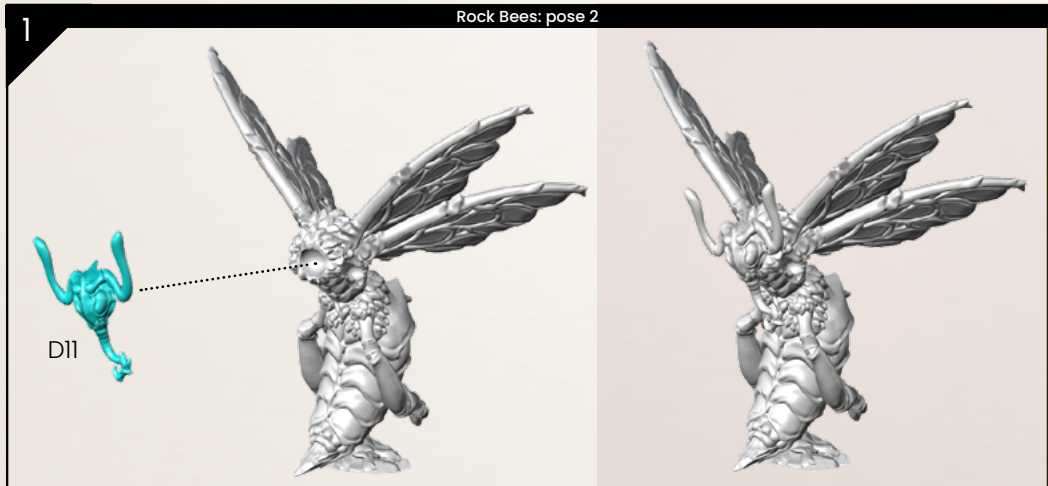
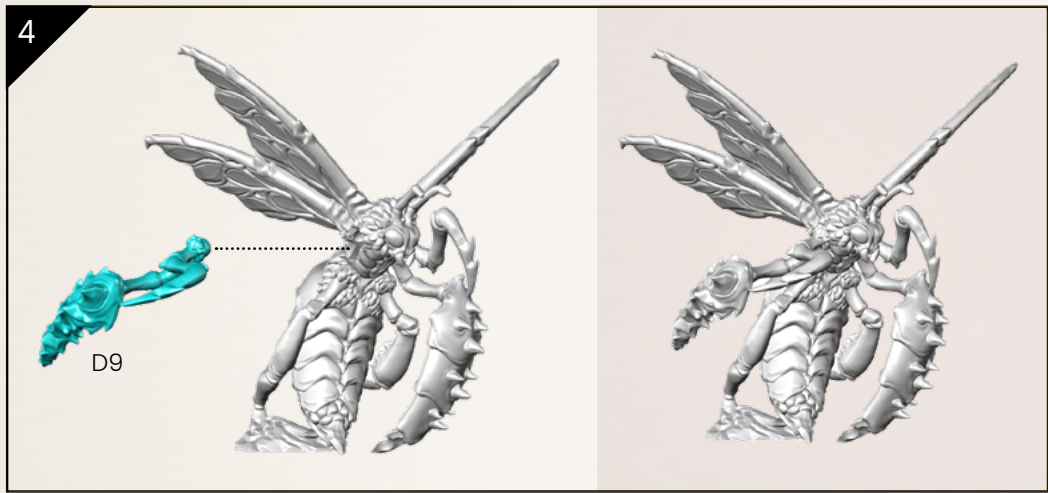
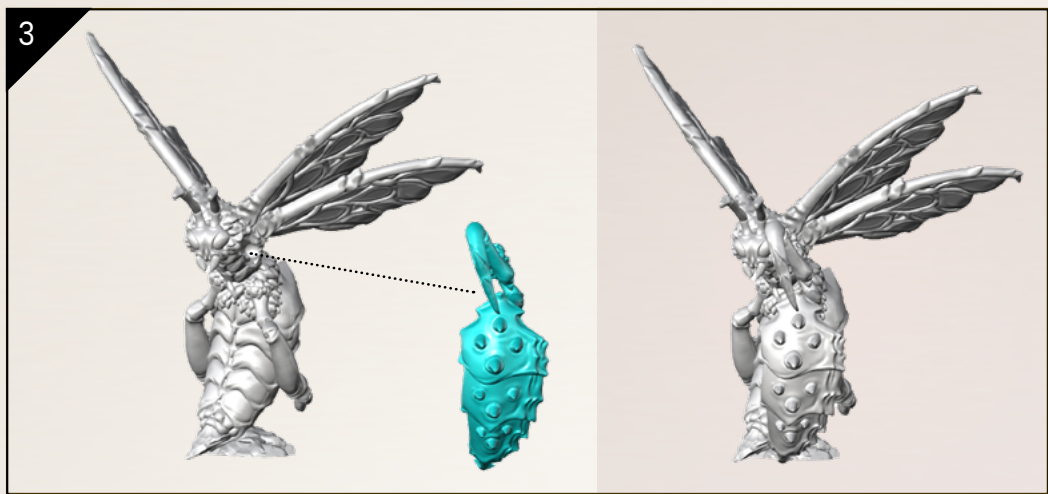
Rock Bees: pose 1

1



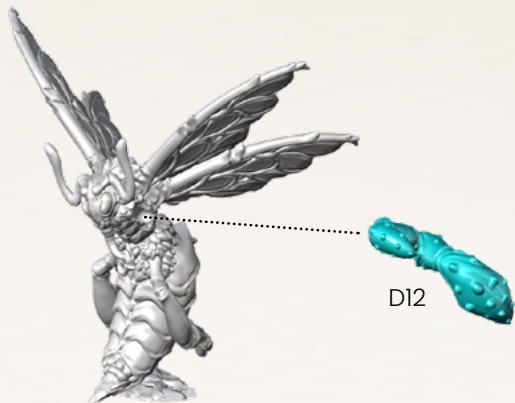
2



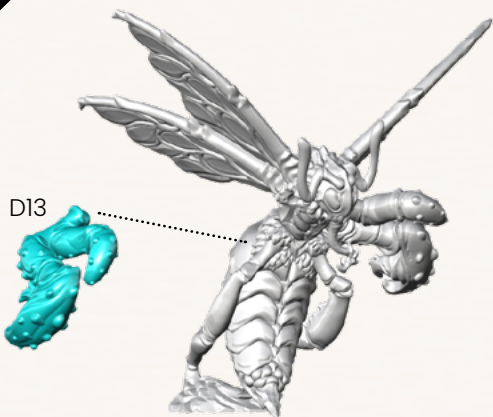




2

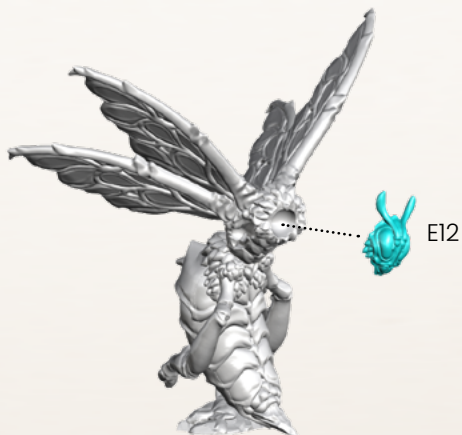


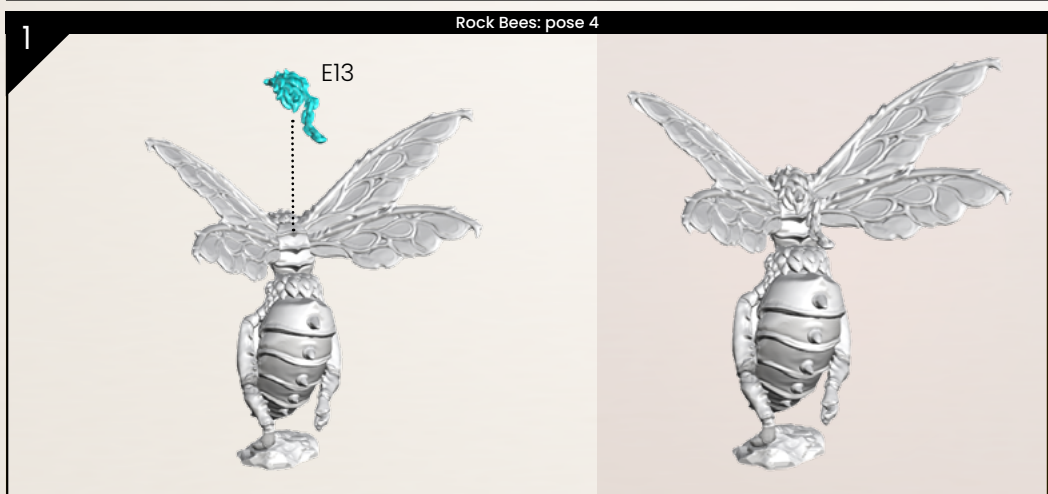
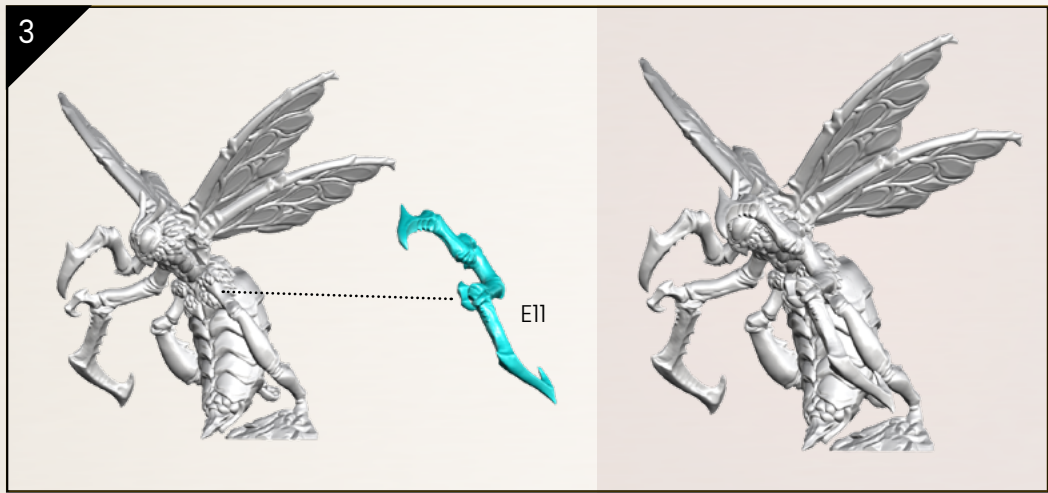
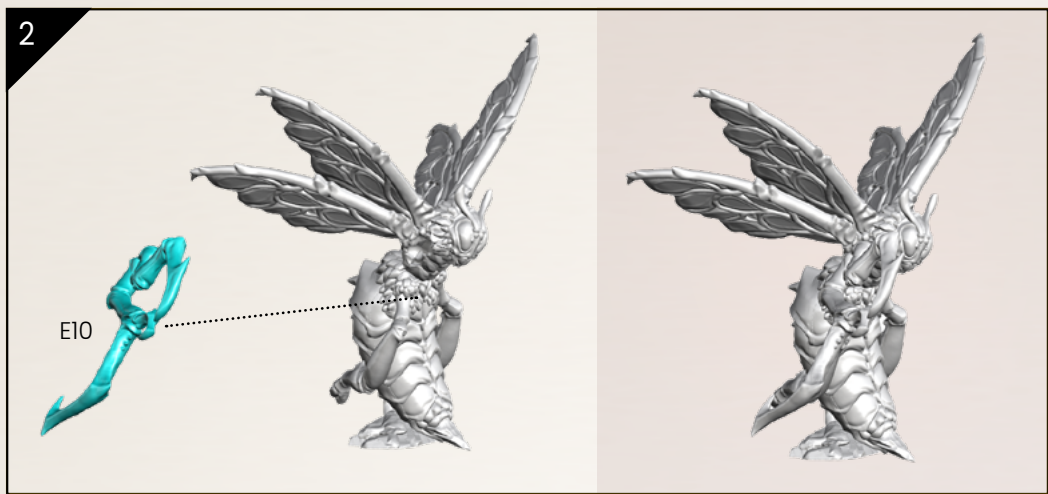
3



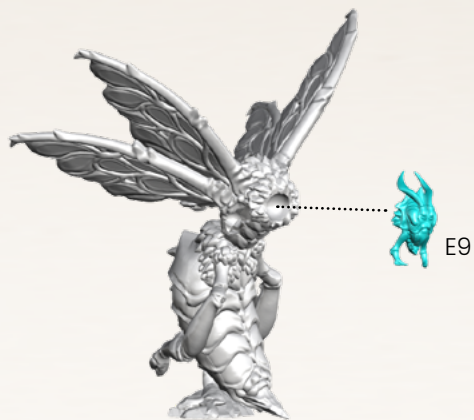
Rock Bees: pose 3

1

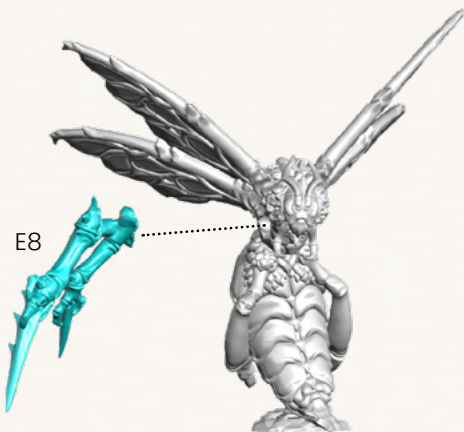




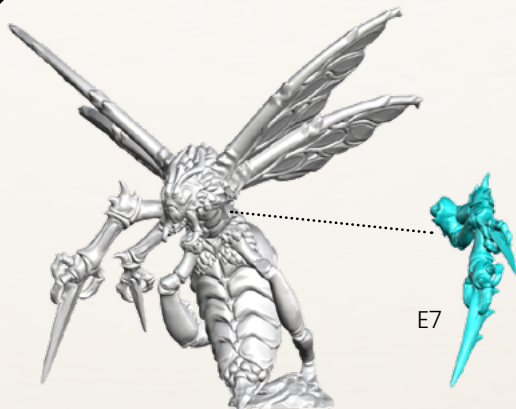
2



3



4



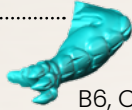
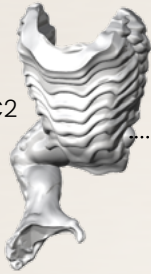
# YOUNG FIRE WYRM

SPRUE: Add On 1 - 3

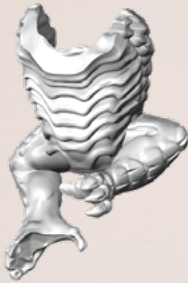
1

Young Fire Wym: base

B2, C2

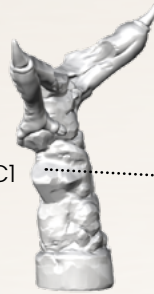


B6, C6



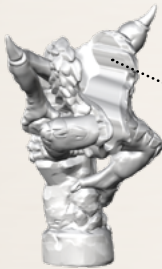
2

B1, C1



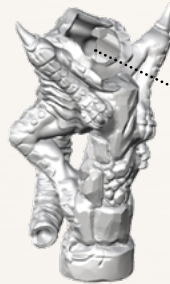
3

B4, C4



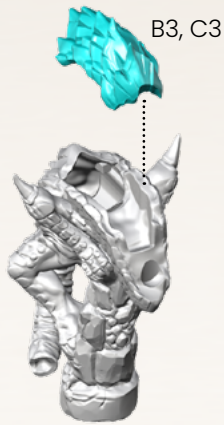
4

B5, C5



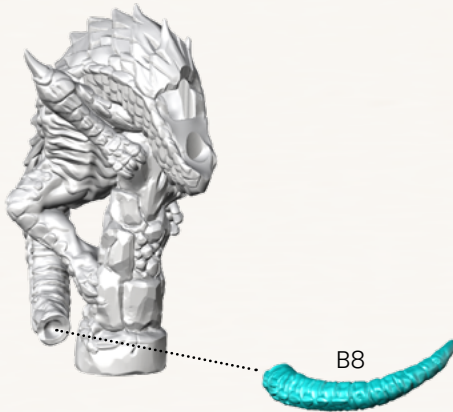


5

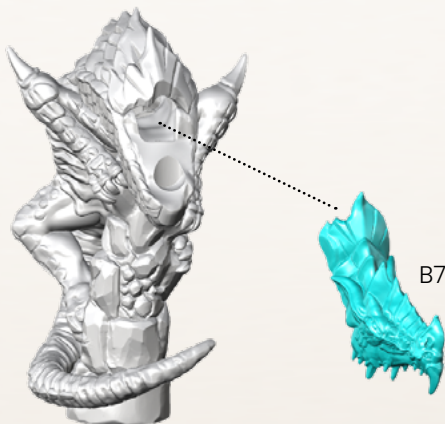


Young Fire Wyrn: pose 1

1

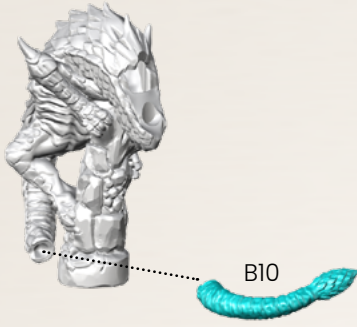


2

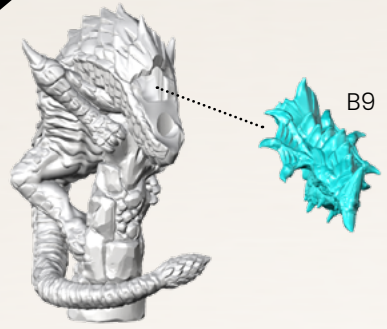


1

Young Fire Wyrn: pose 2

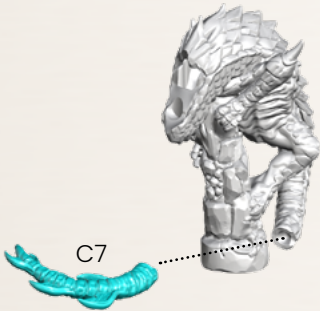


2

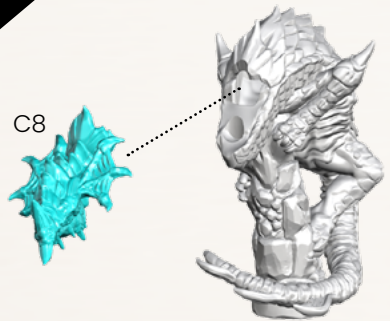


1

Young Fire Wyrn: pose 3

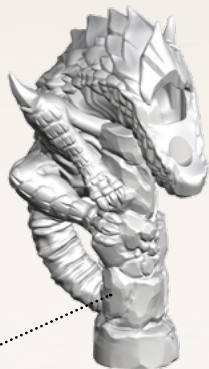


2



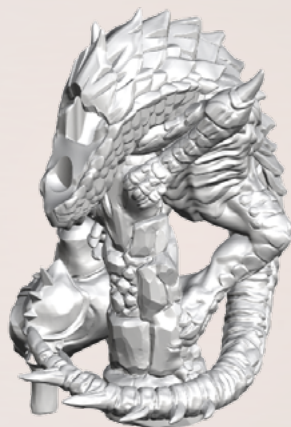
1

C11



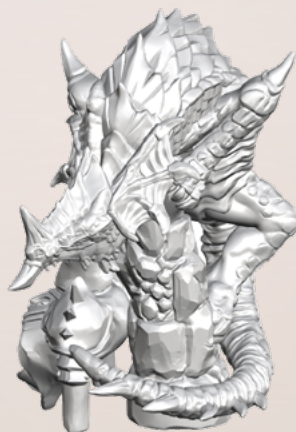
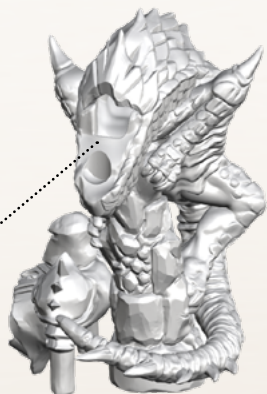
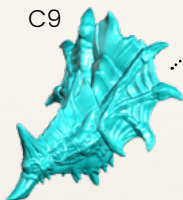
2

C10



3

C9

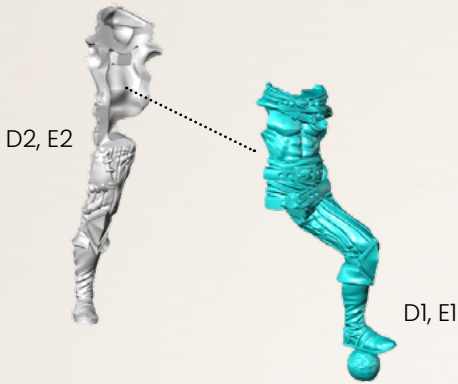


# SKY PIRATE ROOKIE

SPRUE: Add On 1 - 5

Sky Pirate Rookie: base

1

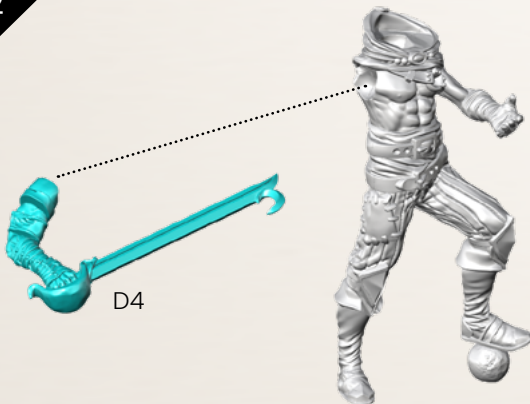


1

Sky Pirate Rookie: pose 1

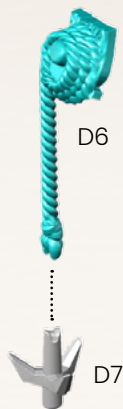


2

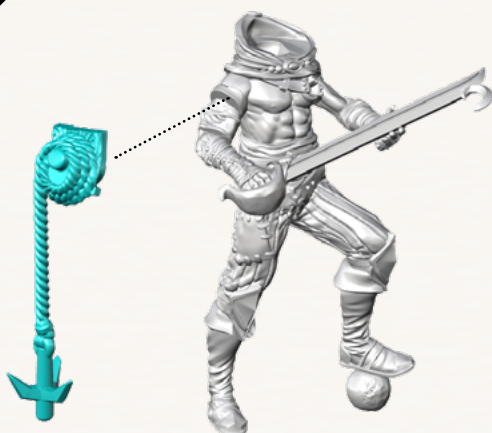




3



4

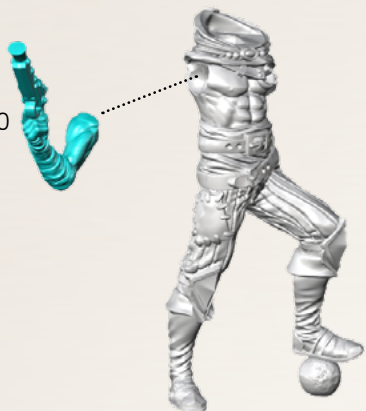


5



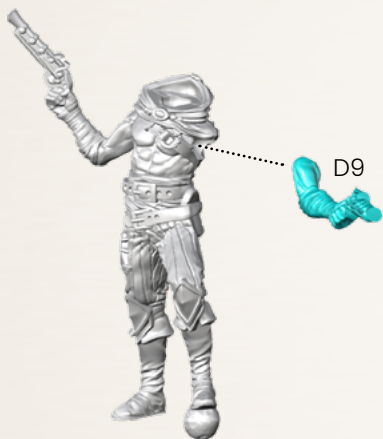
1

D10



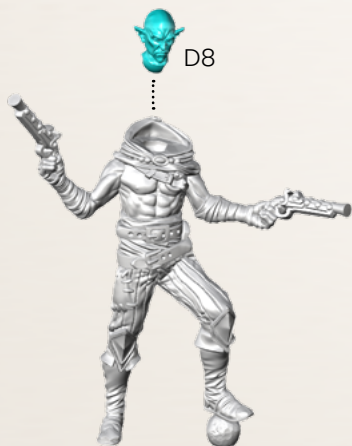
2

D9

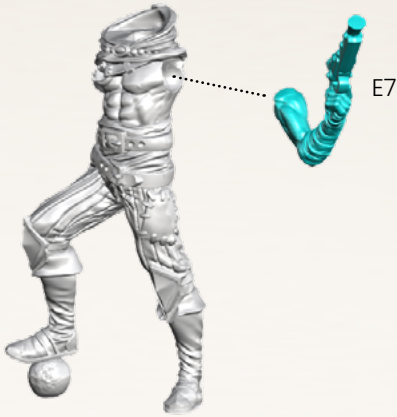


3

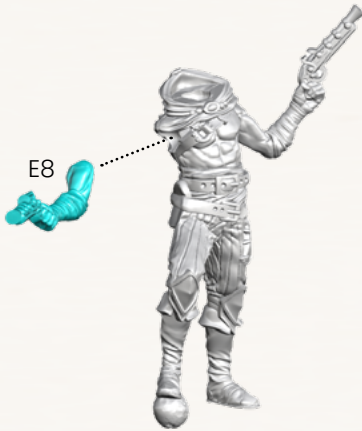
D8



1



2



3

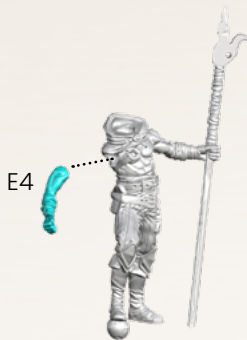


1

Sky Pirate Rookie: pose 4



2



3



4



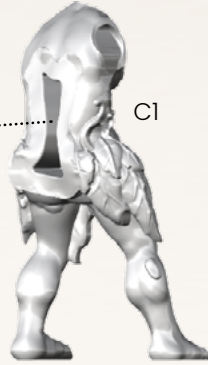
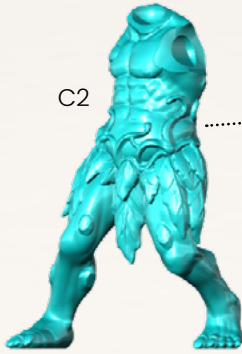


# RASHERS' GUARDS

SPRUE: Add On 1 - 5

Rashers' Guards: base

1

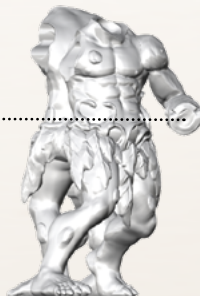
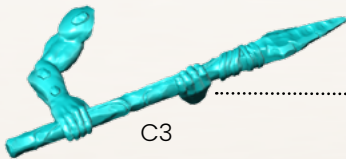


Rashers' Guards: pose 1

1



2



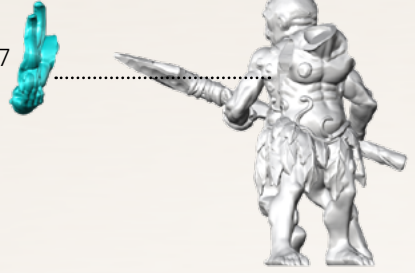
3

C13



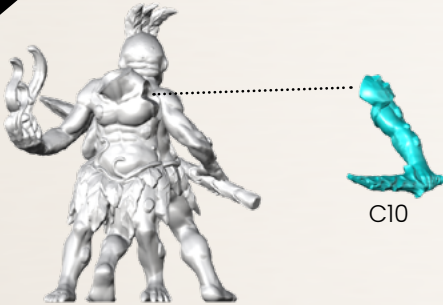
4

C7



5

C10

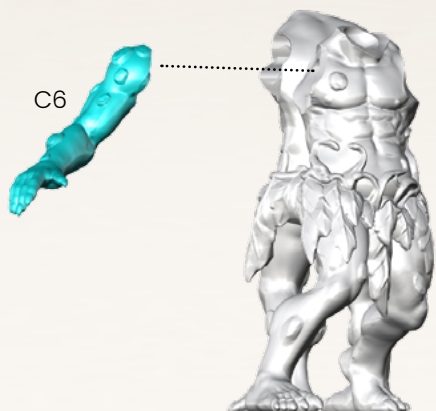


6

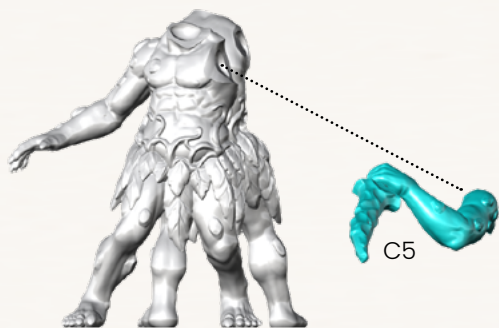
C9



1



2



3



4



C8



5



C11



6



C14



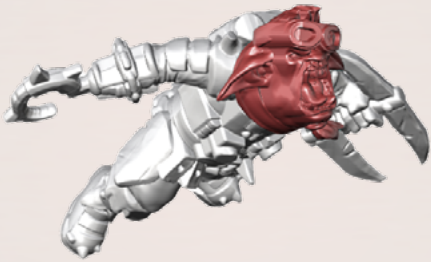
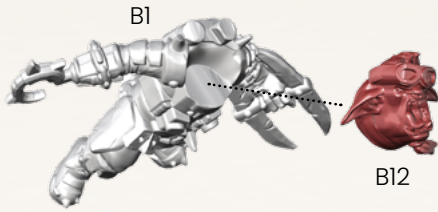


# GOBLIDERS

SPRUE: Add On 1 - 5

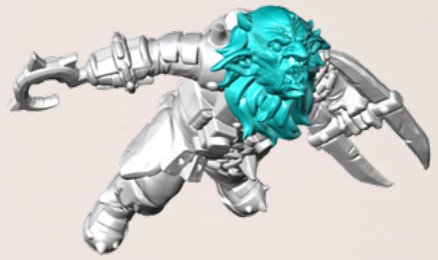
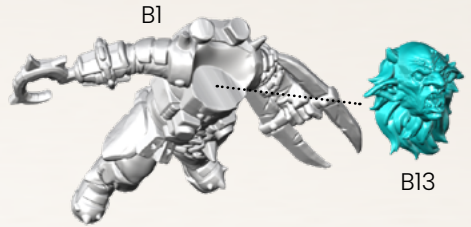
1

Gobliders: pose 1, version 1

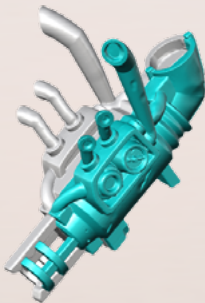
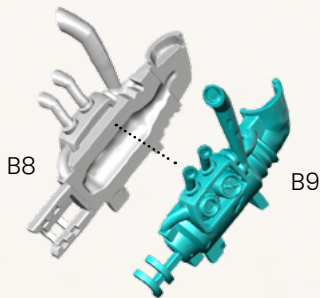


1

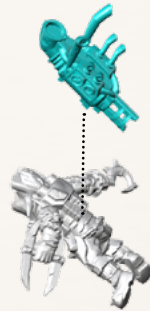
Gobliders: pose 1, version 2



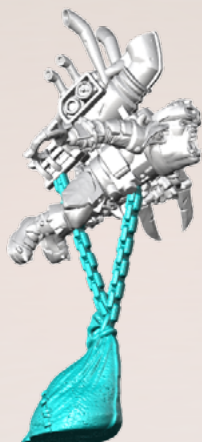
2



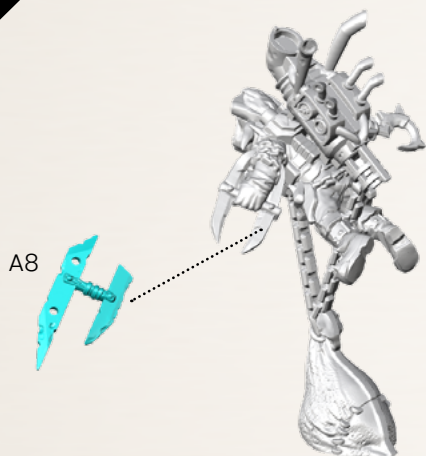
3



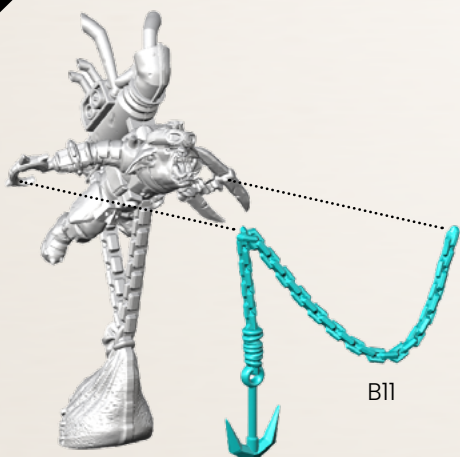
4

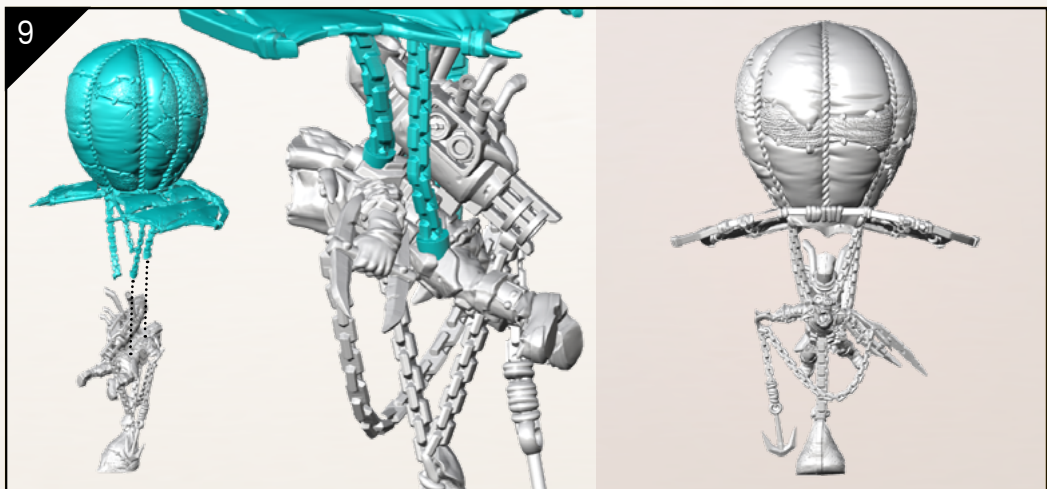
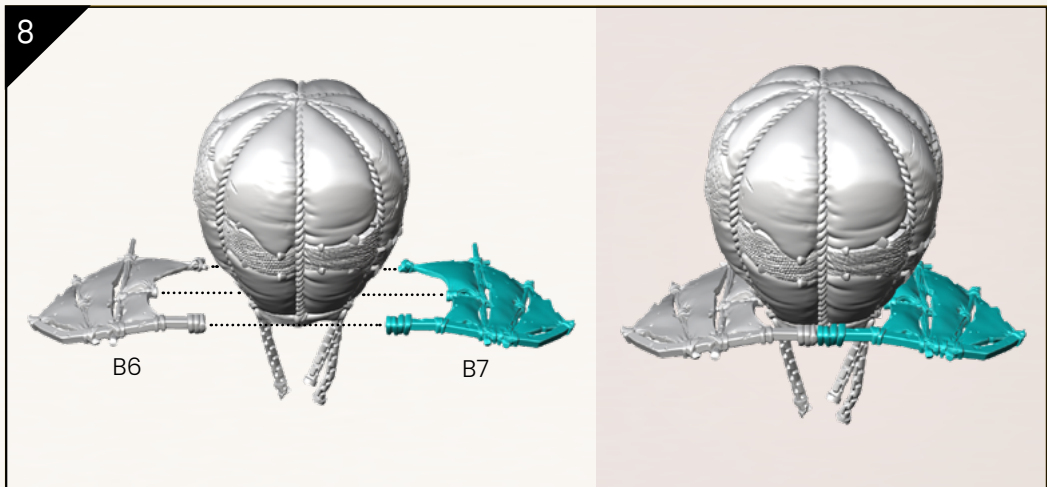
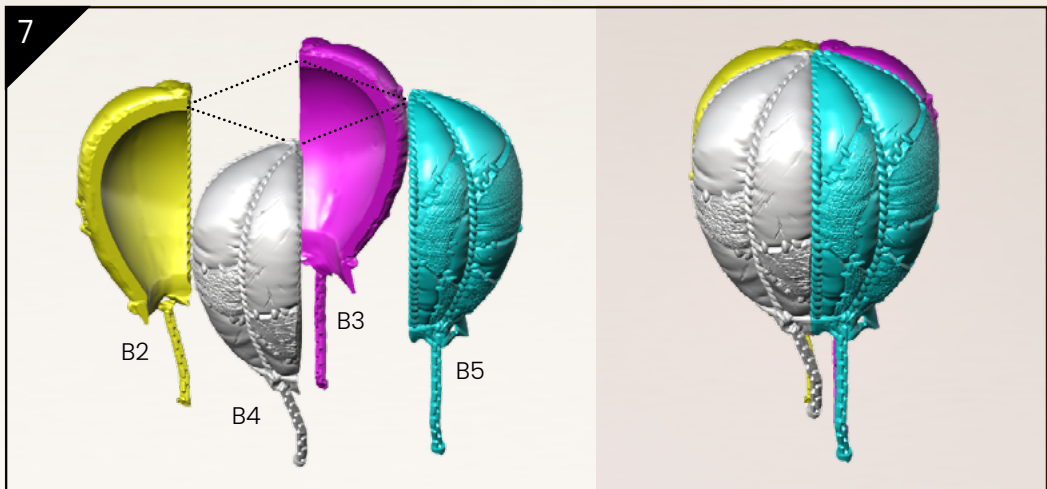


5



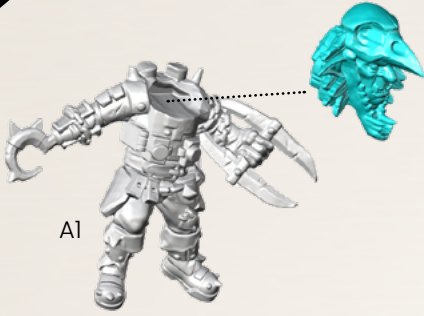
6





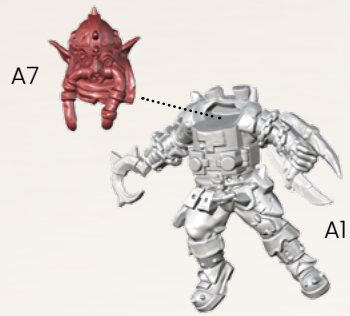
1

Gobliders: pose 2, version 1

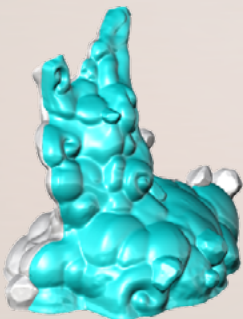
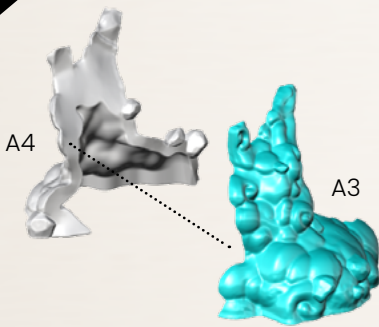


2

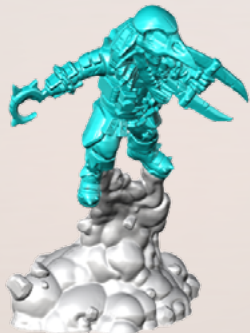
Gobliders: pose 2, version 2



3



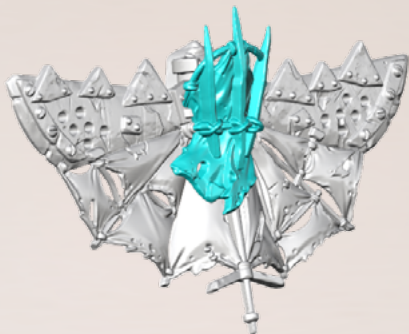
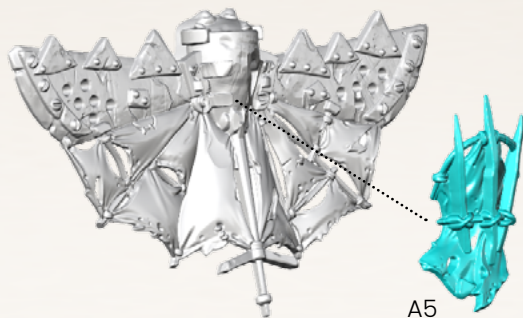
4



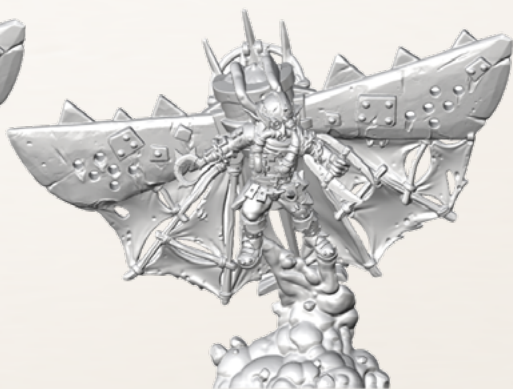
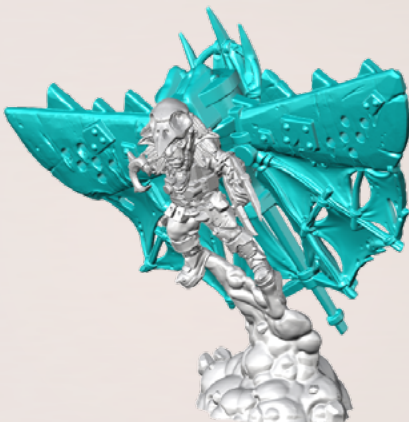
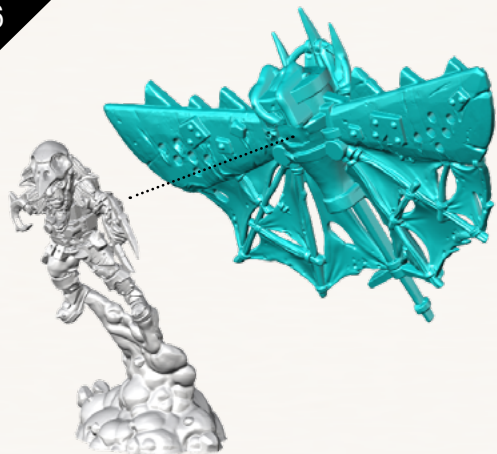


5

A2



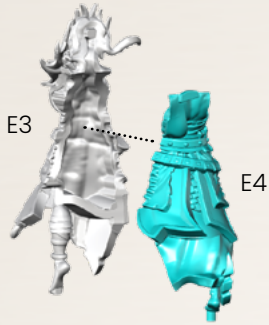
6



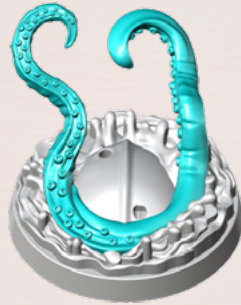
# WATERBEAST SUMMONER

SPRUE: Add On 1 - 4

1



2

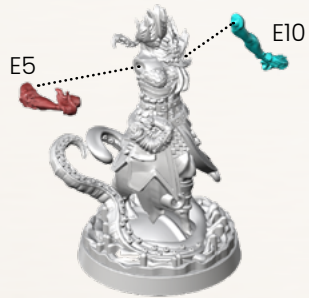


3



4

Waterbeast Summoner: pose 1



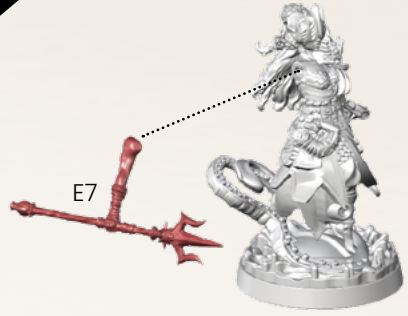
4

Waterbeast Summoner: pose 2



4

Waterbeast Summoner: pose 3



5

E8



6

Waterbeast Summoner: optional step

E6

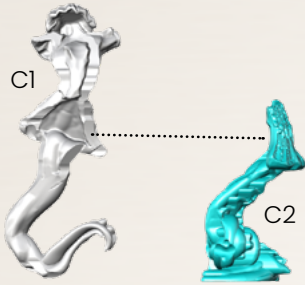


# SEA JELLYMAID

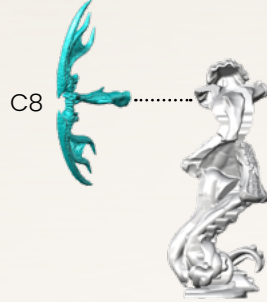
SPRUE: Add On 1 - 4

1

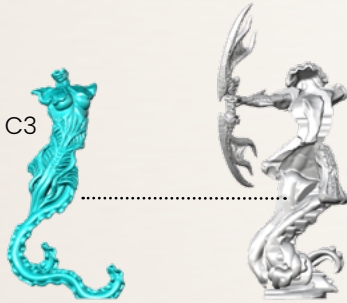
Sea Jellymaid: pose 1



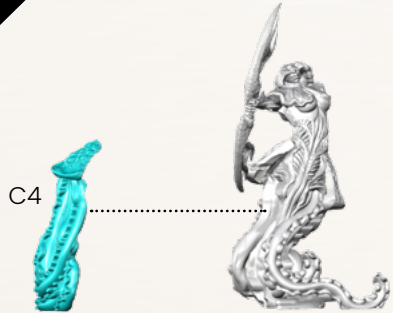
2



3



4

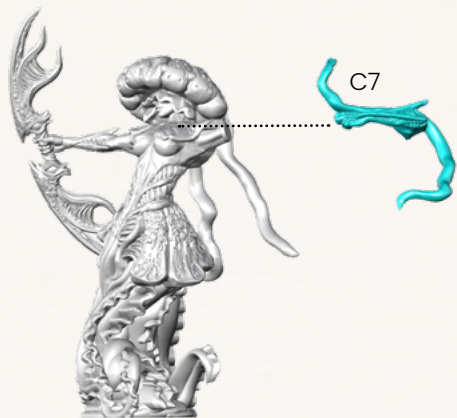




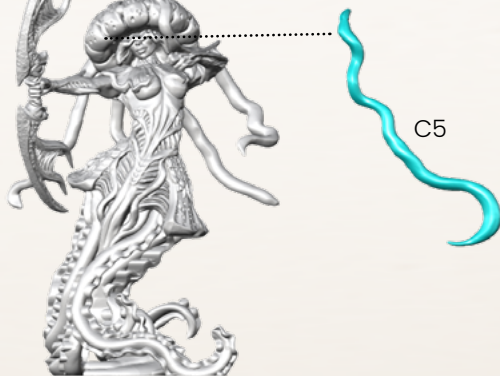
5



6

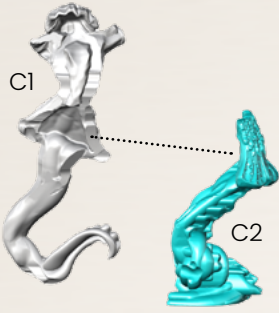


7

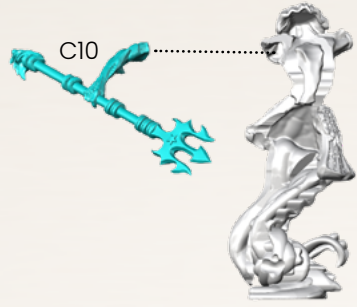


1

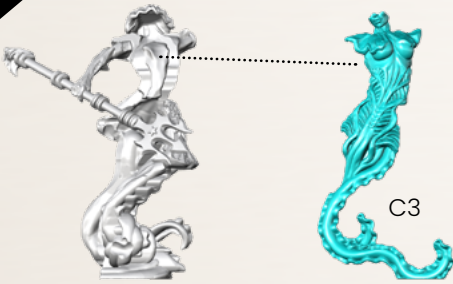
Sea Jellymaid: pose 2



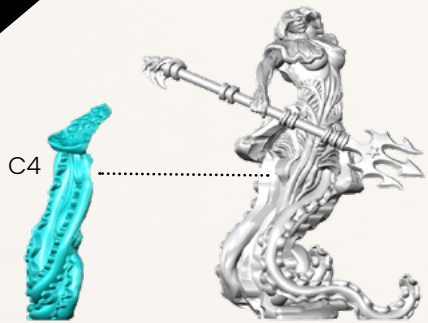
2



3



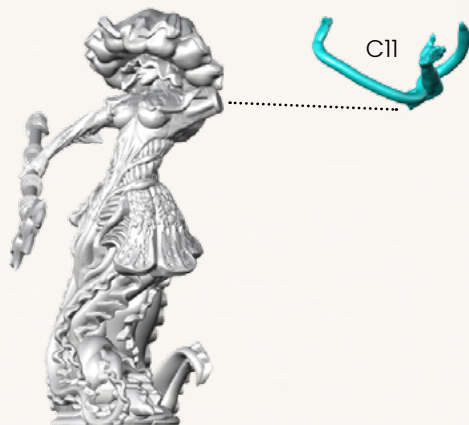
4



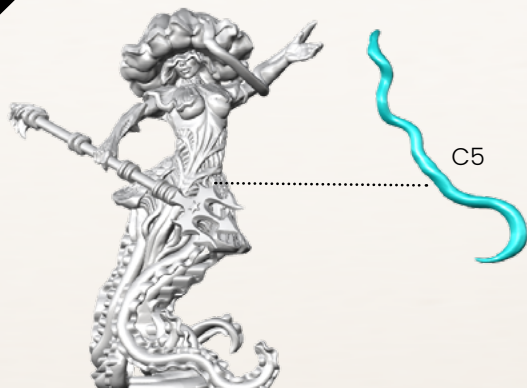
5



6

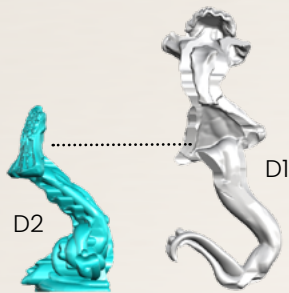


7

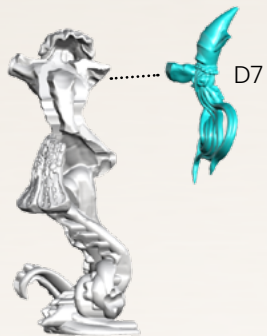


1

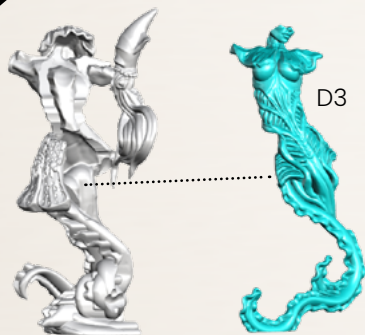
Sea Jellymaid: pose 3



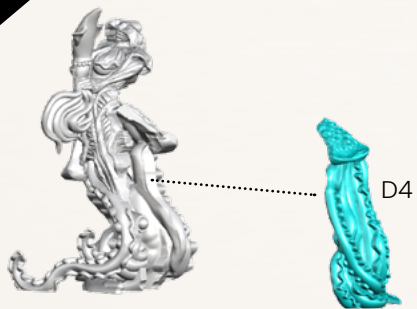
2



3



4

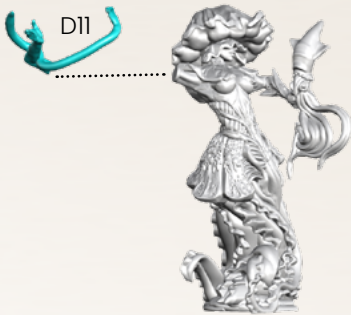




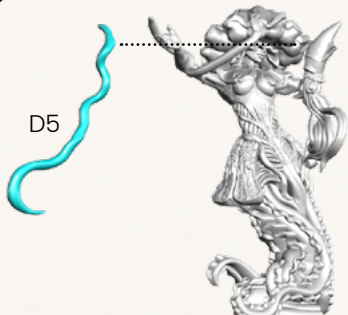
5



6

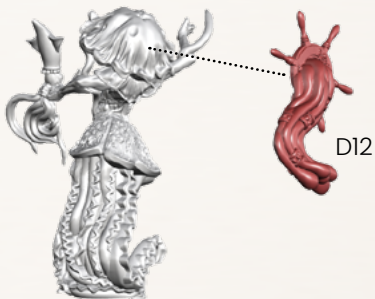


7



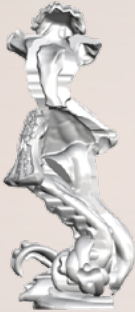
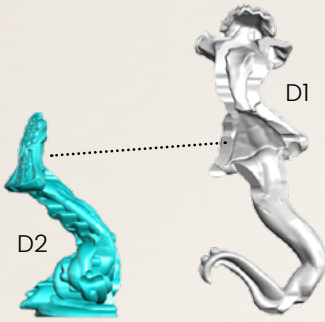
8

Sea Jellymaid: optional step

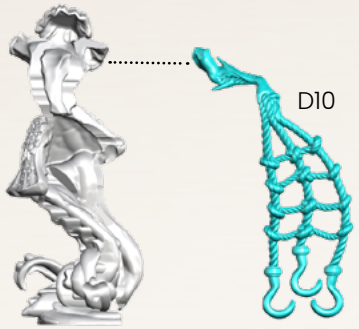


1

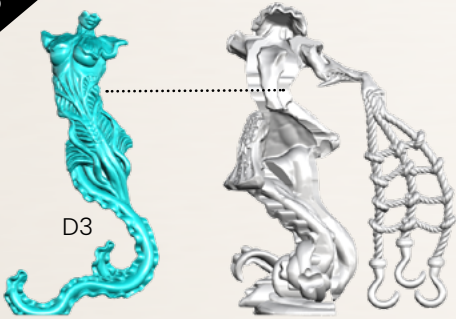
Sea Jellymaid: pose 4



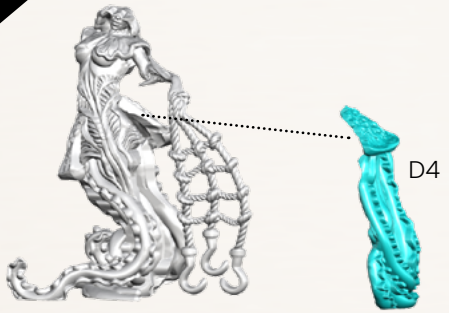
2



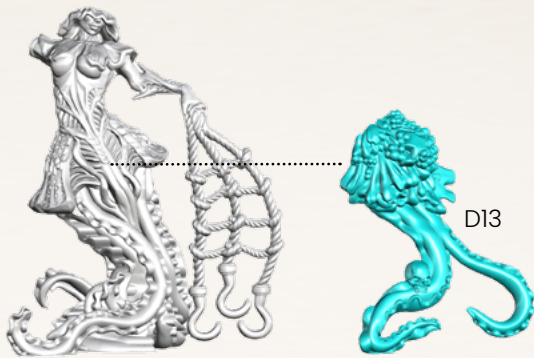
3



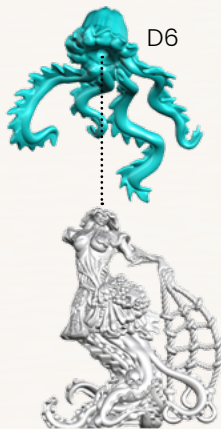
4



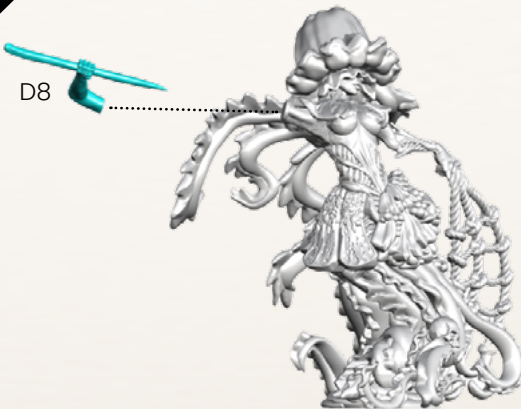
5



6



7

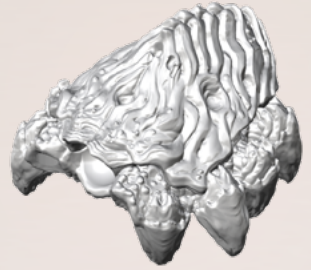
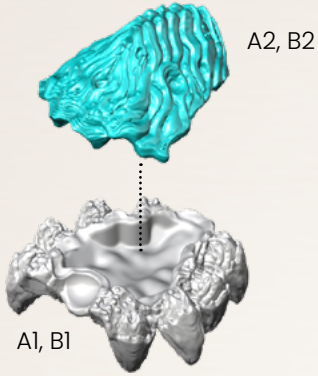


# HUSK HERMIT

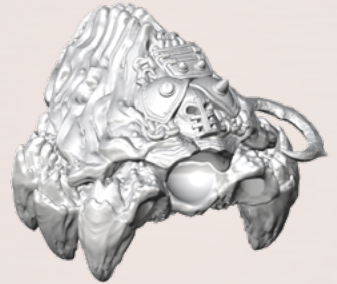
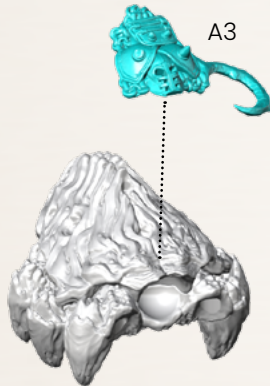
SPRUE: Add On 1 - 4

Husk Hermit: base

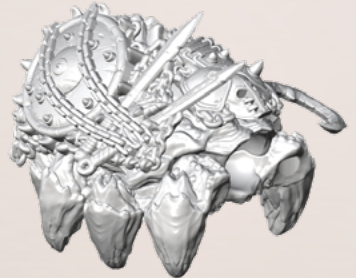
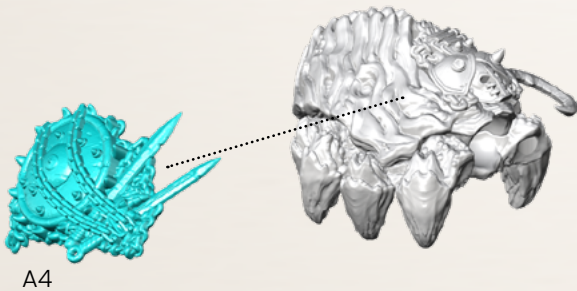
1



2

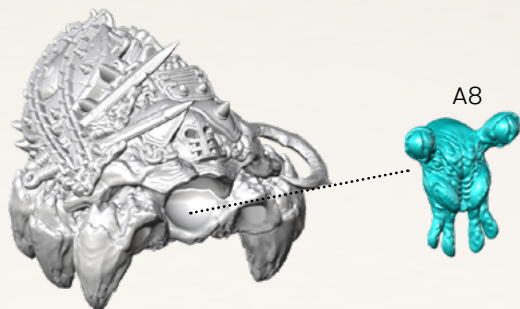


3

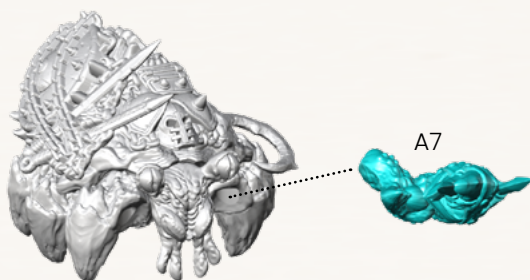




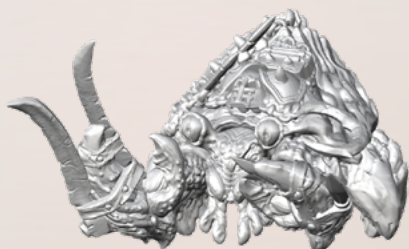
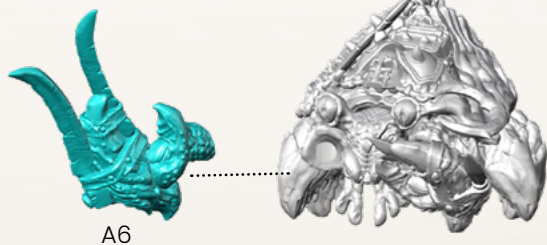
1



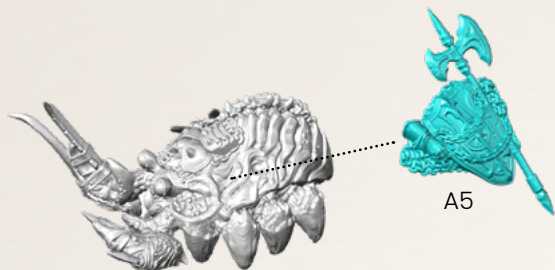
2



3

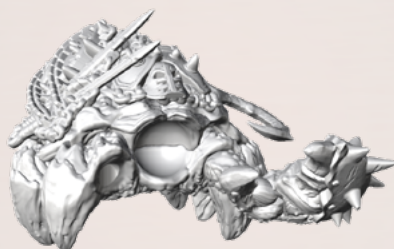
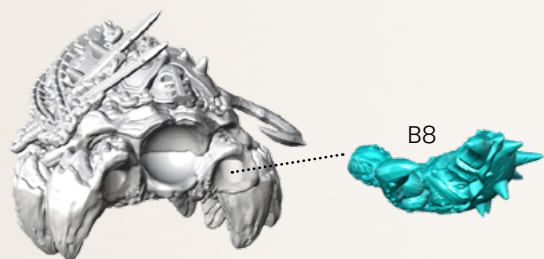


4

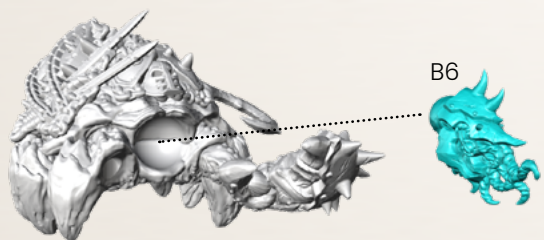


Husk Hermit: pose 2

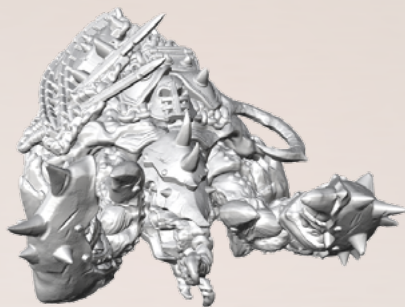
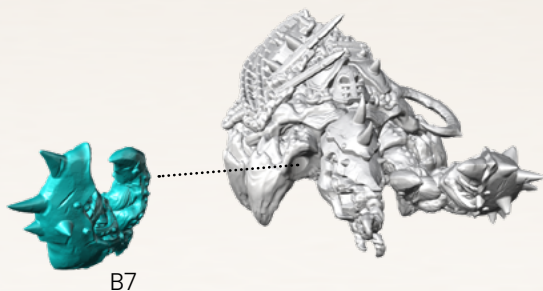
1



2

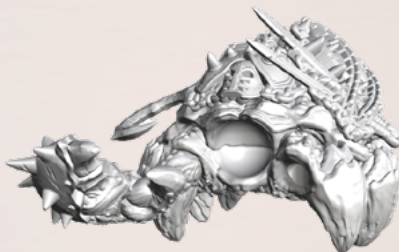
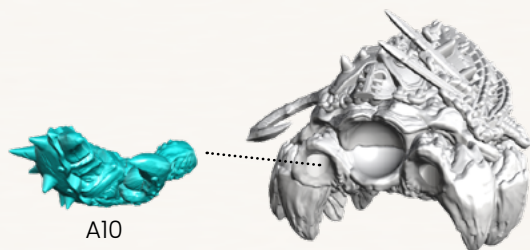


3

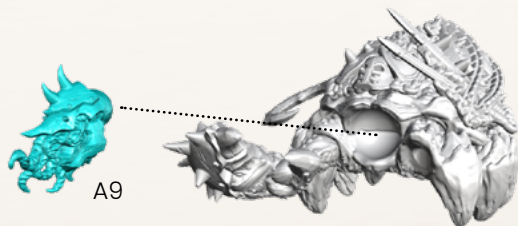


Husk Hermit: pose 3

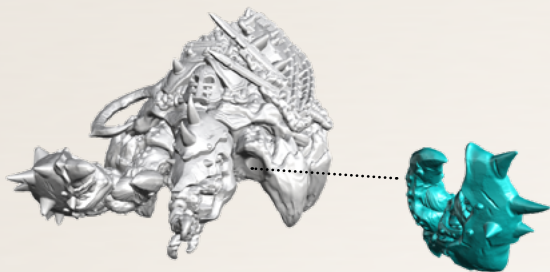
1



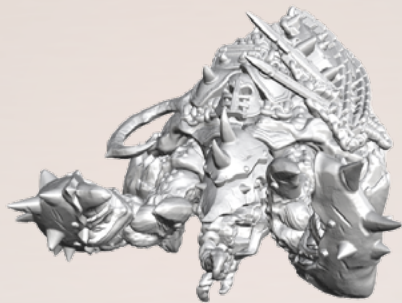
2



3

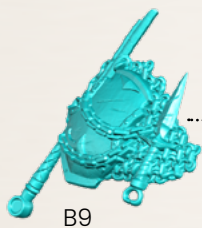


A11

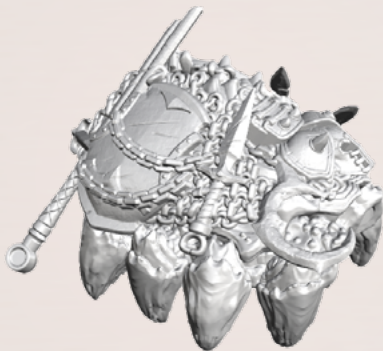
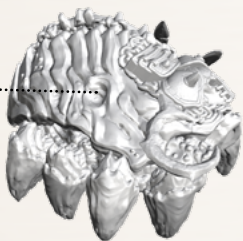


1

Husk Hermit: pose 4



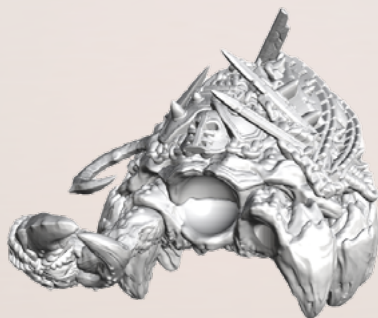
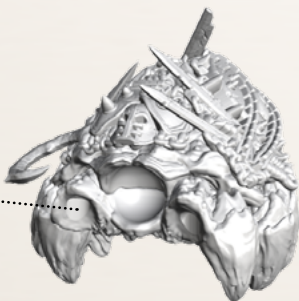
B9



2

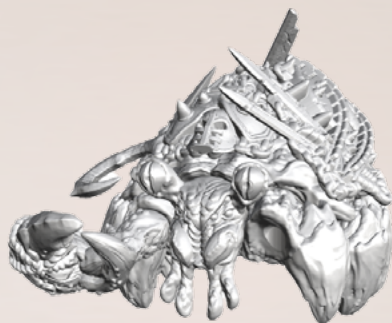
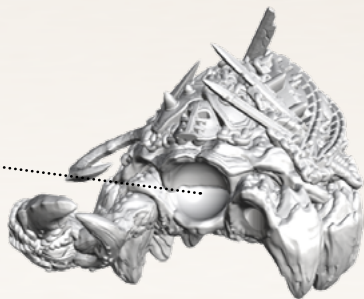


B10

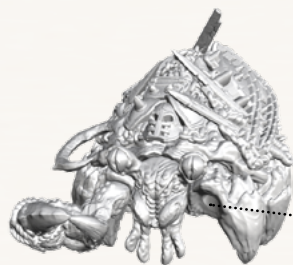




3



4

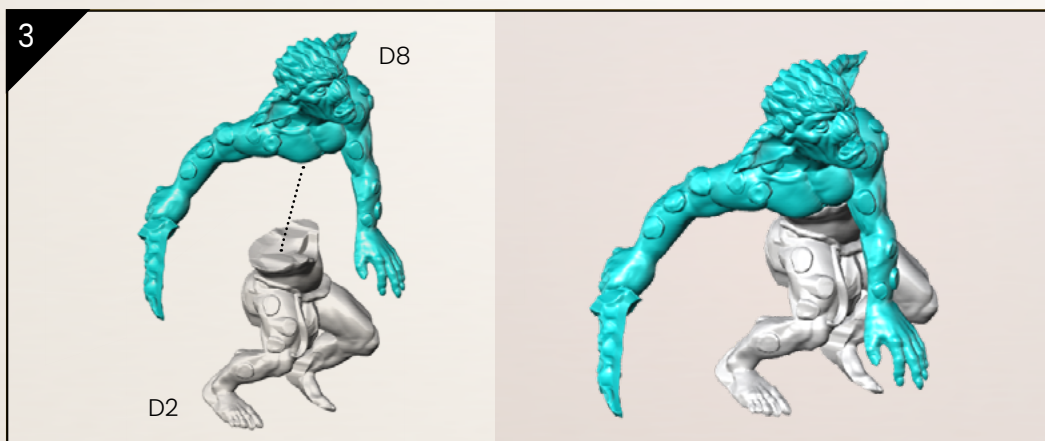
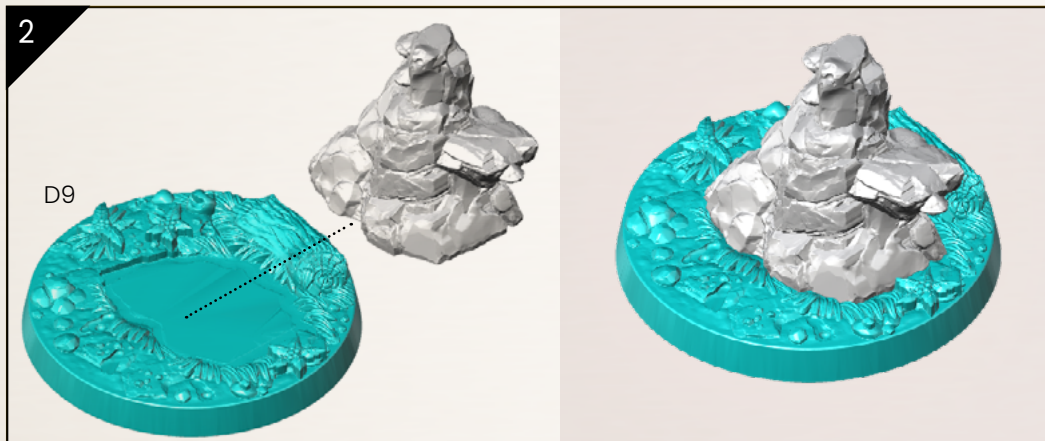
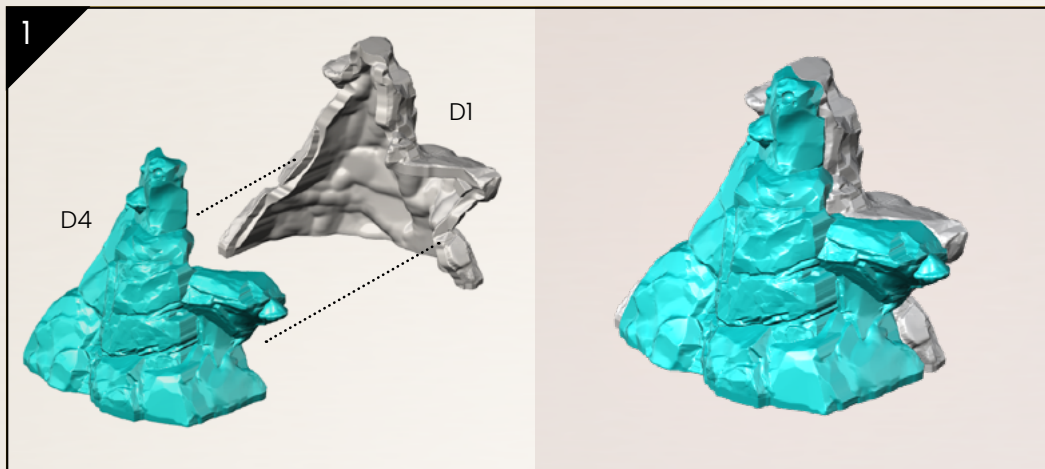


5



# RASHER PACK

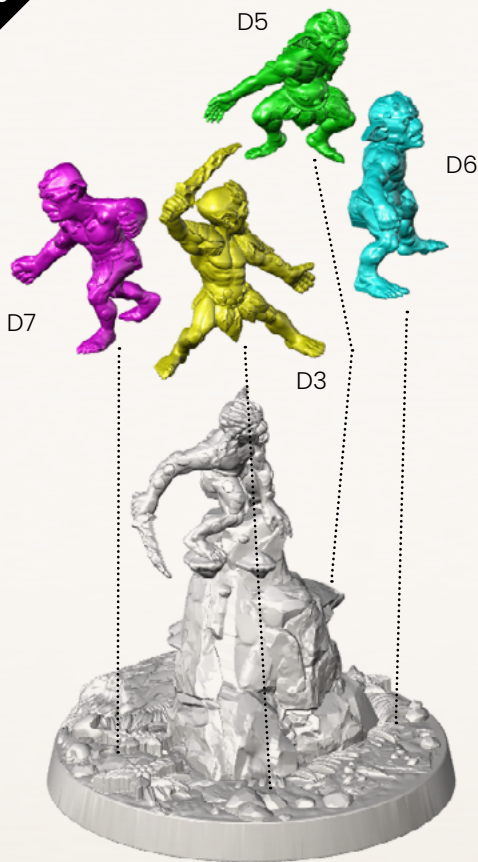
SPRUE: Add-on 1-2



4



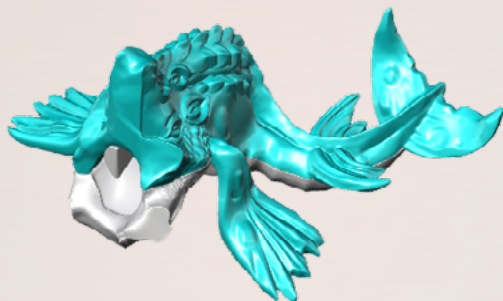
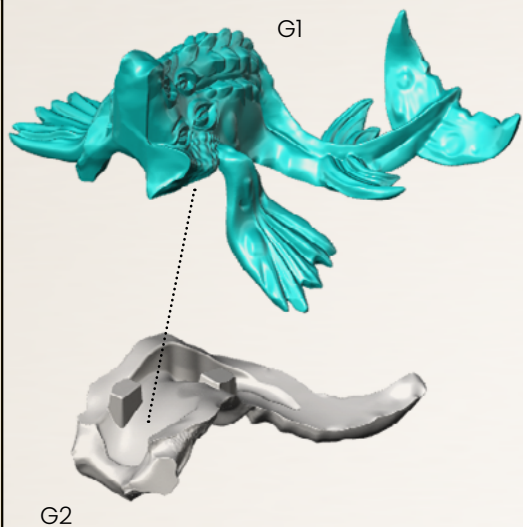
5



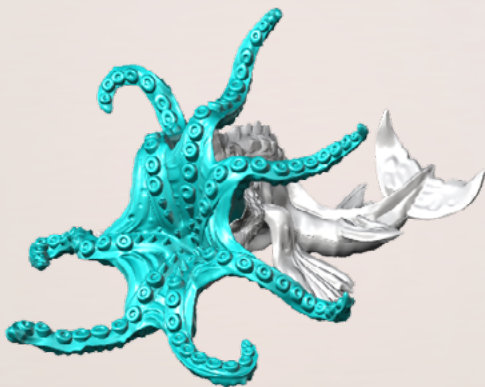
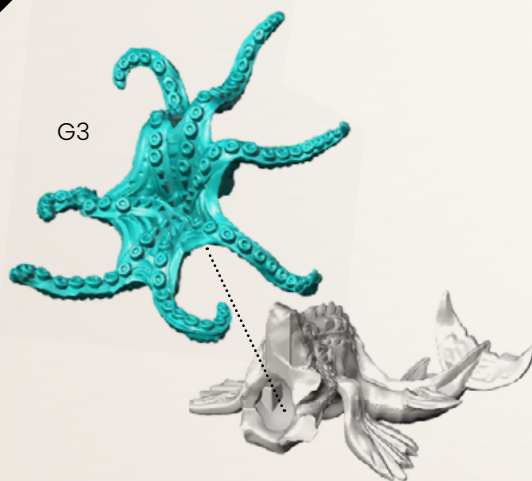
# YOUNG KRAKEN

SPRUE: Add-on 1-2

1



2

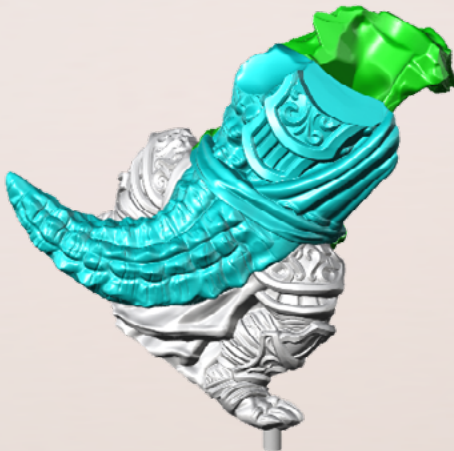
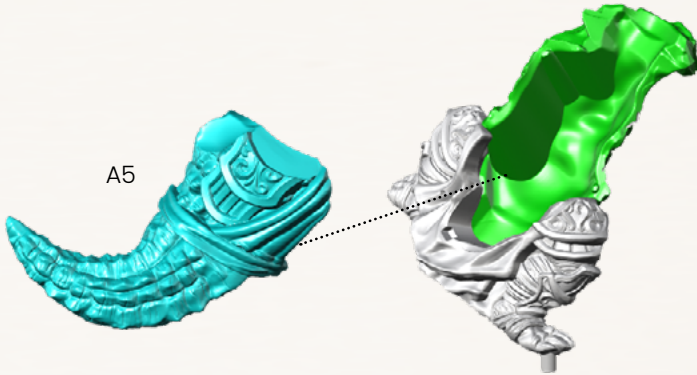
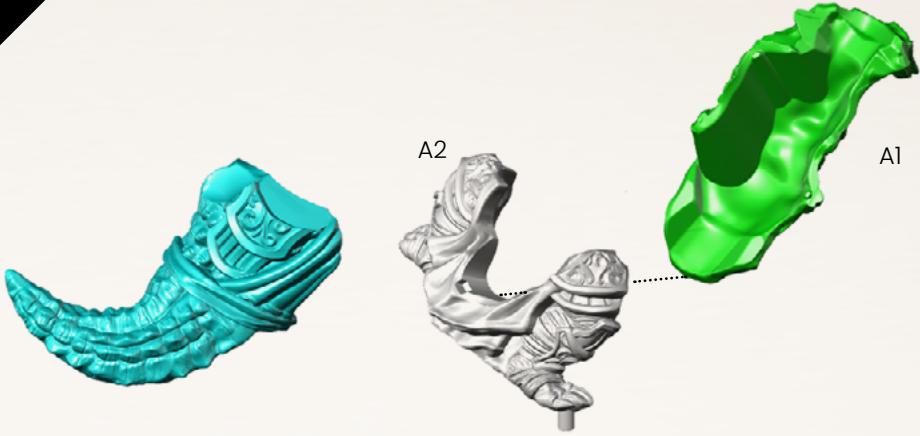




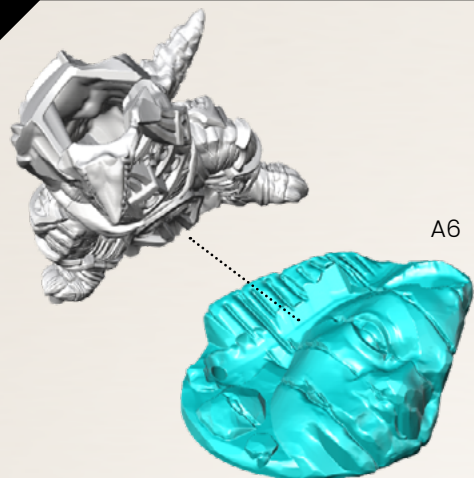
# MERFOLK SHAMAN

SPRUE: Add-on 1-2

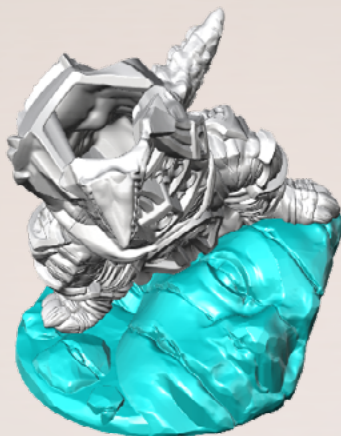
1



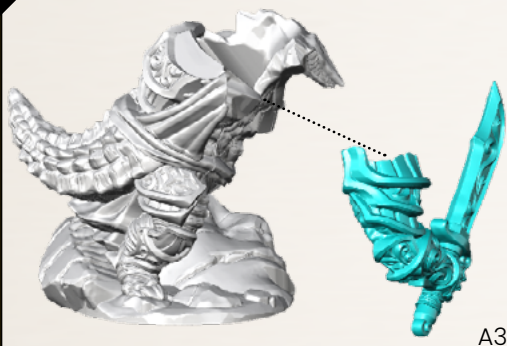
2



A6



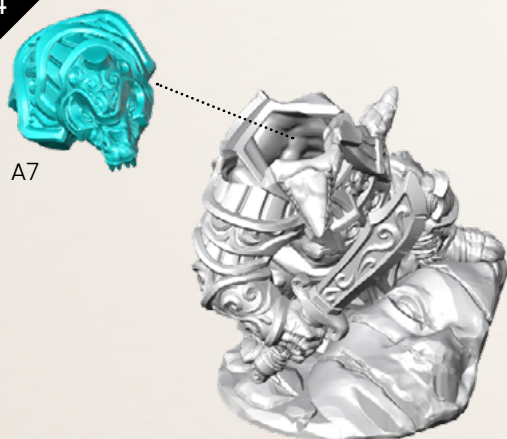
3



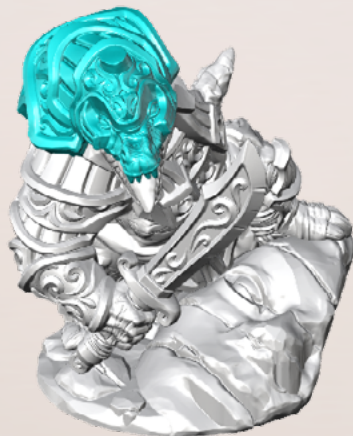
A3



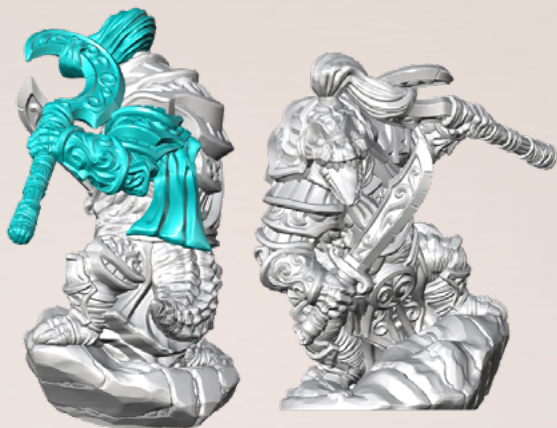
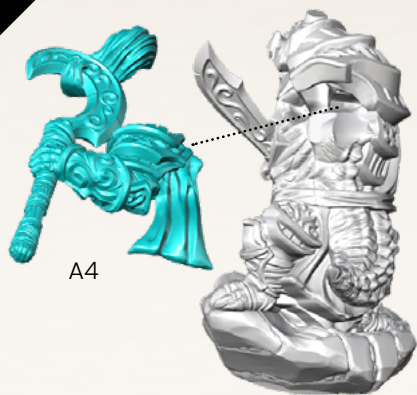
4



A7



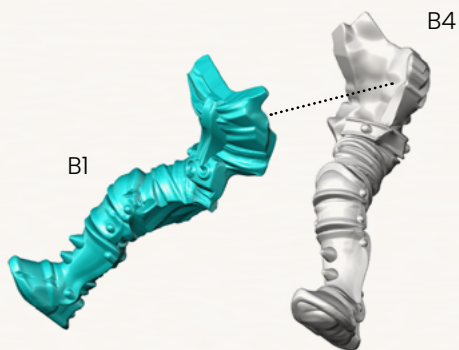
5



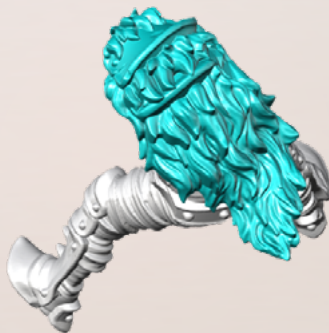
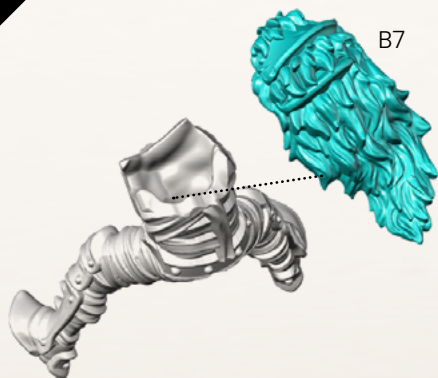
## THE DEATH KNIGHT

SPRUE: Add-on 1-2

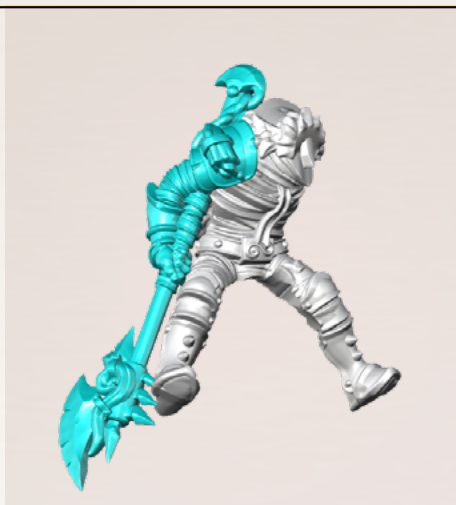
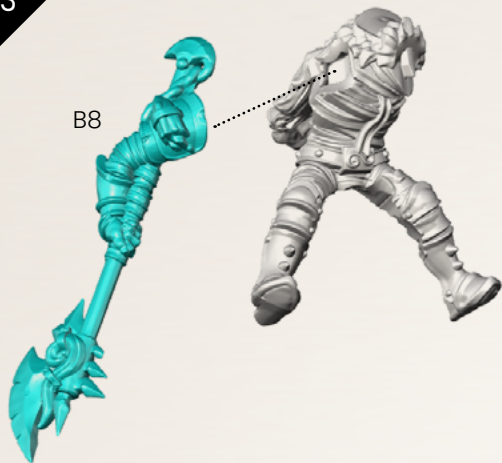
1



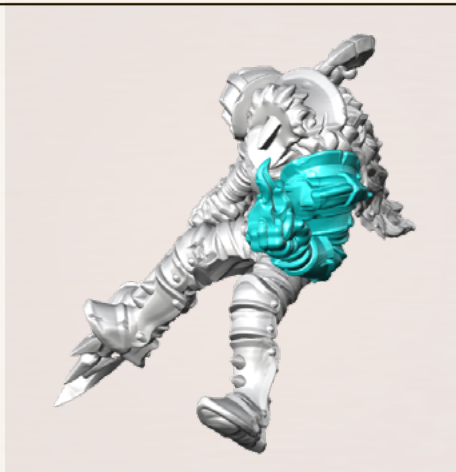
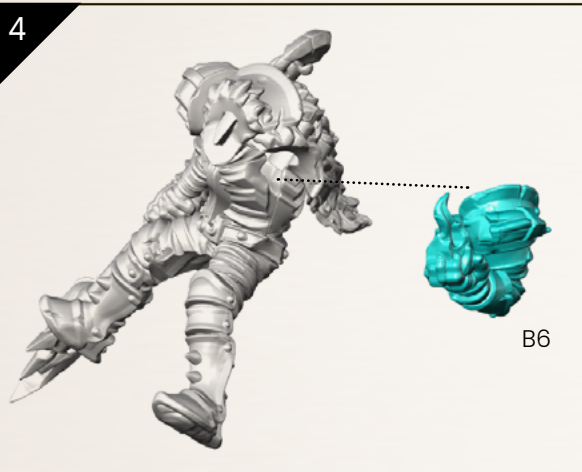
2



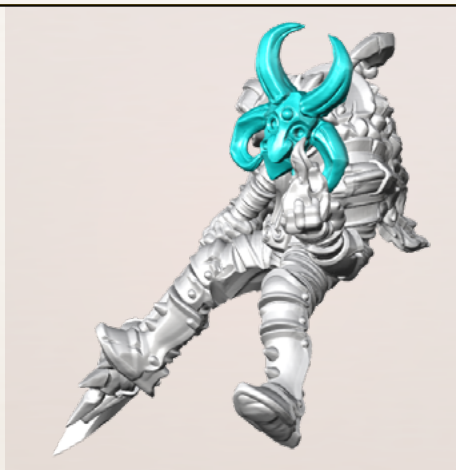
3



4



5

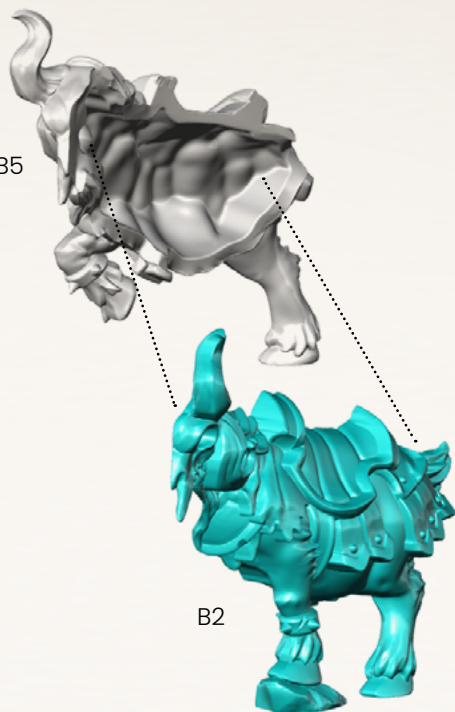




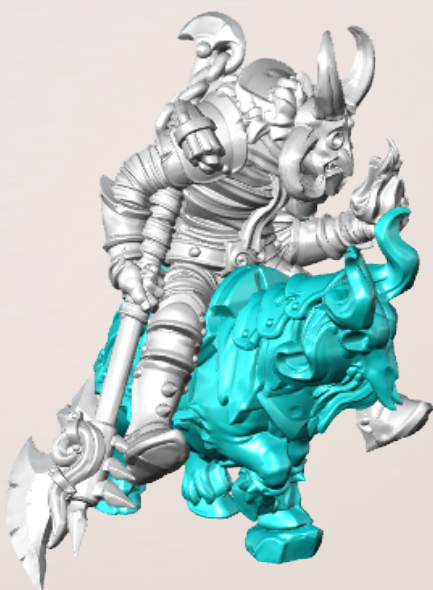
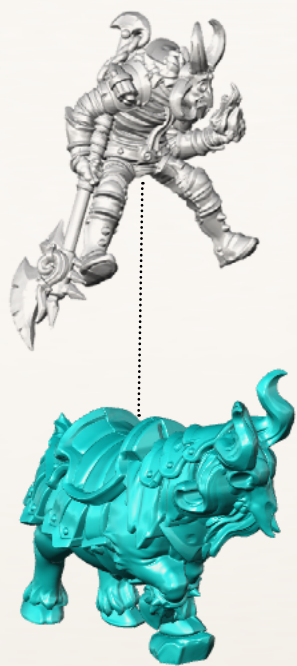
6

B5

B2



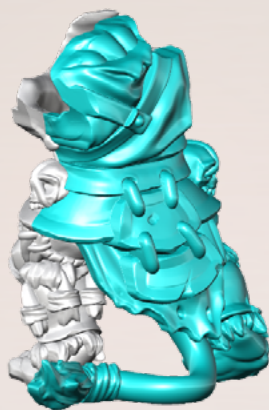
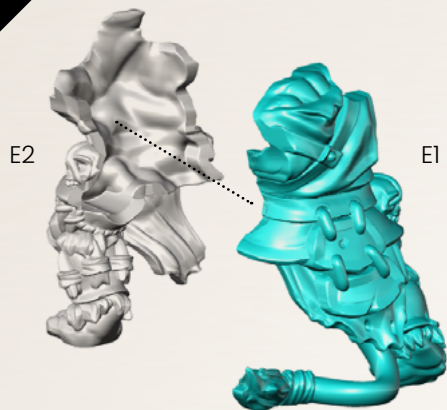
7



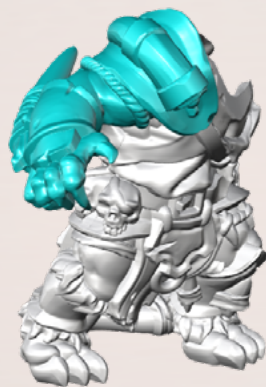
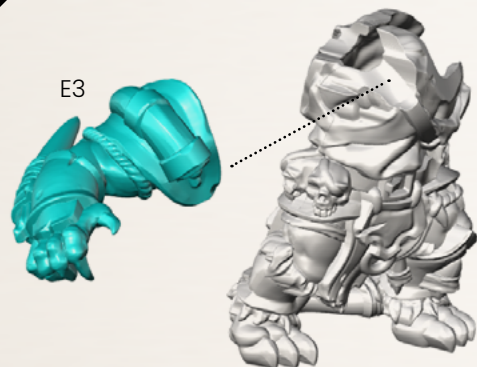
# CA'ARAK PIRATE (RAKSHASA PIRATE)

SPRUE: Add-on 1-2

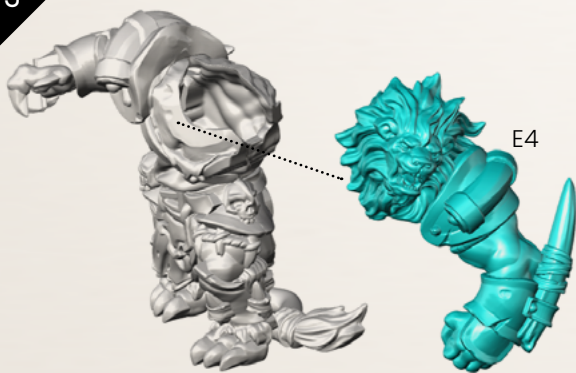
1



2

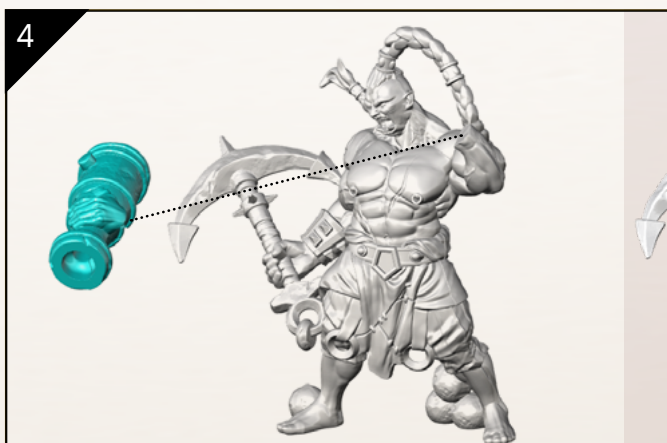
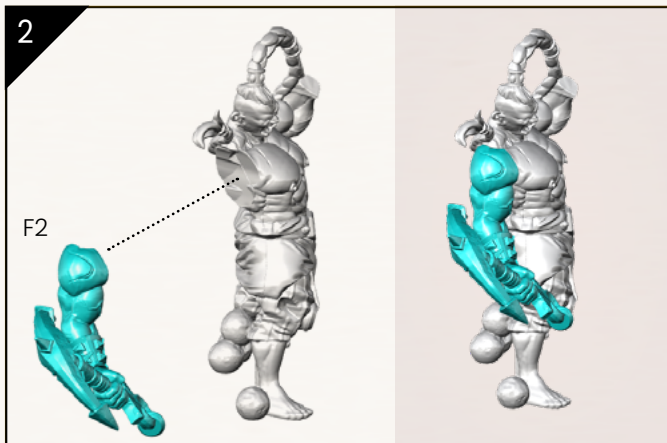
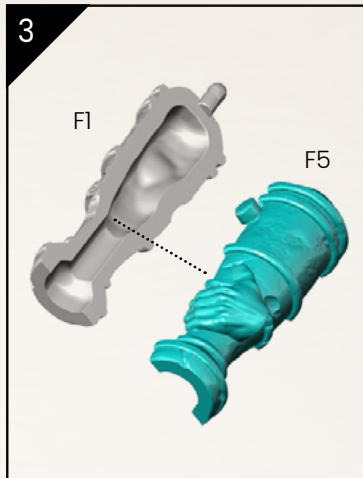
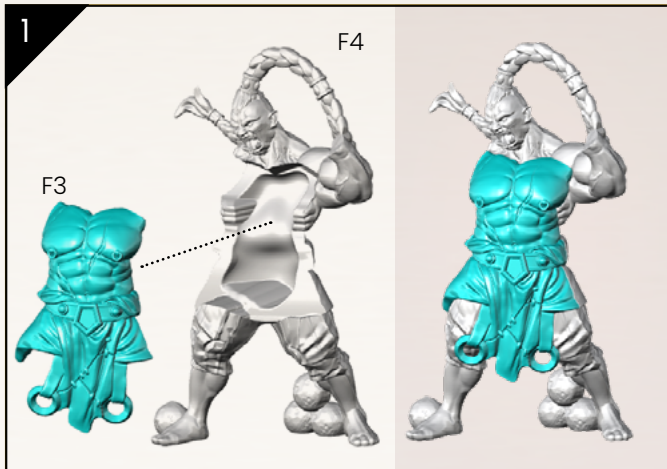


3



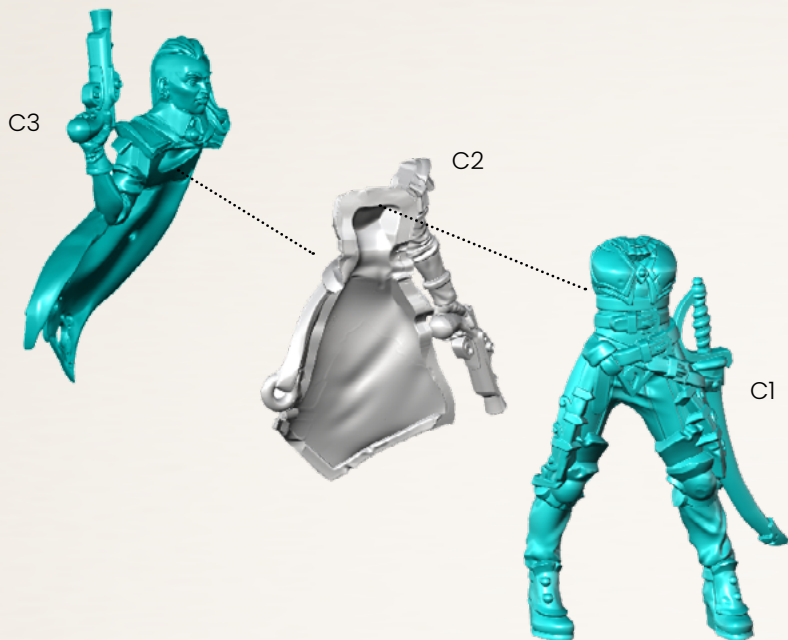
# SKY PIRATE MALE VETERAN

SPRUE: Add-on 1-2



# SKY PIRATE FEMALE VETERAN

SPRUE: Add-on 1-2







## JOIN THE PARTY



DUNGEONSANDLASERS



DUNGEONSANDLASERSOFFICIAL



DUNGEONSANDLASERS.COM



SHOP.ARCHON-STUDIO.COM