

DUNGEONS & LASERS



LAND OF THE GIANTS

TERRAIN SET

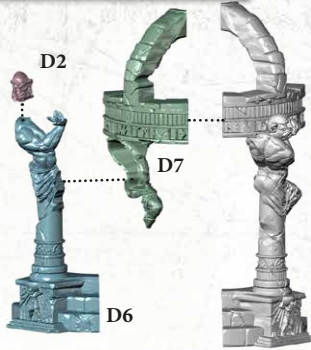
MANUAL

GIANT'S CHAPEL

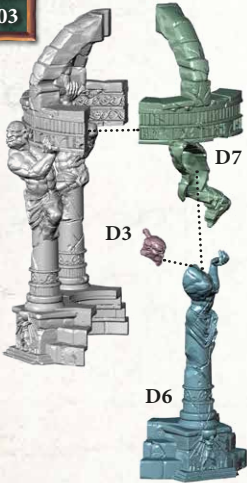
01



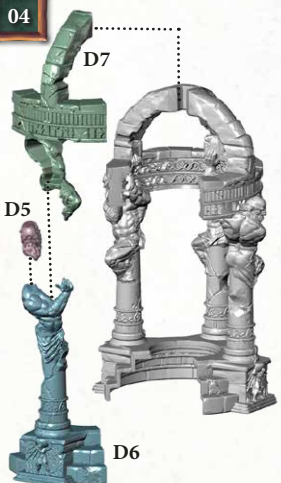
02



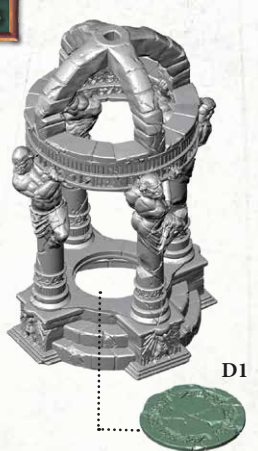
03



04



05



DAMAGED WALL

D7

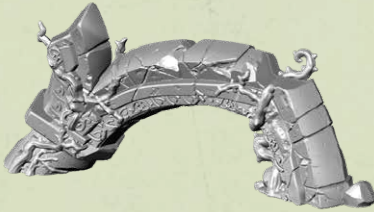
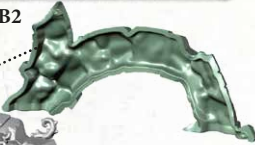
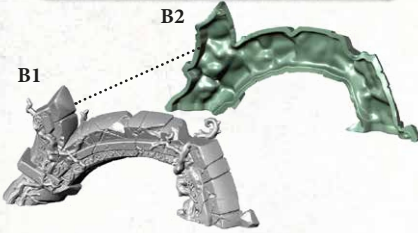
D7



BROKEN ARCH

B2

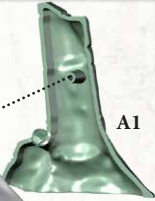
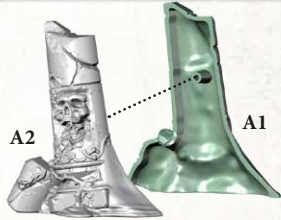
B1



SMASHED COLUMN

A2

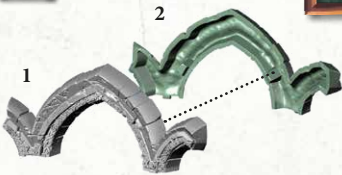
A1



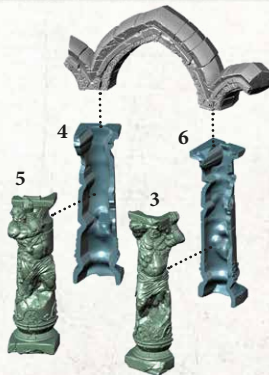
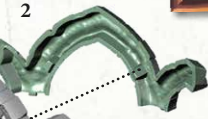
01

ARCHES

02



2



4

6

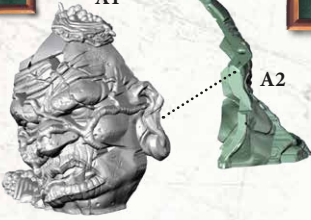
5

3



01

A1



A2



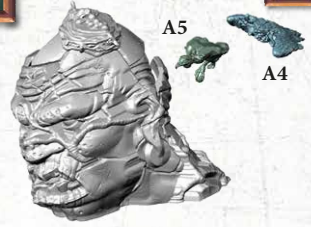
02



A3

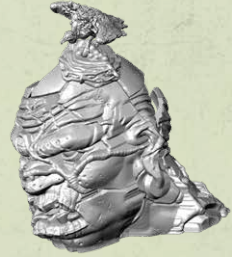


03



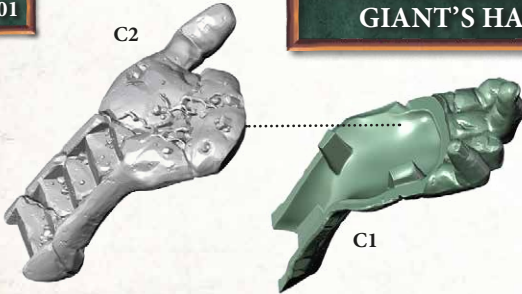
A5

A4



01

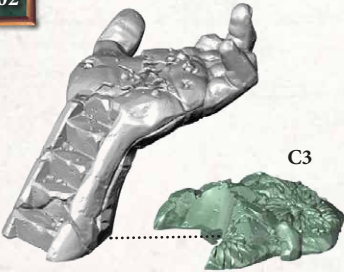
C2



C1



02



C3



DUNGEONSANDLASERS



DUNGEONSANDLASERSOFFICIAL



DUNGEONSANDLASERS.COM



www.archon-studio.com

Manufactured in the EU and distributed by Archon Sp. z o.o. Dungeons & Lasers™ and associated trademarks and trade dress are owned by Archon. ©2023 Archon.