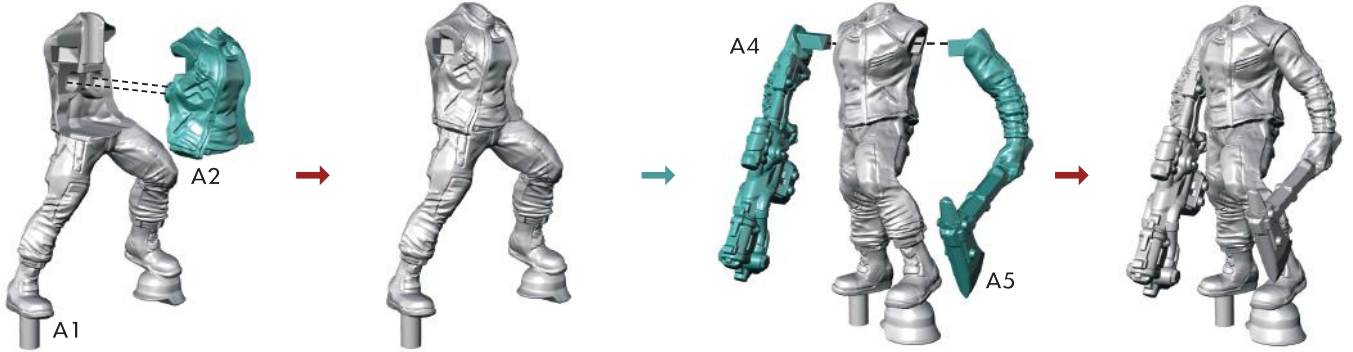


Wolfenstein[®]

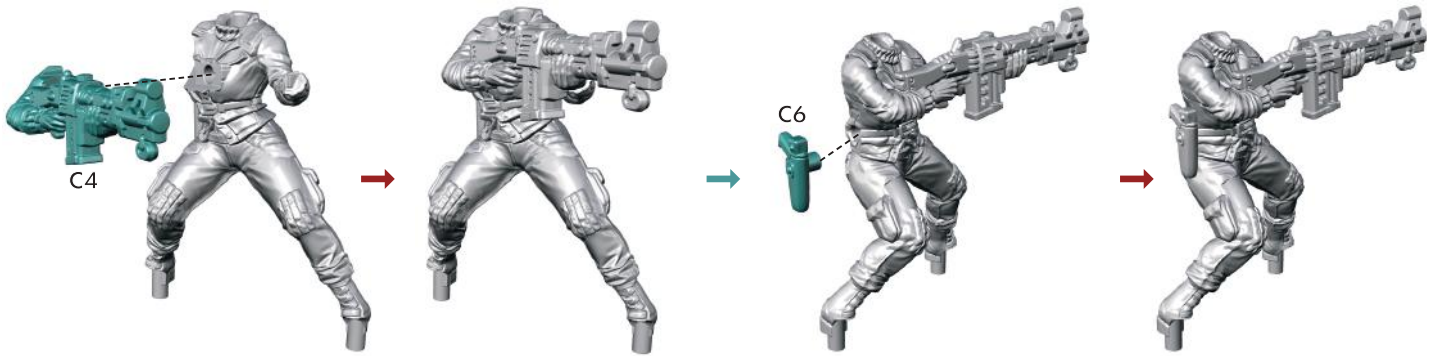
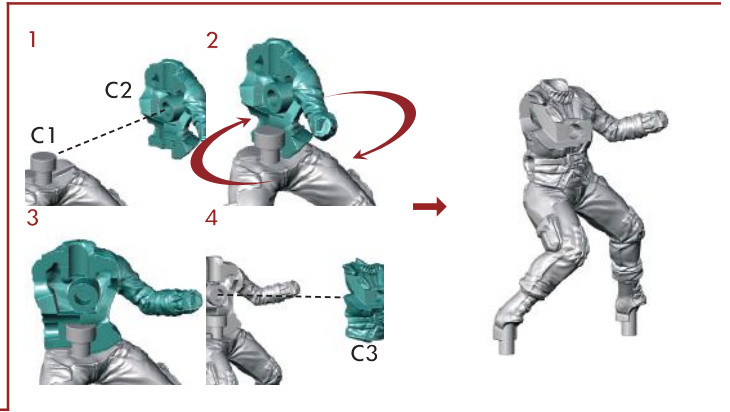
THE BOARD GAME

MODELS ASSEMBLING MANUAL



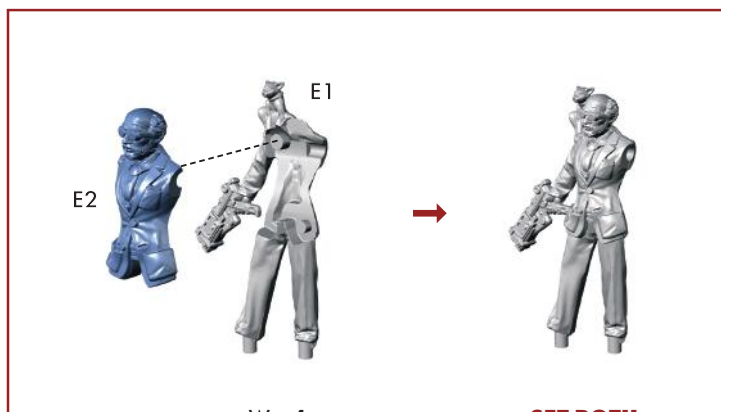
SPRUE NR: WOLF1

B. J. BLAZKOWICZ



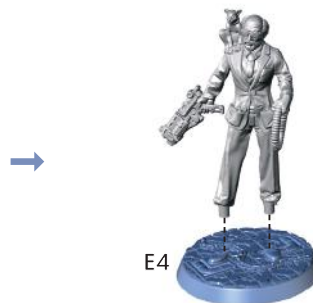
SPRUE NR: WOLF1

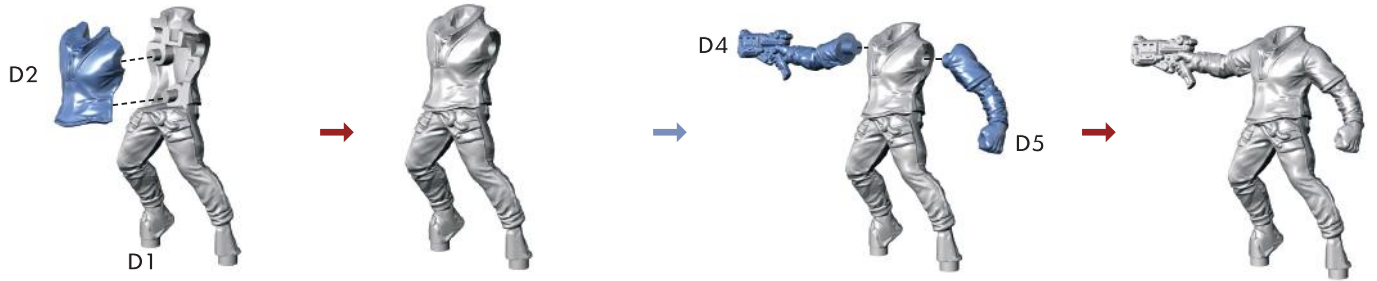
ANYA OLIVA



SPRUE NR: WOLF1

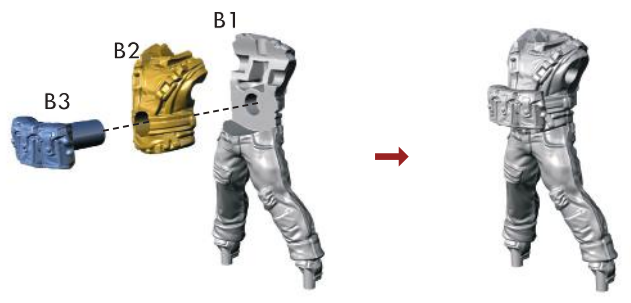
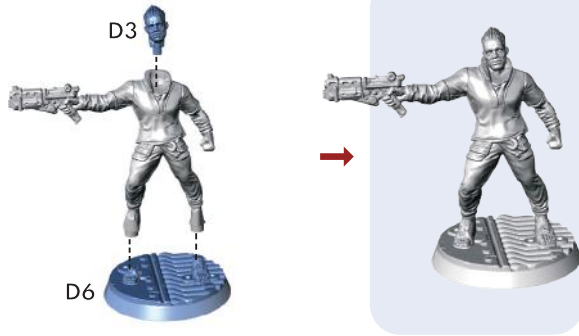
SET ROTH





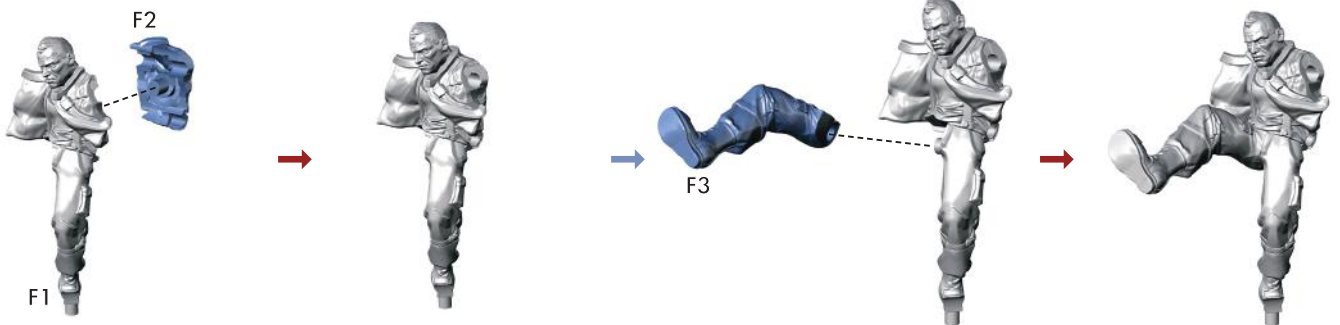
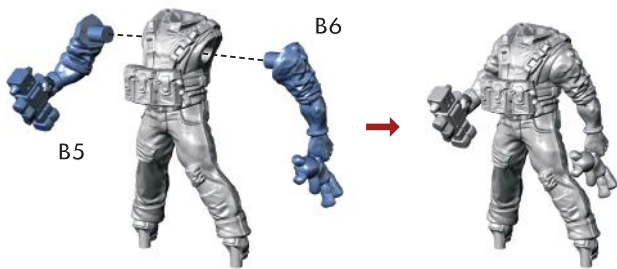
SPRUE NR: WOLF1

BOMBATE



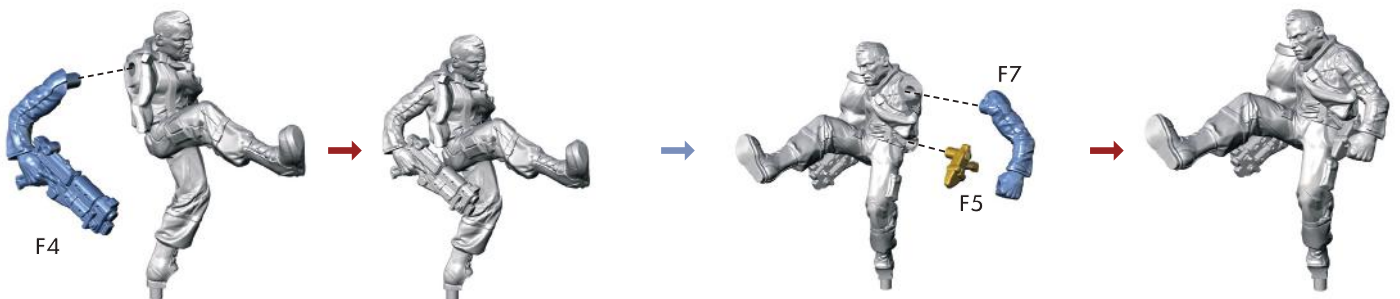
SPRUE NR: WOLF1

MAX HASS



KLAUS KREUTZ

SPRUE NR: WOLF1





F6

SPRUE NR: WOLF1

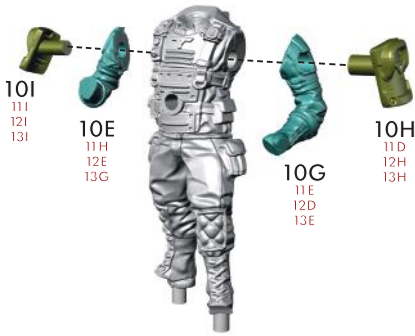


KLAUS KREUTZ



10C
11B, 12C, 13C

10B
11C, 12B, 13B



10I
11I, 12I, 13I

10E
11H, 12E, 13G

10G
11E, 12D, 13E

10H
11D, 12H, 13H



10F
11G, 12F, 13F



SPRUE NR: WOLF0005

SOLDAT A 10-13

10D
11F, 12G, 13D



10A
11A, 12A, 13A



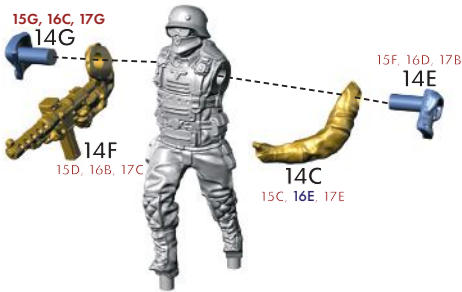
14D
15E, 16A, 17F

14B
15B, 16D, 17D



SPRUE NR: WOLF0005 & WOLF0006

SOLDAT B 14-17



15G, 16C, 17G
14G

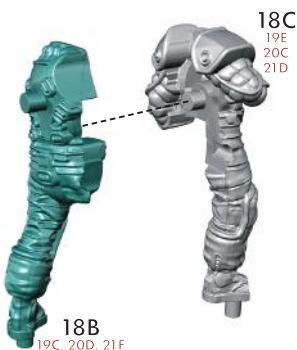
14F
15D, 16B, 17C

14C
15C, 16E, 17E

15F, 16D, 17B
14E



14A
15A, 16F, 17A



18B
19C, 20D, 21F

18C
19E, 20C, 21D

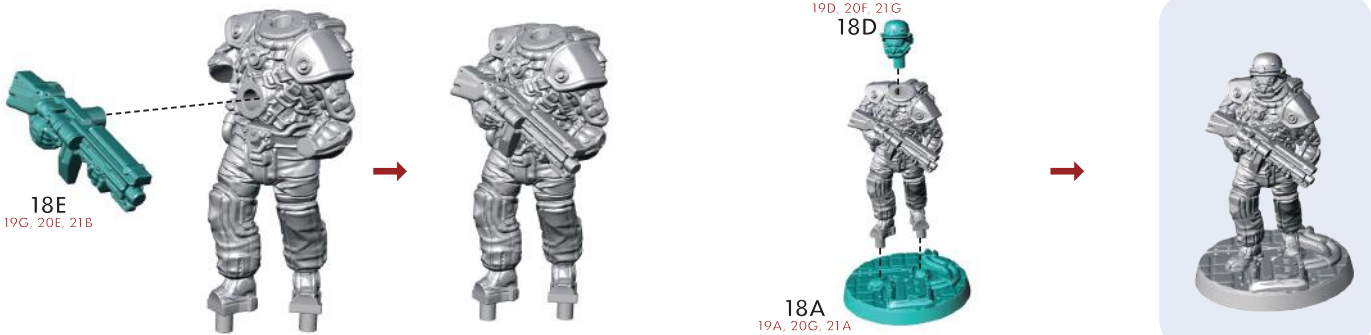


18G
19B, 20A, 21C

18F
19F, 20B, 21E

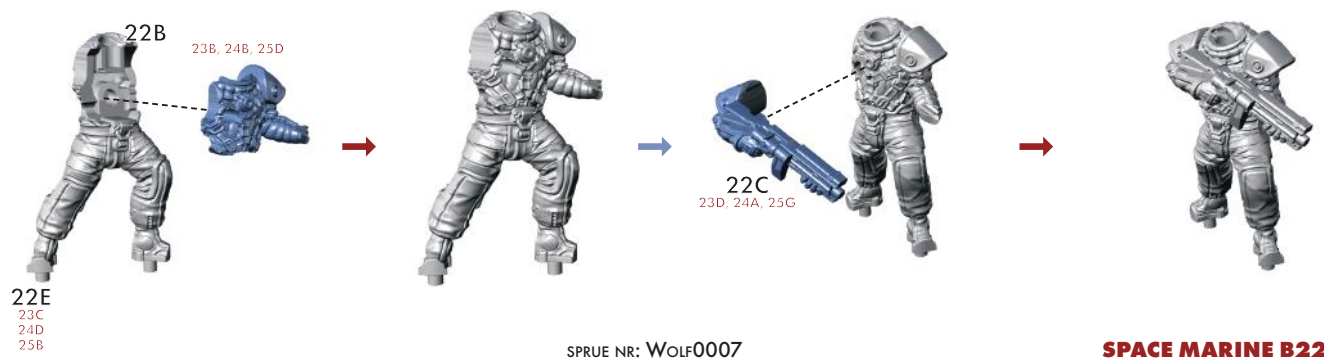


SPACE MARINE A 18-21



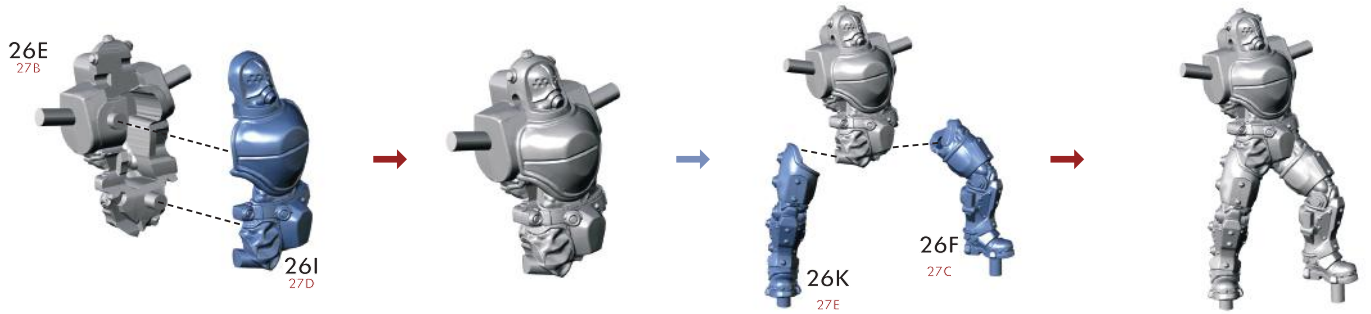
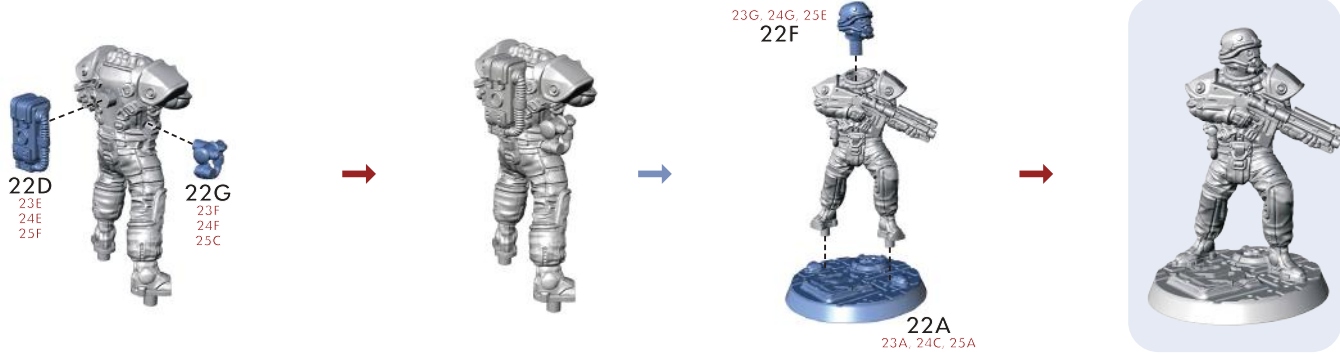
SPRUE NR: WOLF0007

SPACE MARINE A18-21



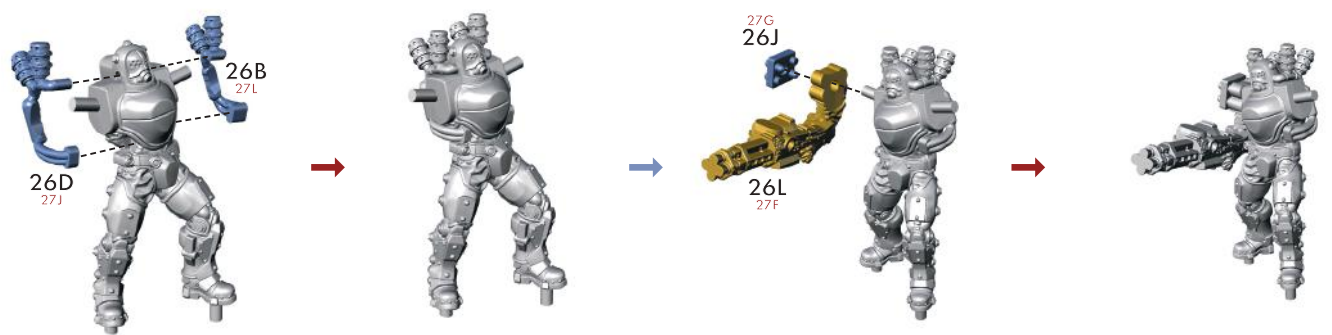
SPRUE NR: WOLF0007

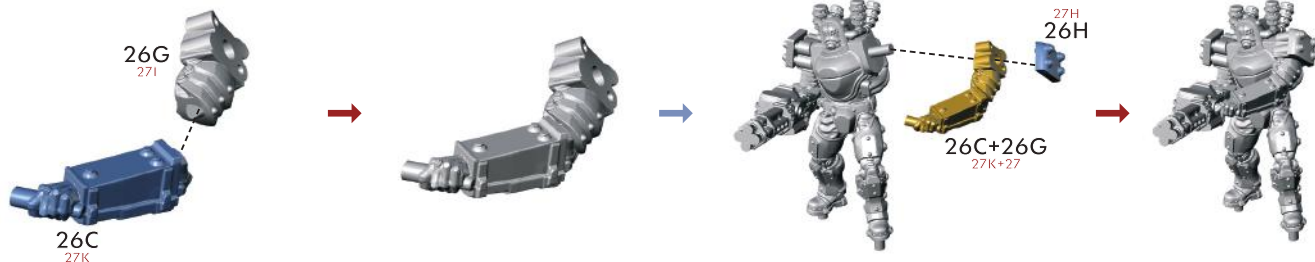
SPACE MARINE B22-25



SPRUE NR: WOLF0006

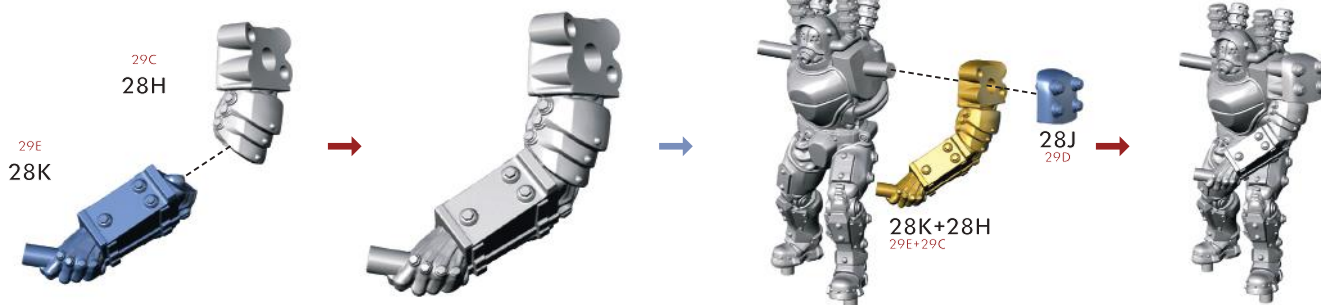
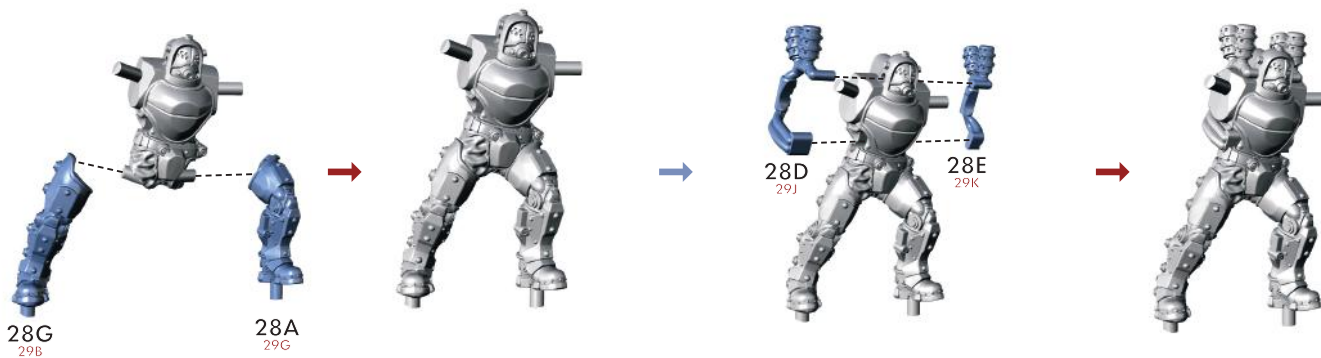
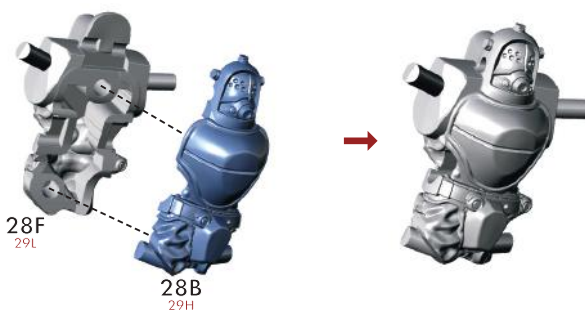
SUPERSOLDAT A26 & A27





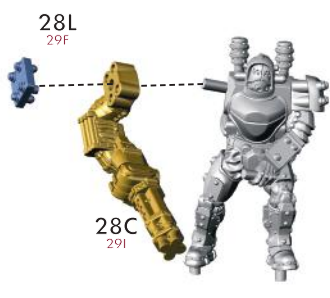
SPRUE NR: Wolf0006

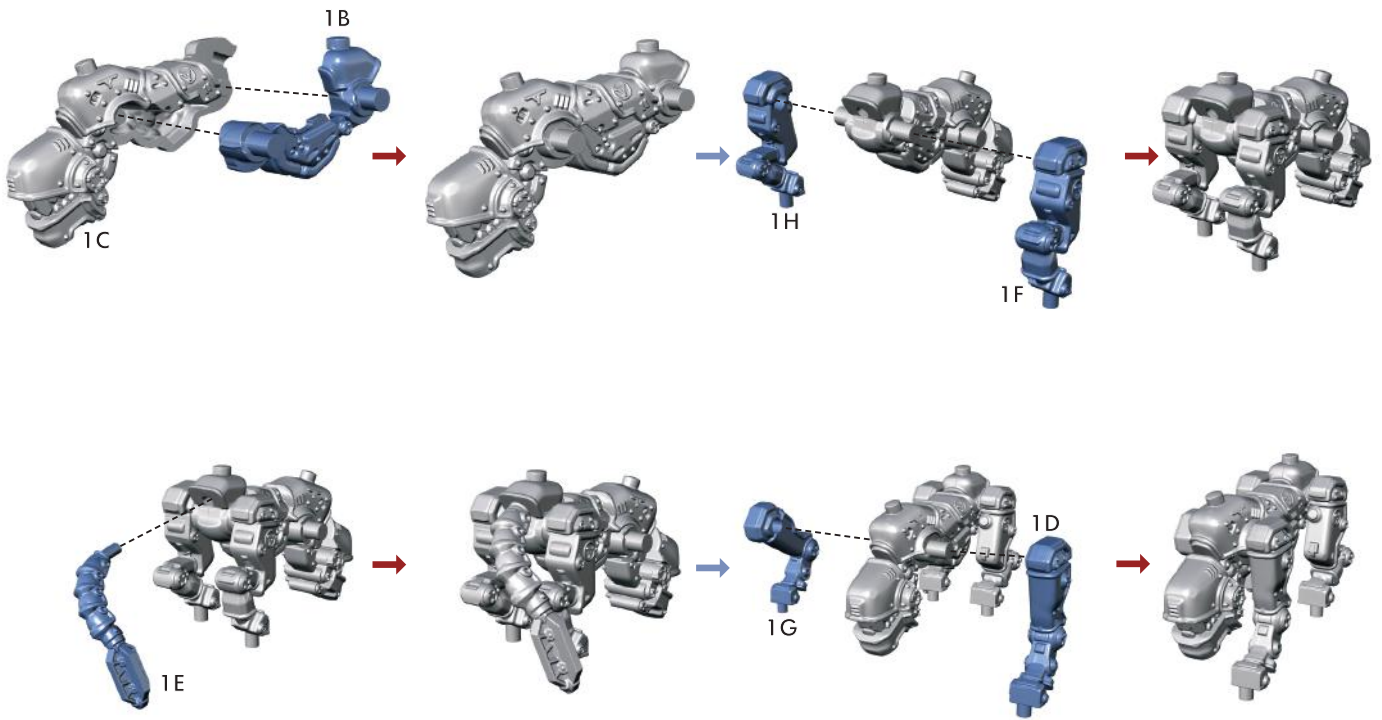
SUPERSOLDAT A26 & A27



SPRUE NR: Wolf0006

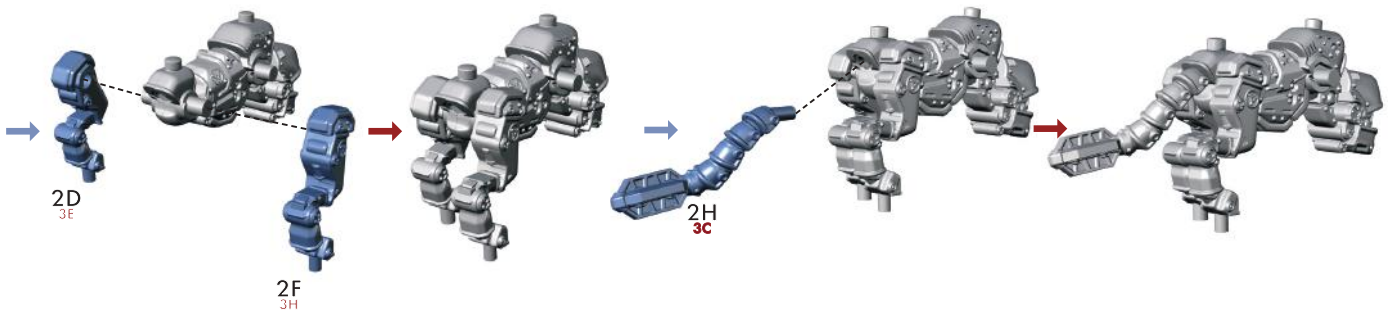
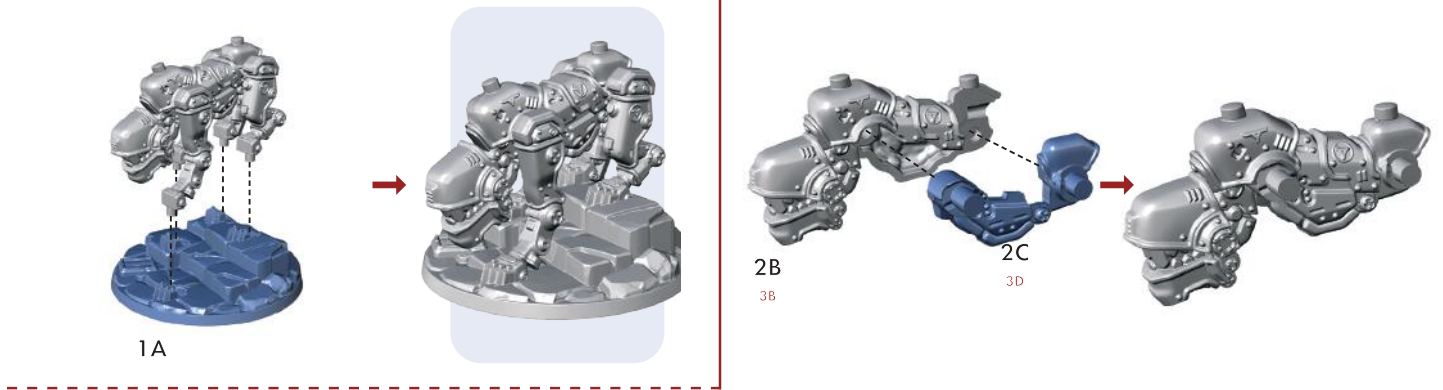
SUPERSOLDAT B28 & B29





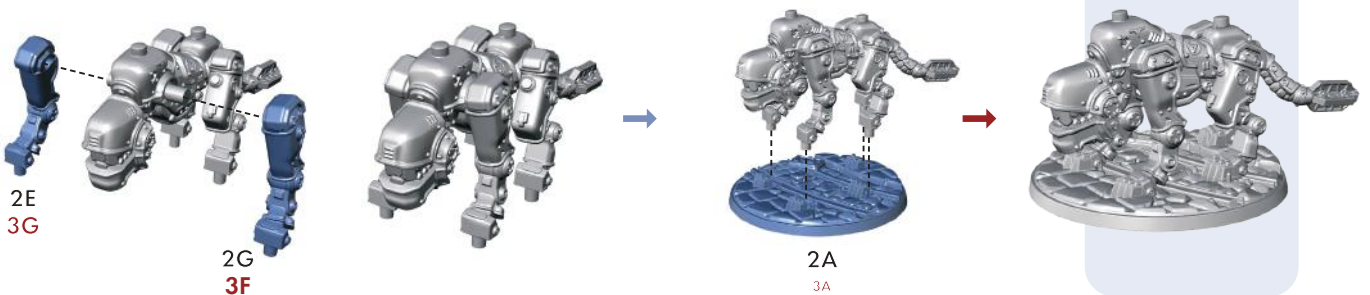
SPRUE NR: Wolf0004

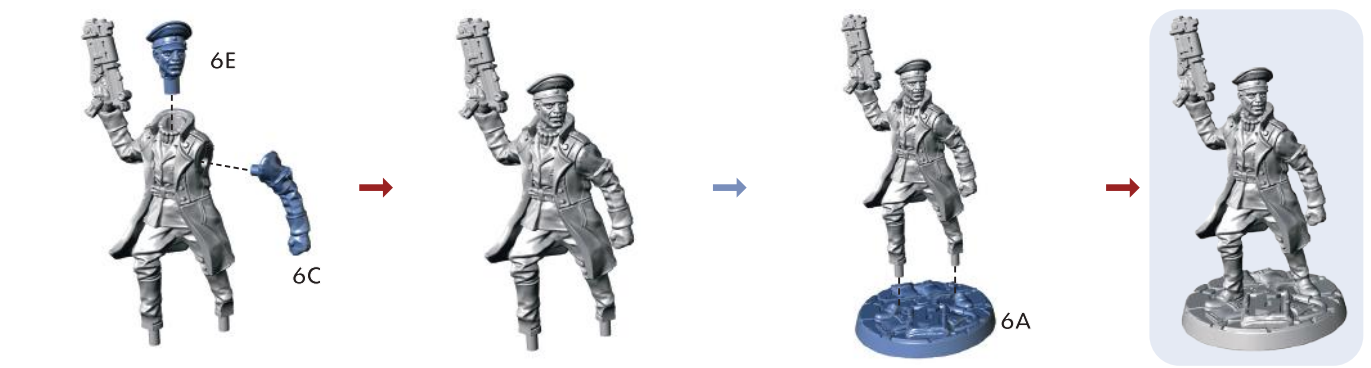
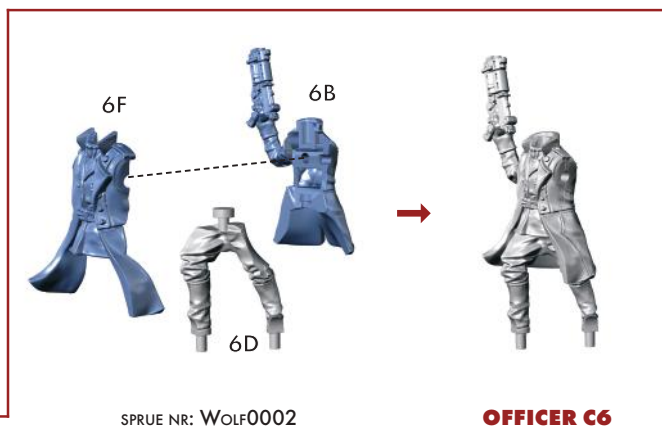
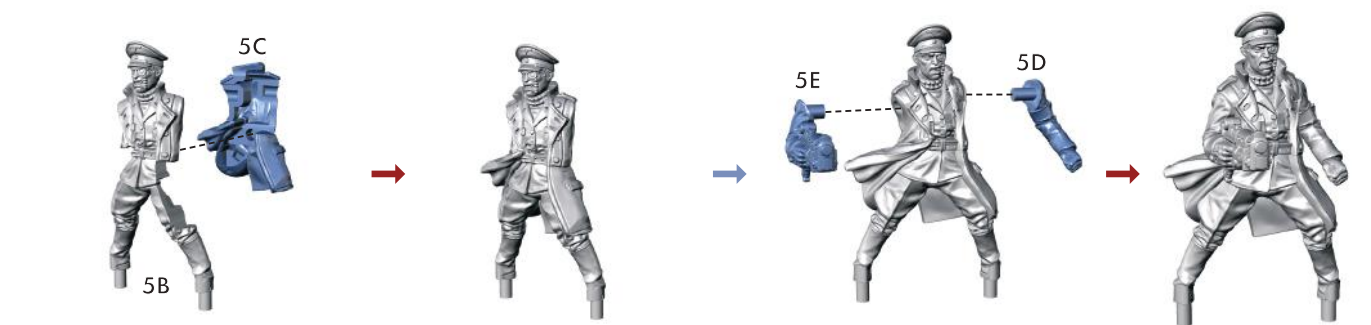
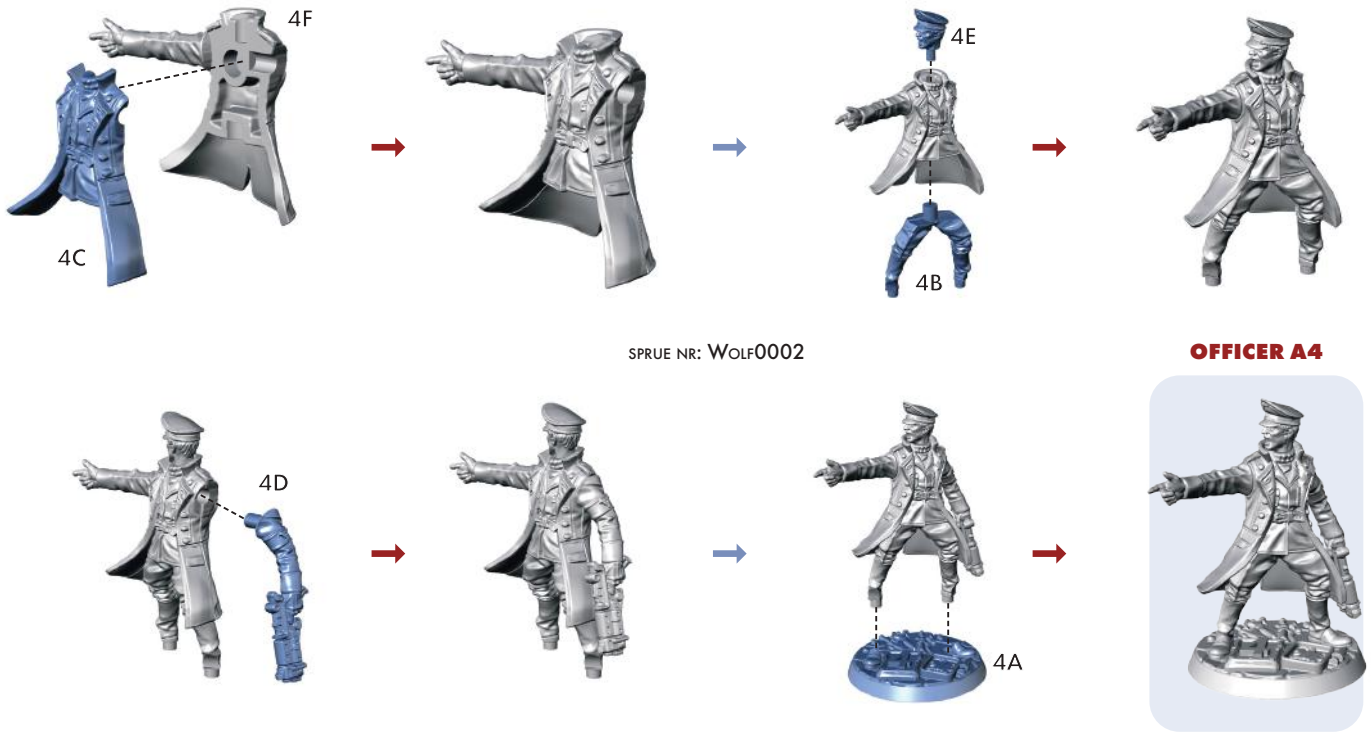
PANZERHUND A1

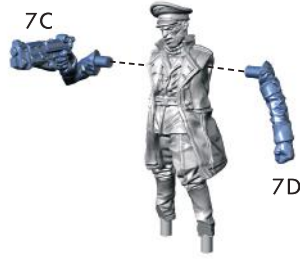


SPRUE NR: Wolf0004

PANZERHUND B2 & B3

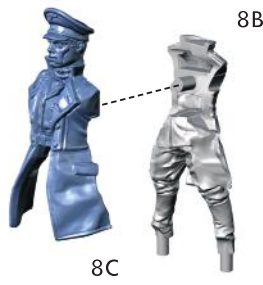






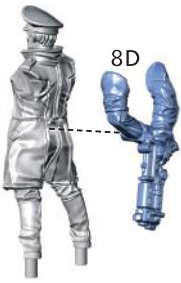
SPRUE NR: WOLF0002

OFFICER D7

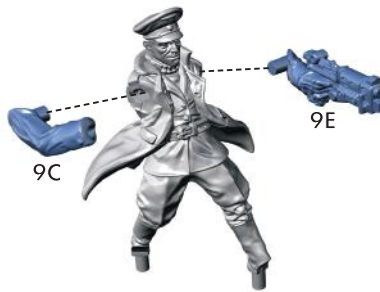


SPRUE NR: WOLF0002

OFFICER E8

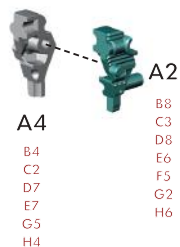


8A



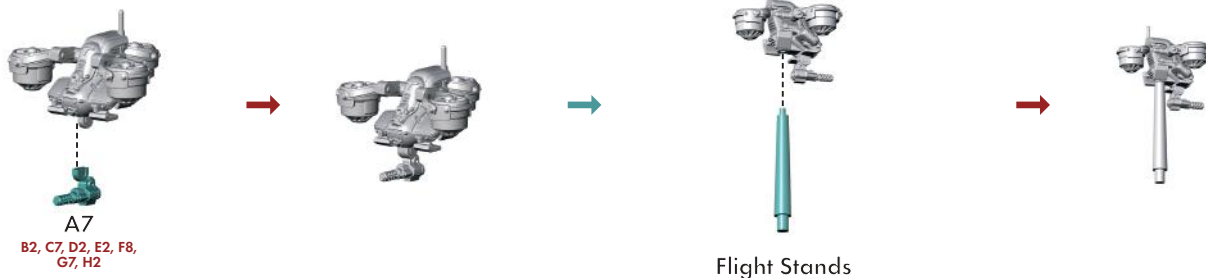
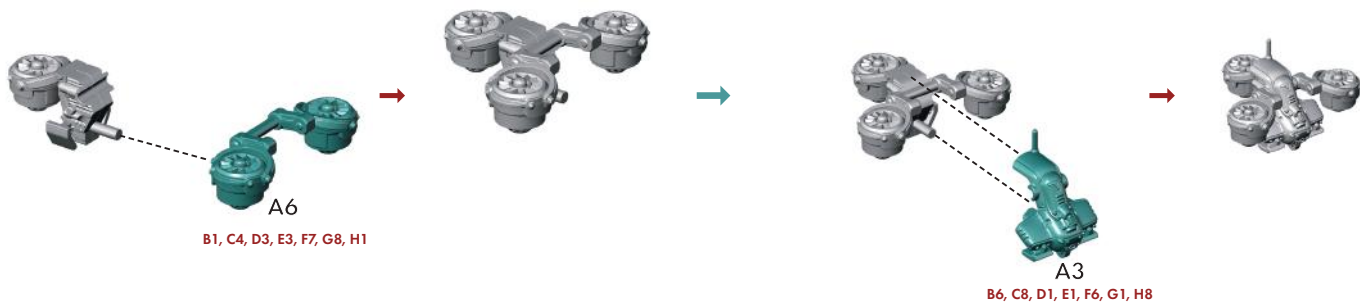
SPRUE NR: WOLF0002

OFFICER F9



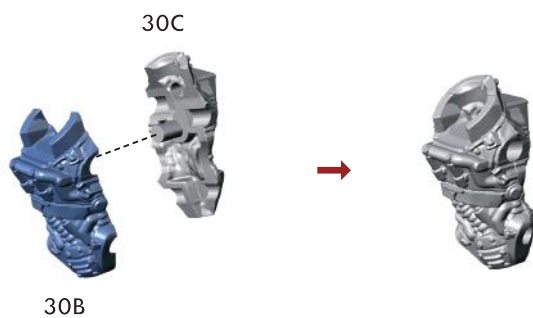
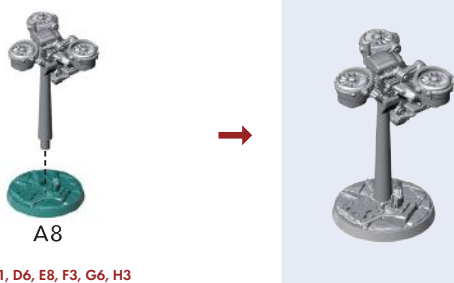


SPRUE NR: WOLF0019 & FLIGHT STANDS



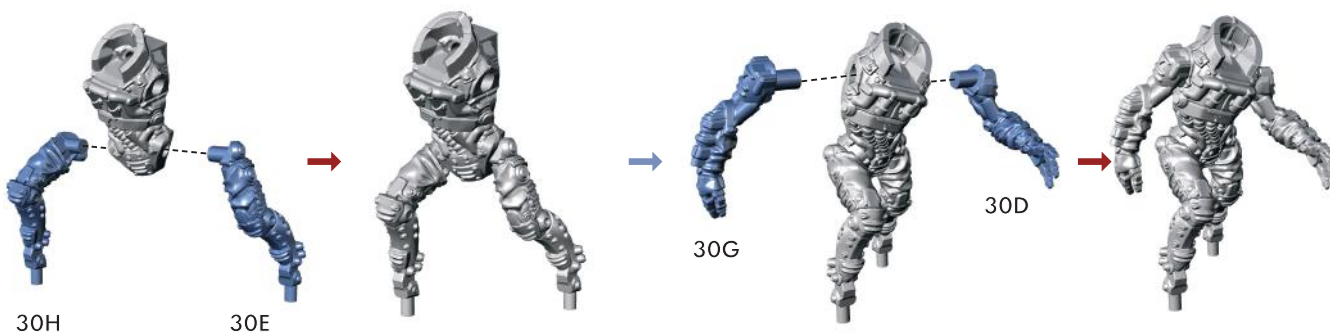
SPRUE NR: WOLF0019 & FLIGHT STANDS

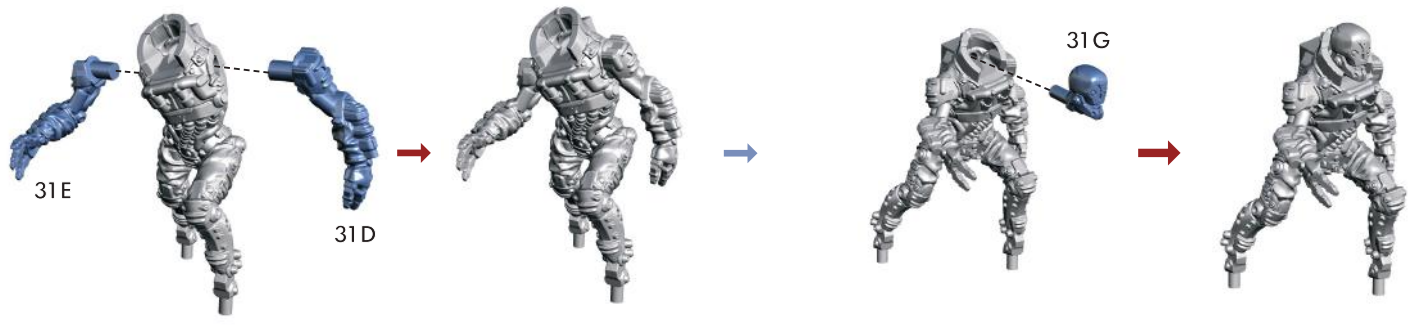
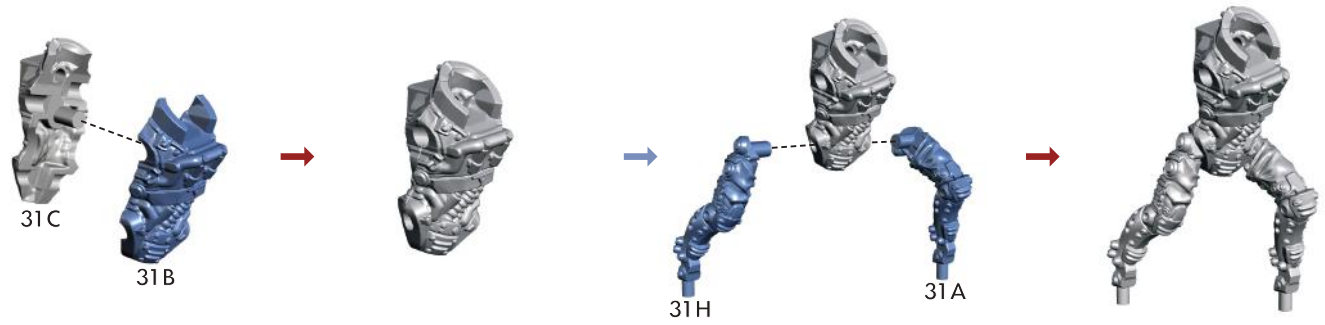
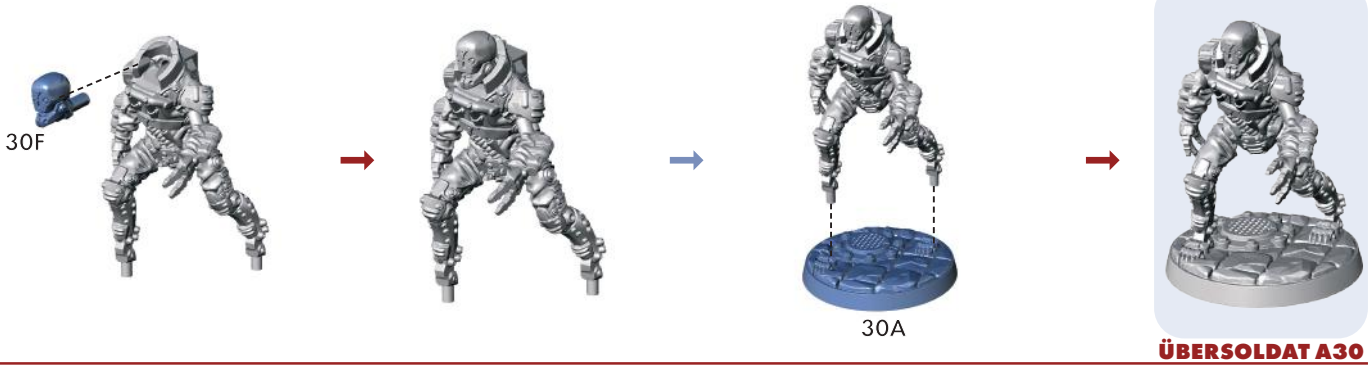
DRONE A34-A37



SPRUE NR: WOLF0013

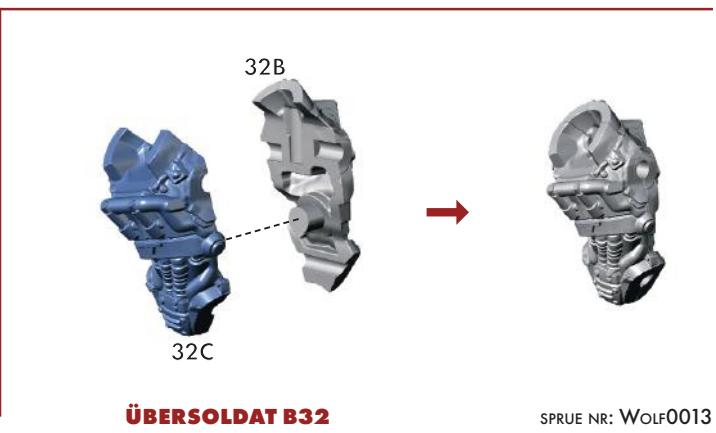
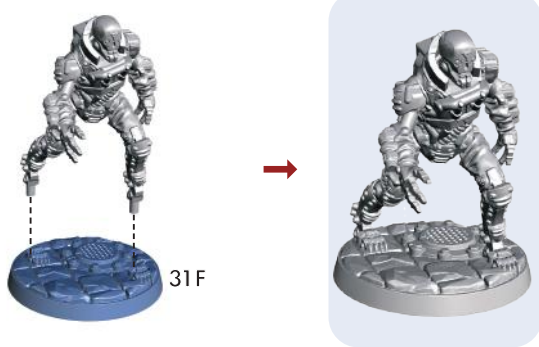
ÜBERSOLDAT A30



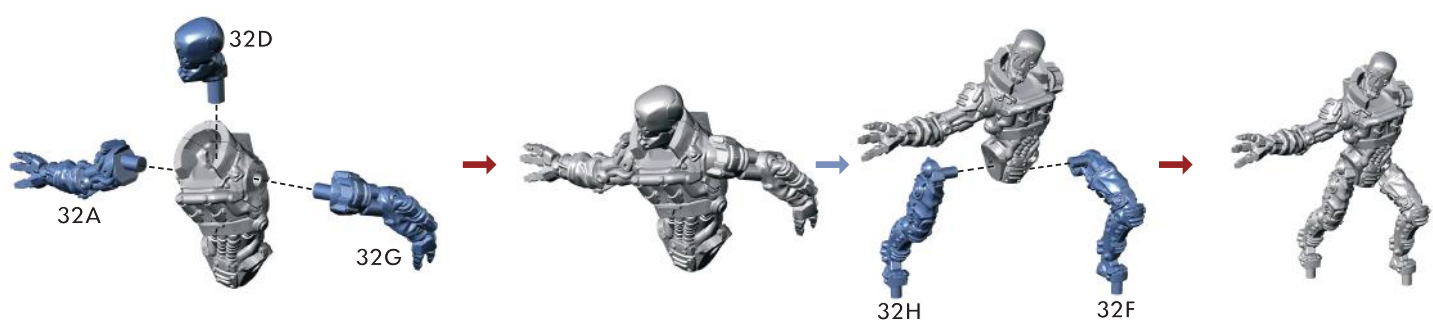


SPRUE NR: WOLF0013

ÜBERSOLDAT A31



SPRUE NR: WOLF0013



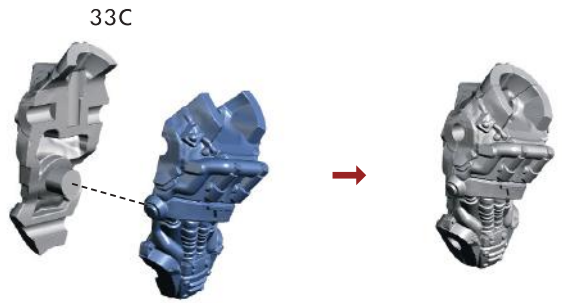


32E

SPRUE NR: WOLF0013

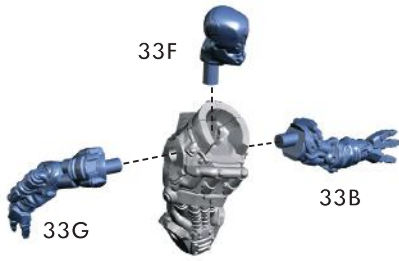


ÜBERSOLDAT B32



33C

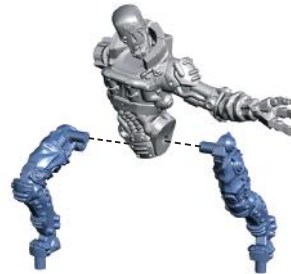
33E



33F

33G

33B



33H

33D

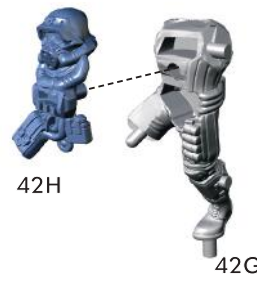


SPRUE NR: WOLF0013 & WOLF0007

ÜBERSOLDAT B33



33A

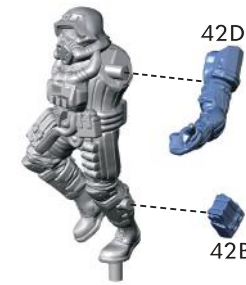


42H

42G



42I



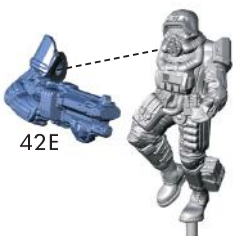
42D

42B

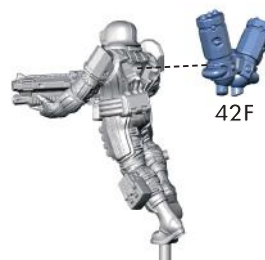


SPRUE NR: WOLF0013

FIRE TROOPER A42

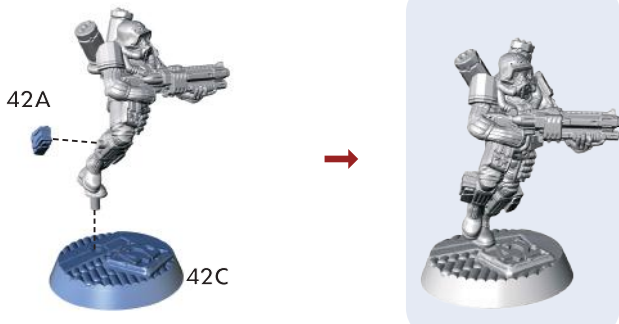


42E



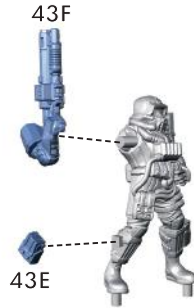
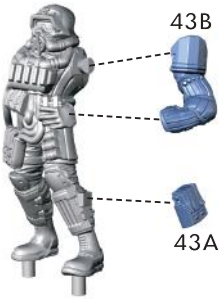
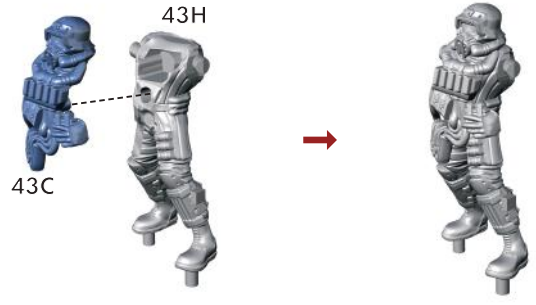
42F





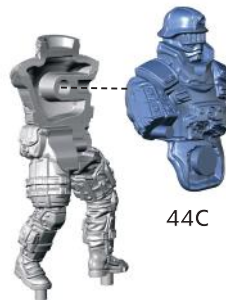
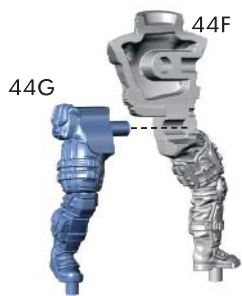
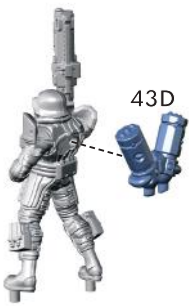
SPRUE NR: WOLF0013

FIRE TROOPER A42



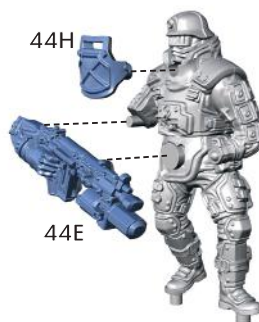
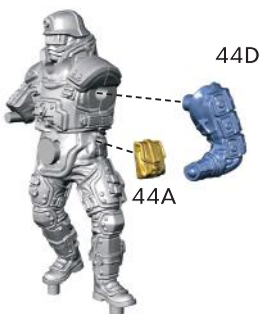
SPRUE NR: WOLF0013

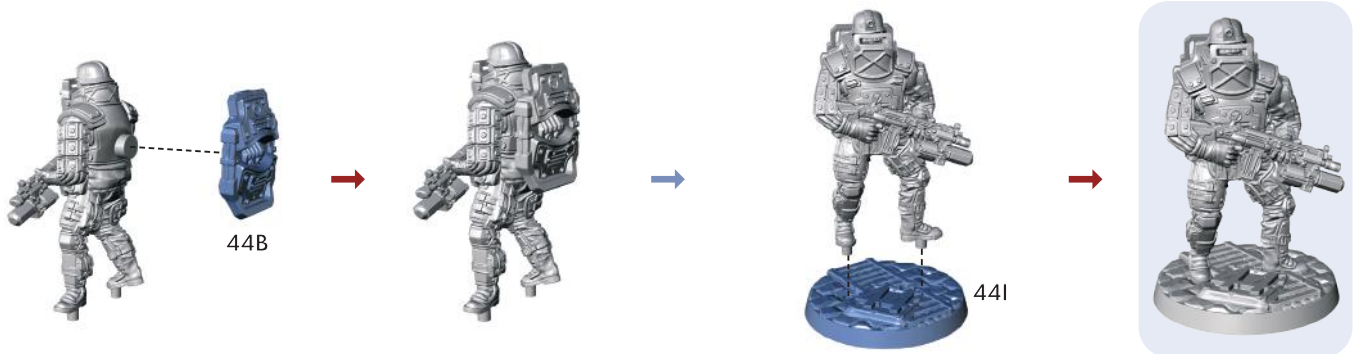
FIRE TROOPER B43



SPRUE NR: WOLF0013

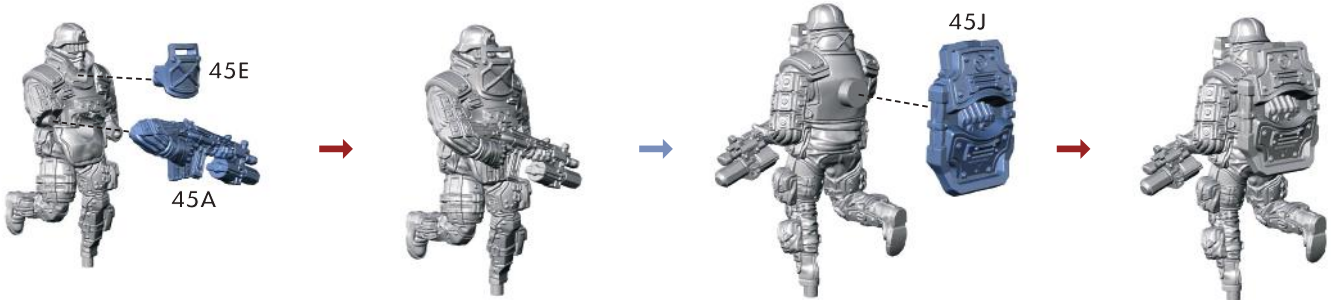
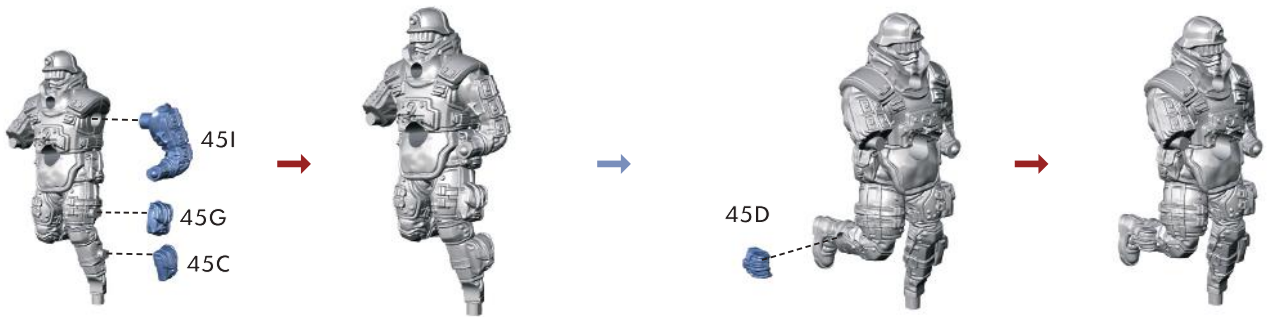
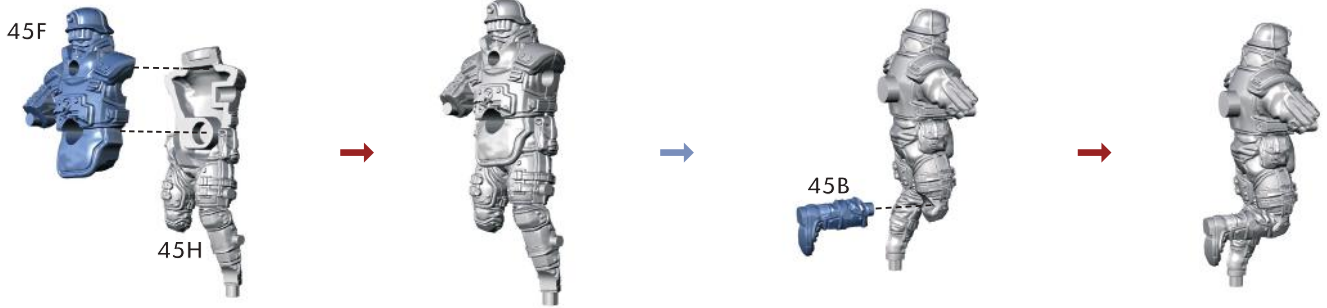
ROCKET TROOPER A44





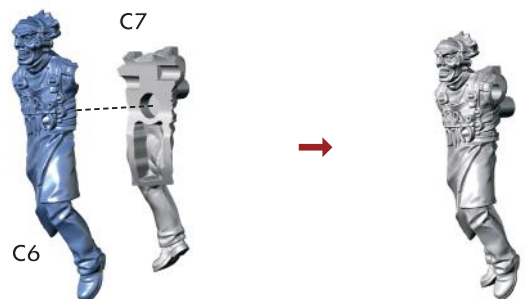
SPRUE NR: Wolf0013

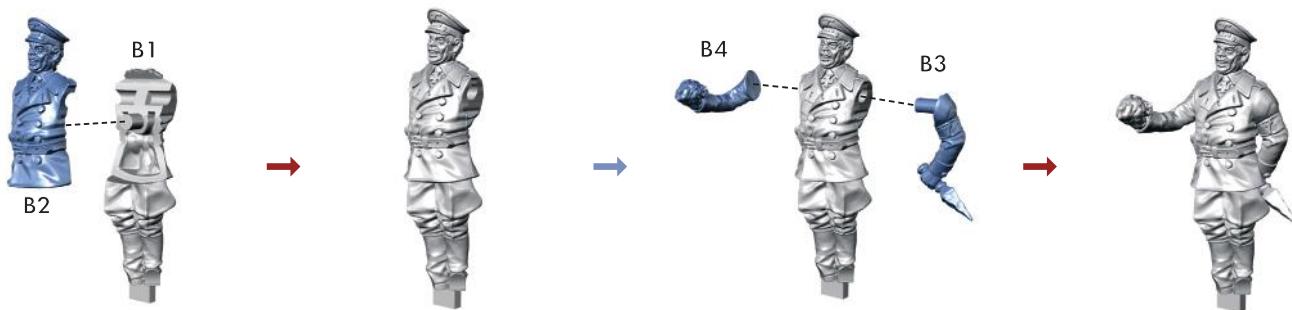
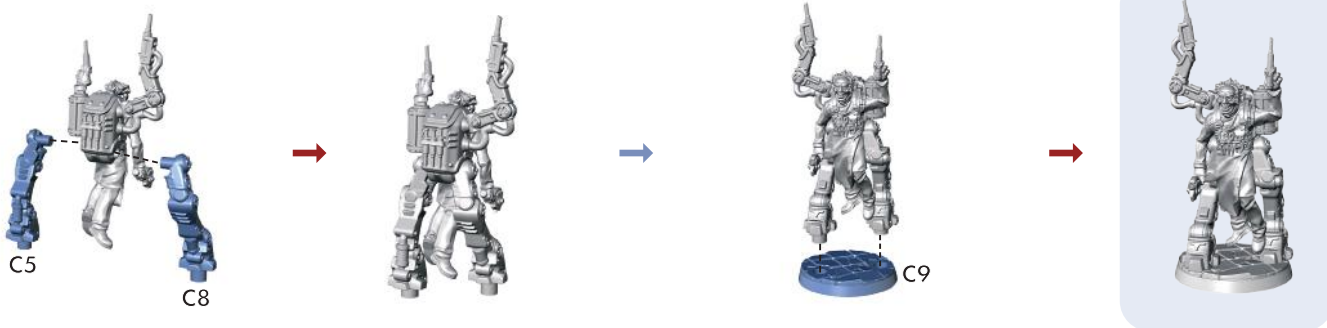
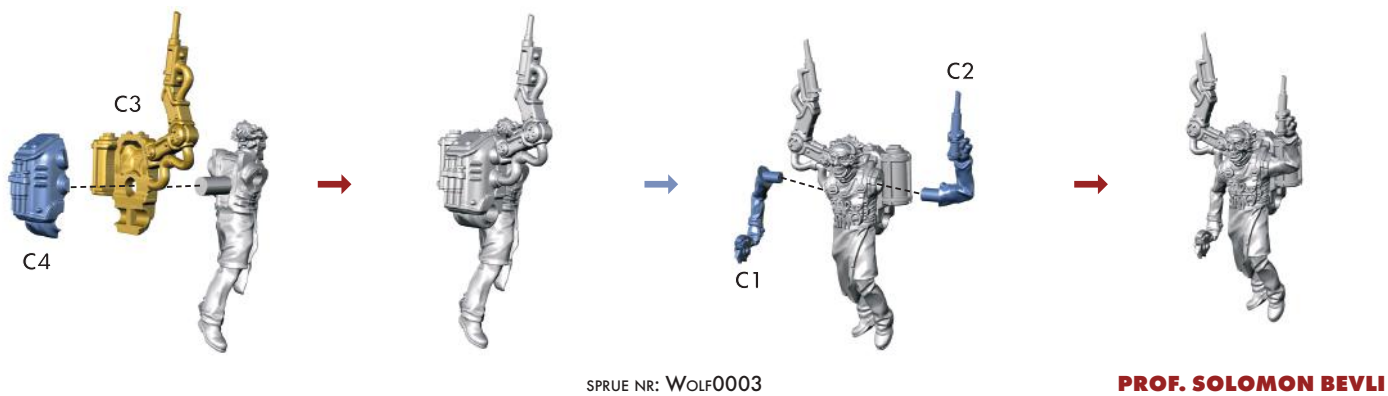
ROCKET TROOPER A44



SPRUE NR: Wolf0013

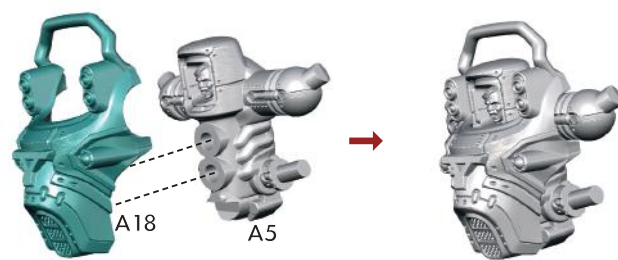
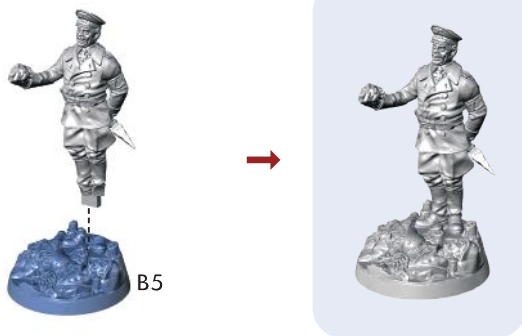
ROCKET TROOPER B45



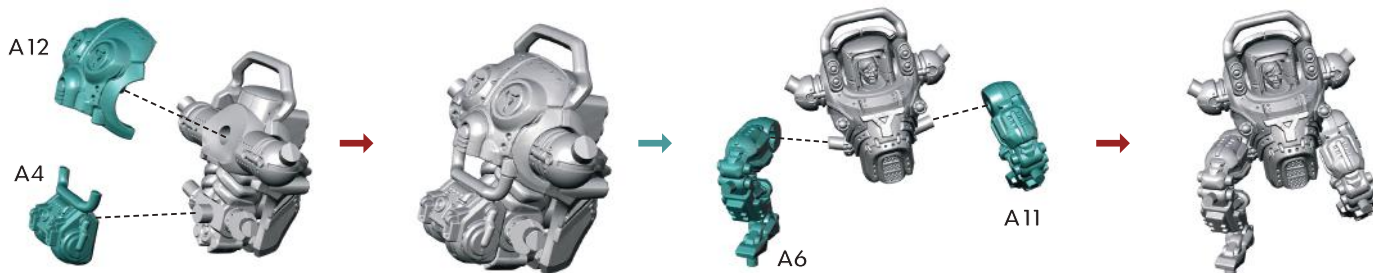


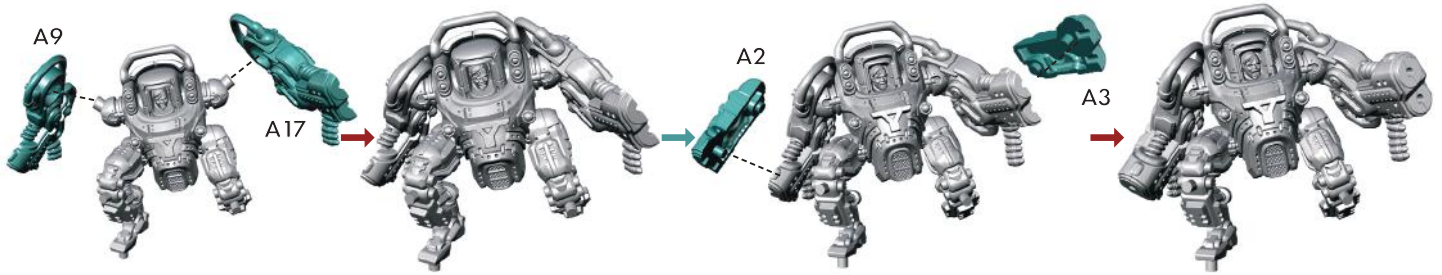
SPRUE NR: Wolf0003

GEN. OSCAR VON GRIM

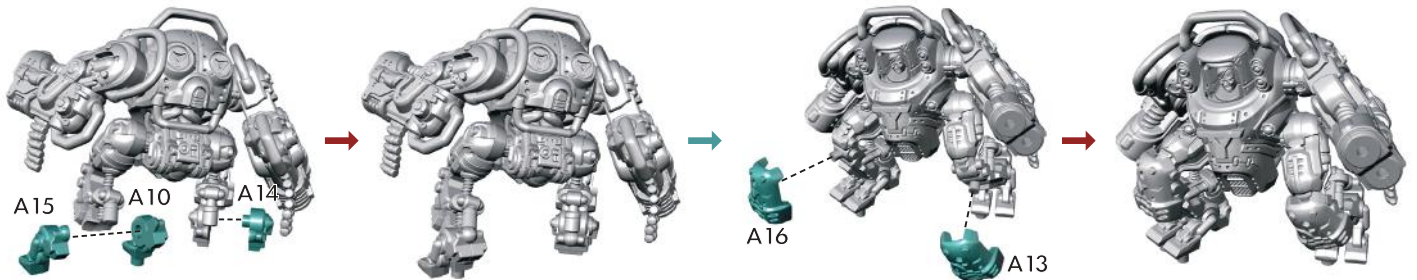


SPRUE NR: Wolf0003

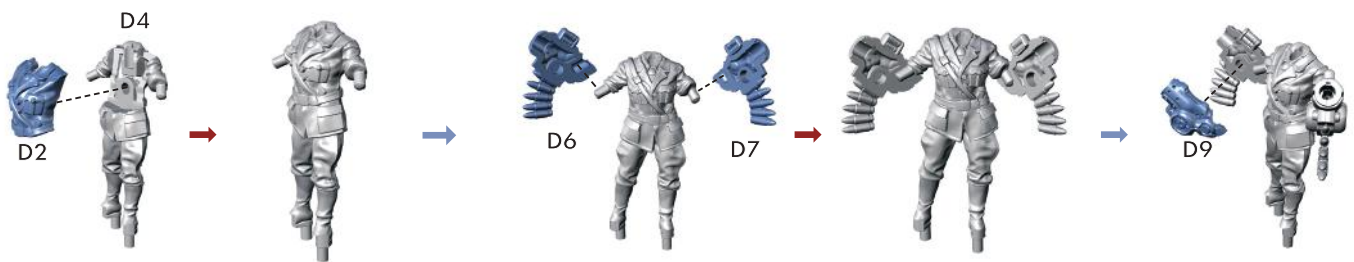
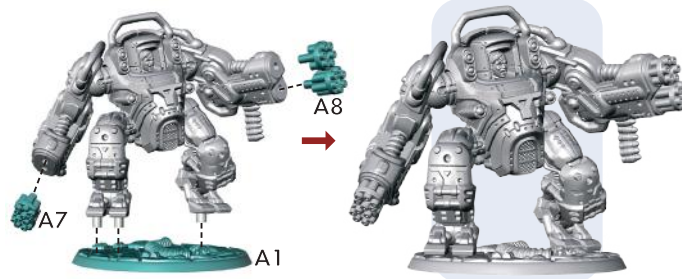




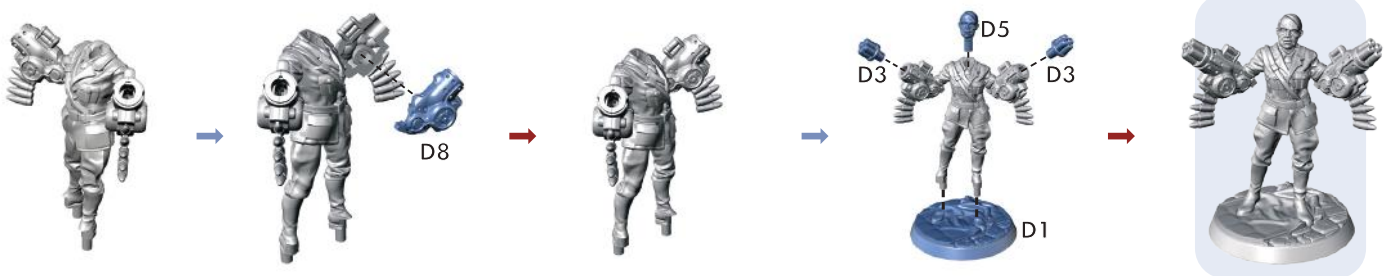
SPRUE NR: Wolf0003



MECHA-HITLER



SPRUE NR: Wolf0002



ADOLF HITLER

© 2021 Bethesda Softworks LLC, a ZeniMax Media company.

Wolfenstein, id, Bethesda and related logos are registered trademarks or trademarks of ZeniMax Media Inc. and/or its affiliates in the U.S. and/or other countries. Archon Studio and the Archon Studio logo are TMs of Archon Spółka z o.o. Archon Studio is a © of Archon Studio. All rights reserved to their respective owners. Archon Studio is located at Warsztatowa 8 Street, Piła, 64-920, Poland. Actual components may vary from those shown. Printed components: Made in China. Miniatures: Made in Poland.