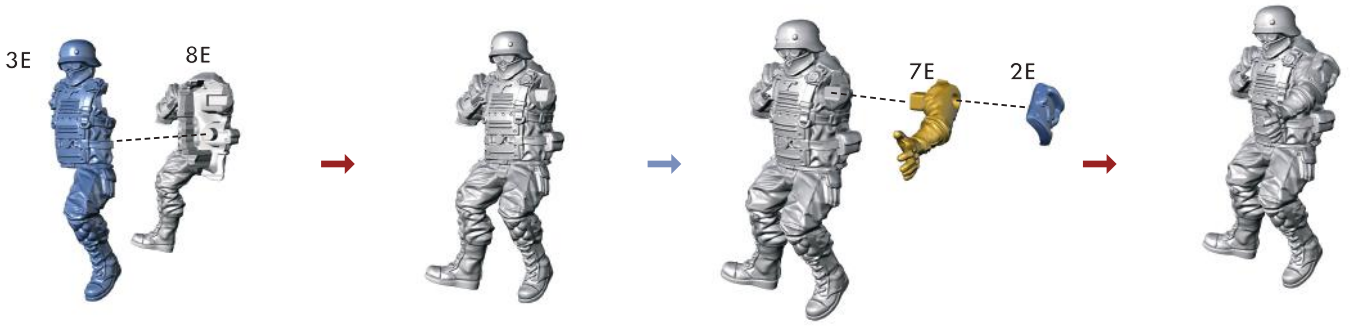
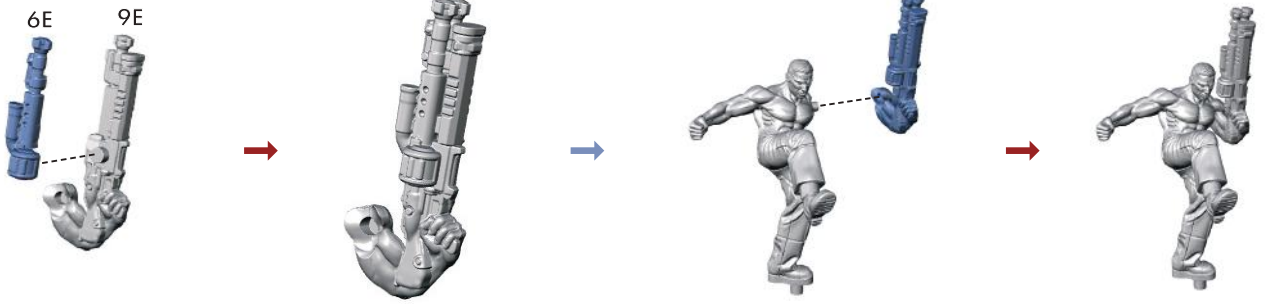
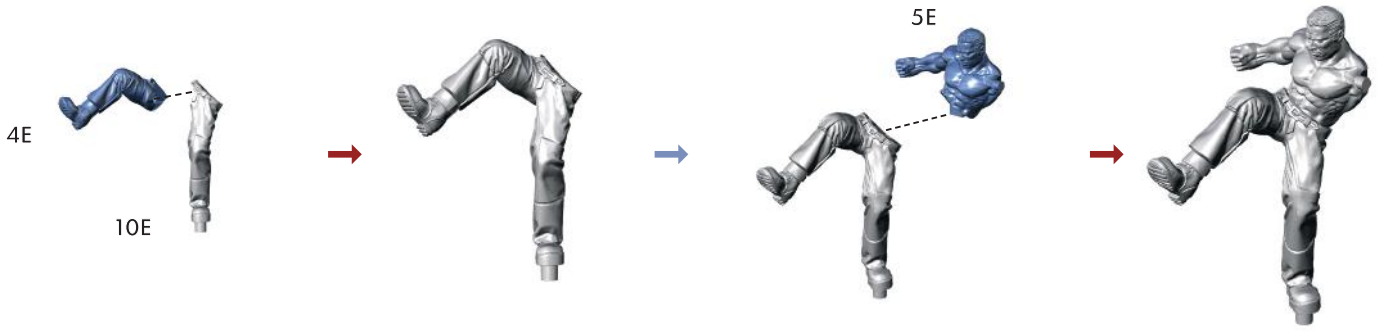


Wolfenstein[®]

THE

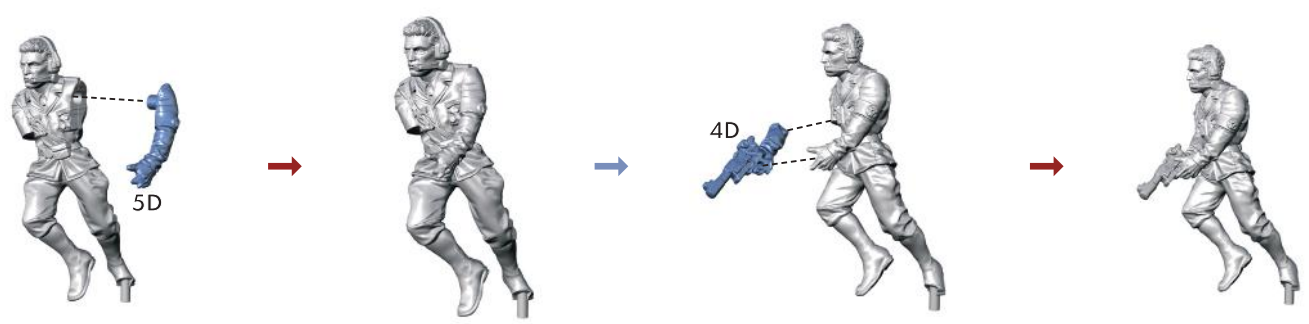
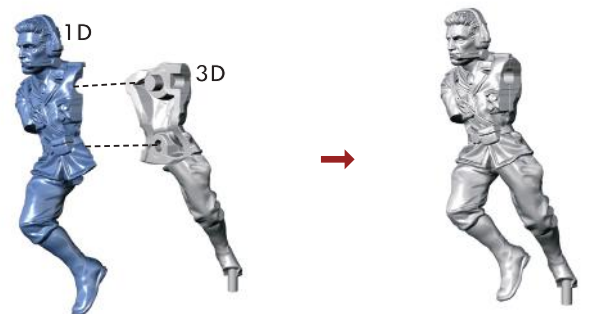
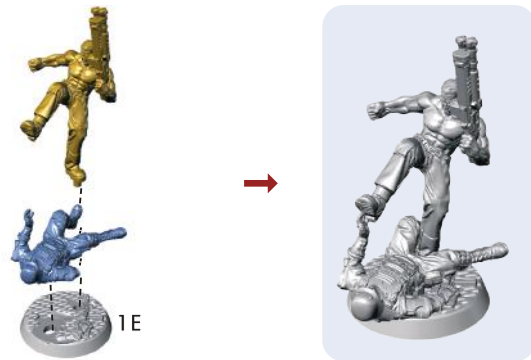
**OLD
BLOOD[™]**

**MODELS
ASSEMBLING
MANUAL**



SPRUE NR: Wolf0008

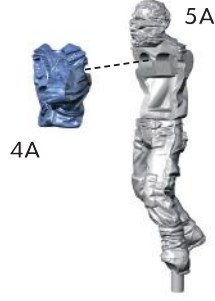
B. J. BLAZKOWICZ



SPRUE NR: WOLF0008

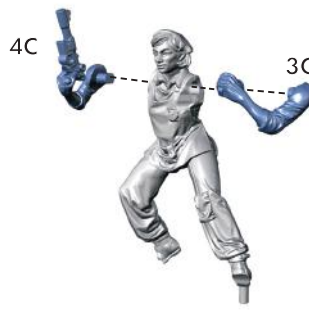
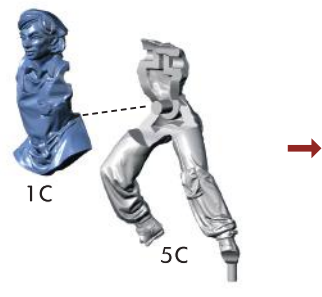
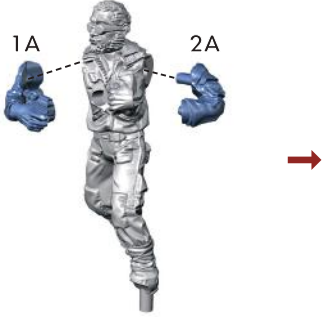


RICHARD WESLEY



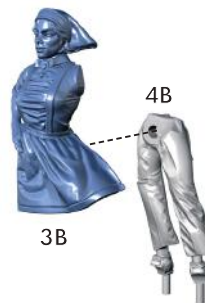
SPRUE NR: WOLF0008

LUDWIG KESSLER



SPRUE NR: WOLF0008

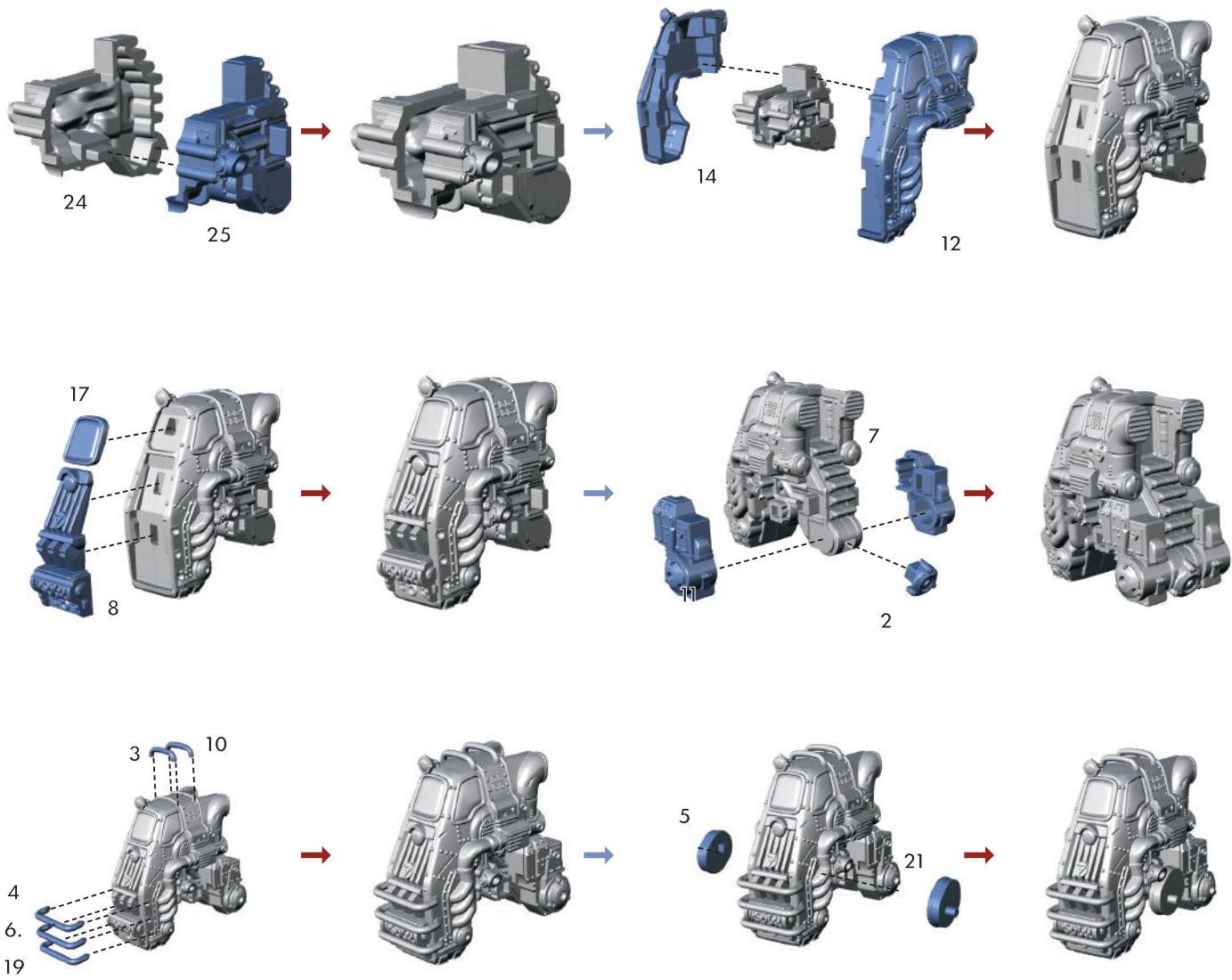
ANETTE KRAUSE



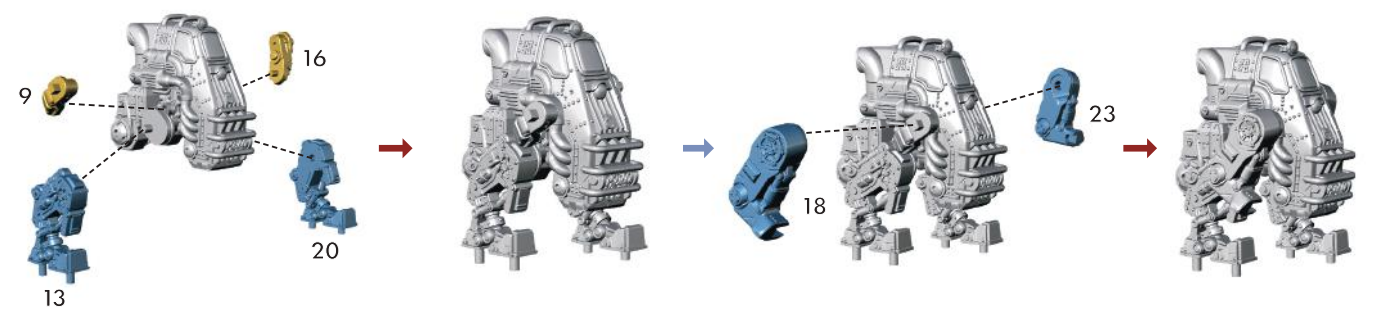
SPRUE NR: WOLF0008

PIPPA SHEPHERD

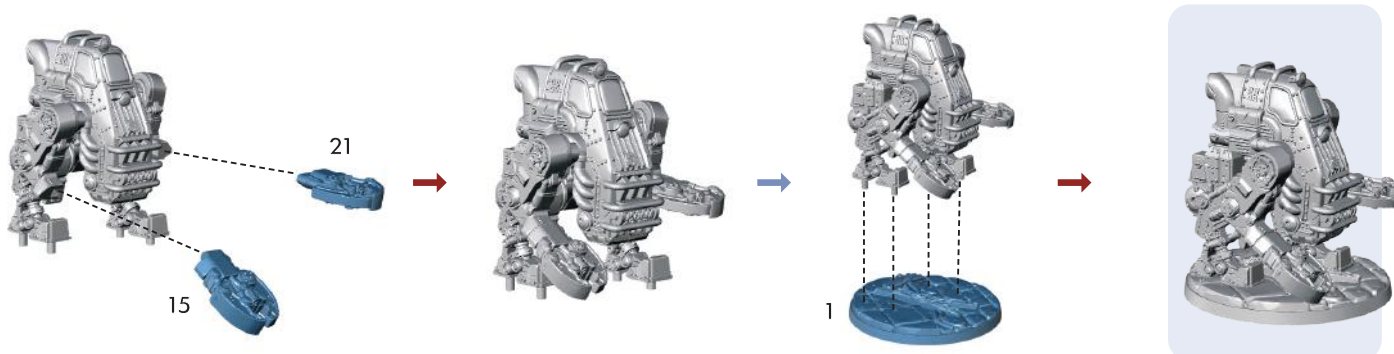


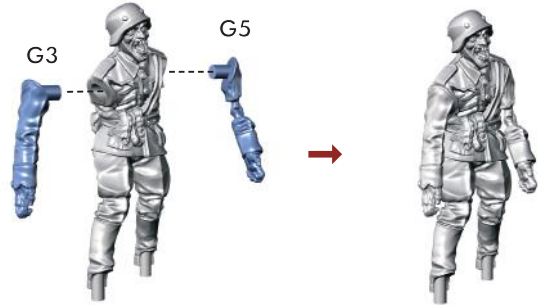
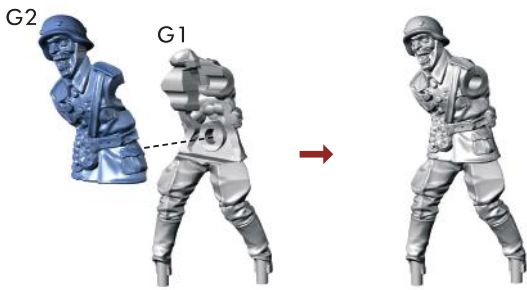


SPRUE NR: WOLF00010



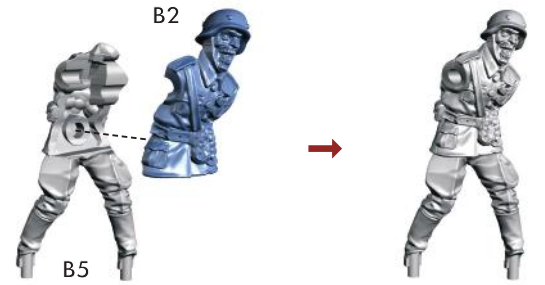
LADEROBOTER





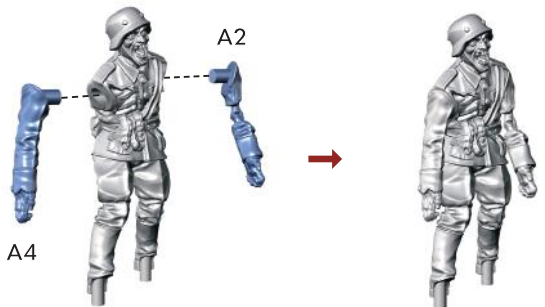
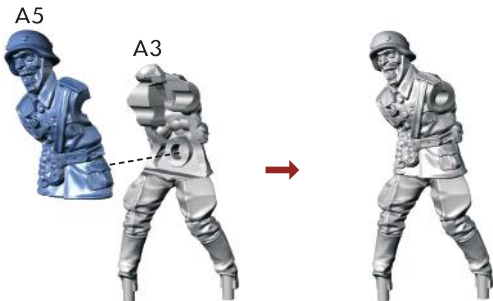
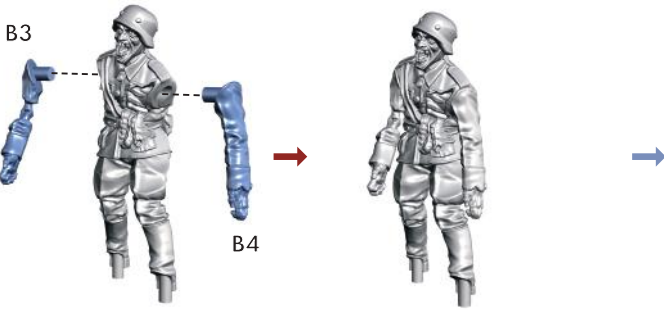
SPRUE NR: WOLF0009

SHAMBLER A 46



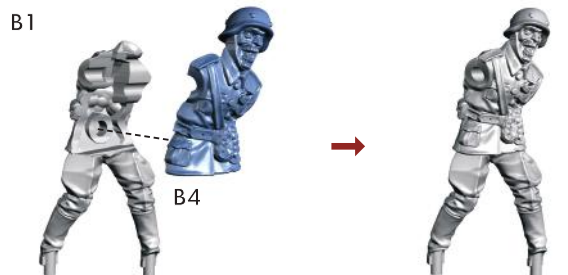
SPRUE NR: WOLF00011

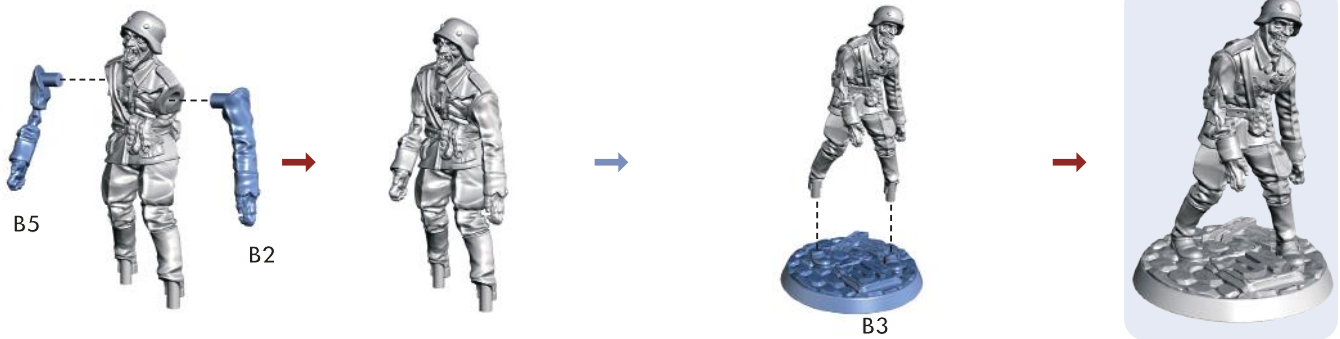
SHAMBLER A 47



SPRUE NR: WOLF0009

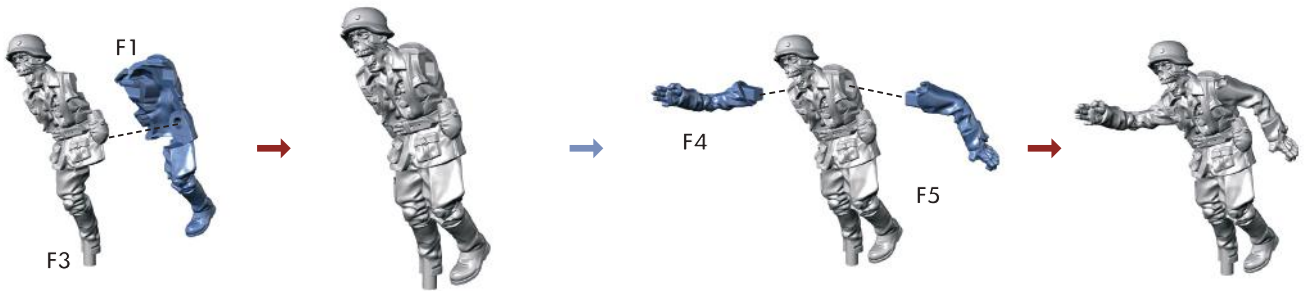
SHAMBLER A 48





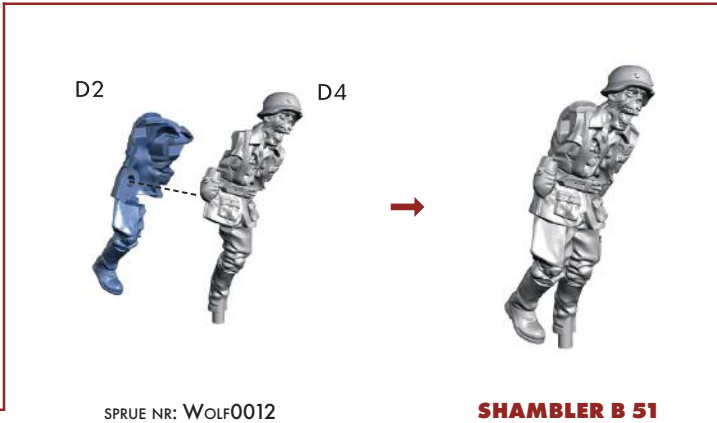
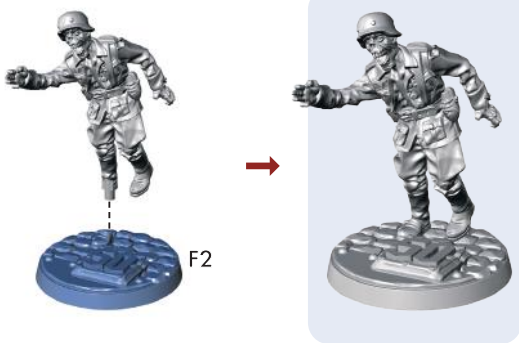
SPRUE NR: WOLF0012

SHAMBLER A 49



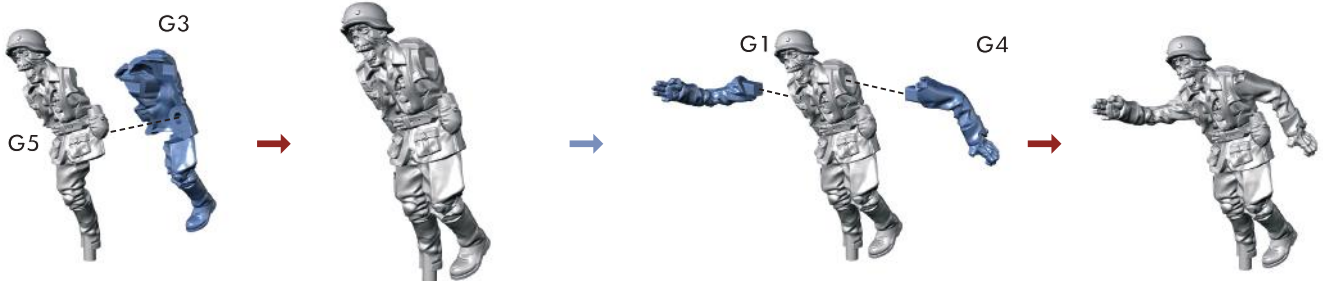
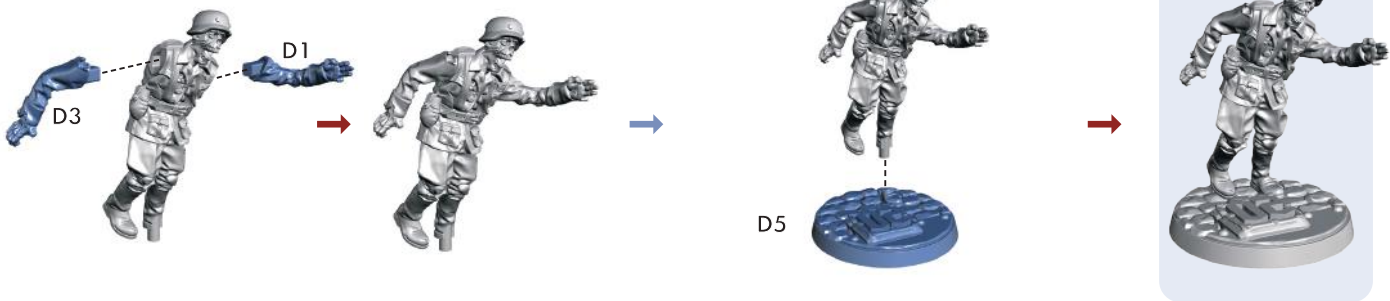
SPRUE NR: WOLF0012

SHAMBLER B 50



SPRUE NR: WOLF0012

SHAMBLER B 51



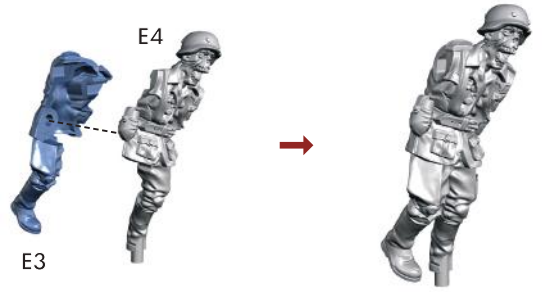


G2



SPRUE NR: WOLF0012

SHAMBLER B 52

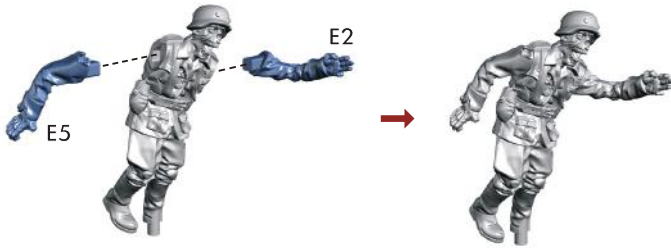


E3

E4

SPRUE NR: WOLF0012

SHAMBLER B 53

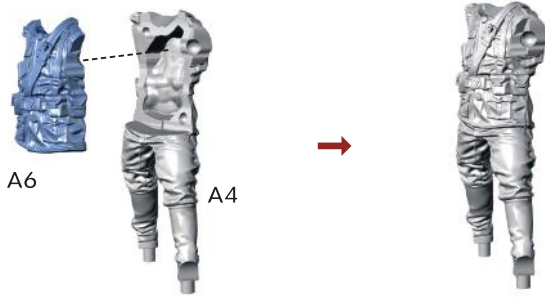


E5

E2

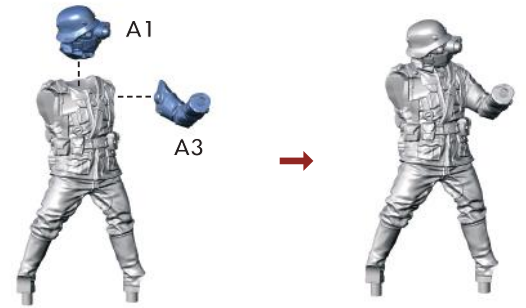


E1



A6

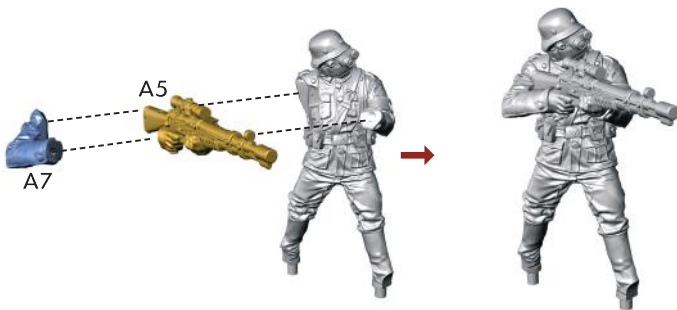
A4



A1

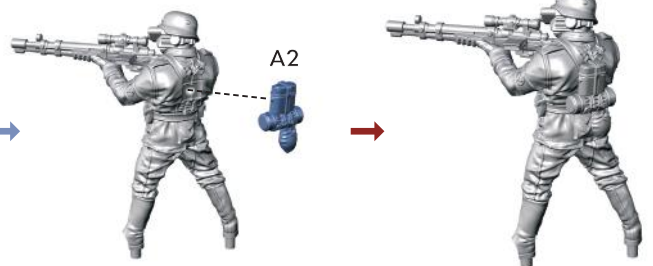
A3

SPRUE NR: WOLF0009



A5

A7

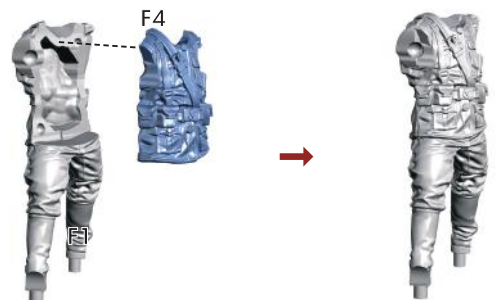


A2

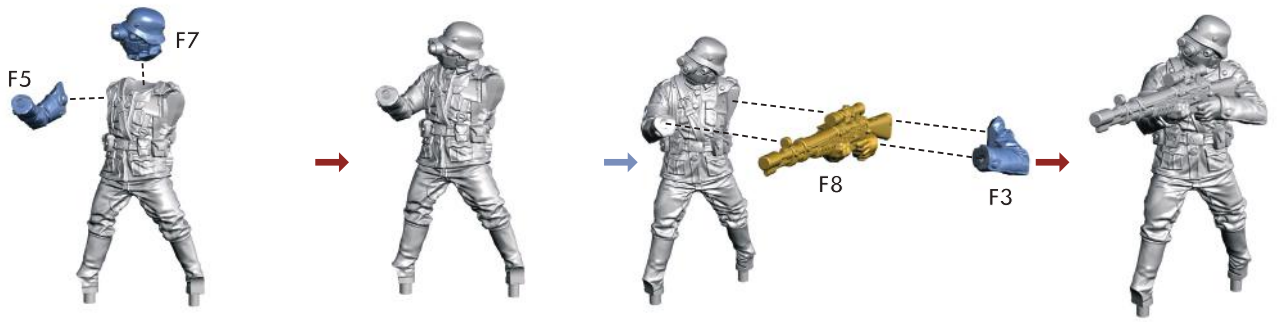
MARKSMAN A 58



A8

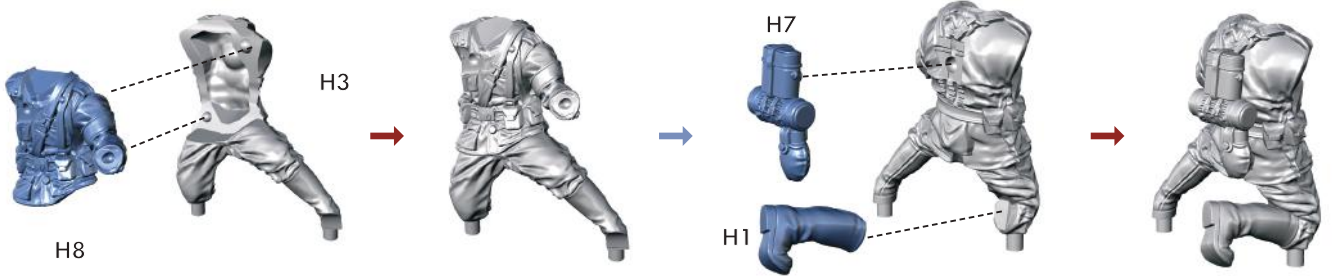
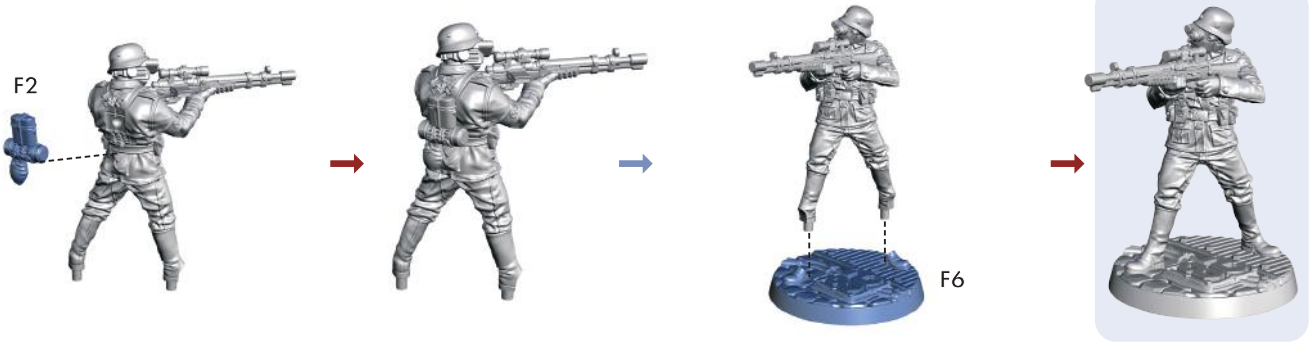


F4



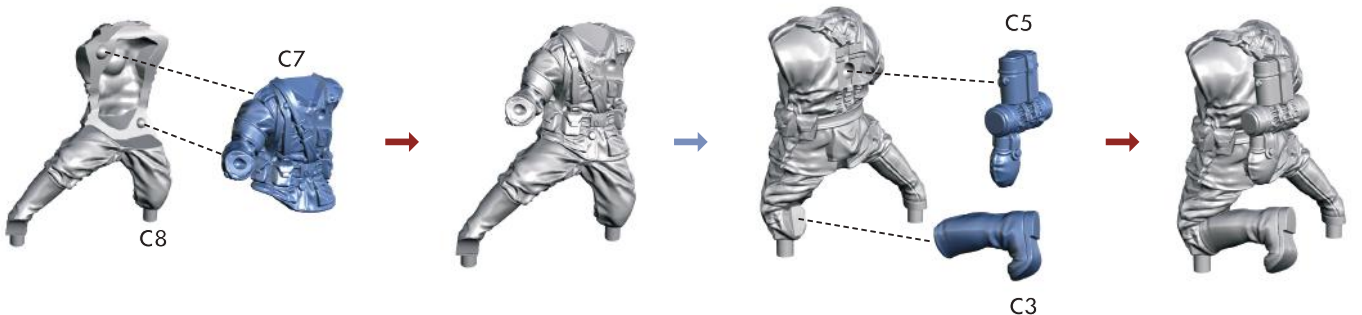
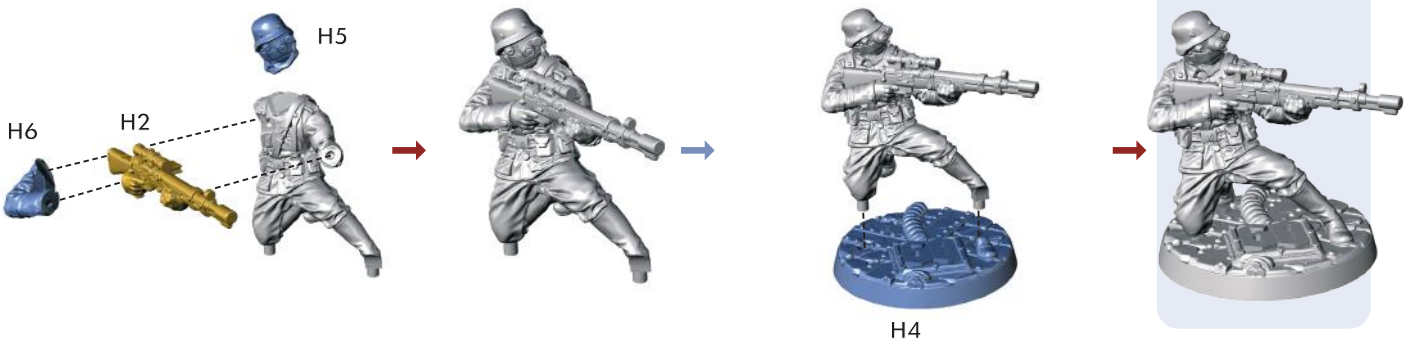
SPRUE NR: WOLF0009

MARKSMAN A 59

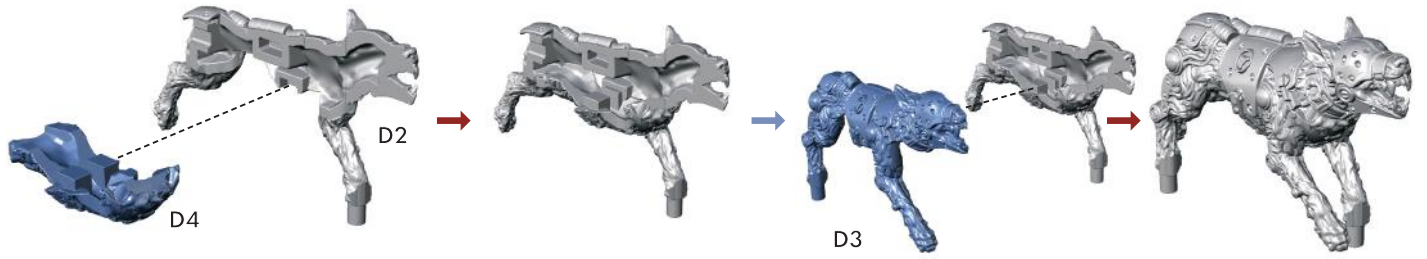
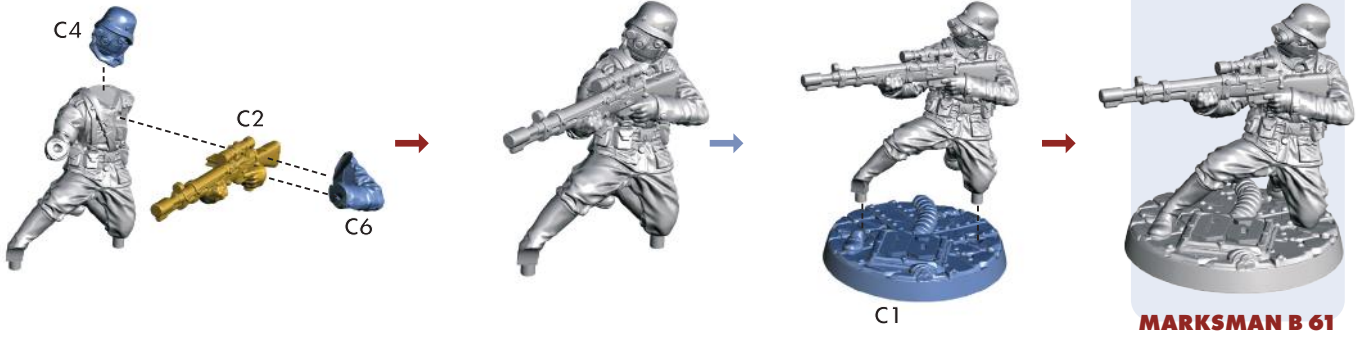


SPRUE NR: WOLF0012

MARKSMAN B 60

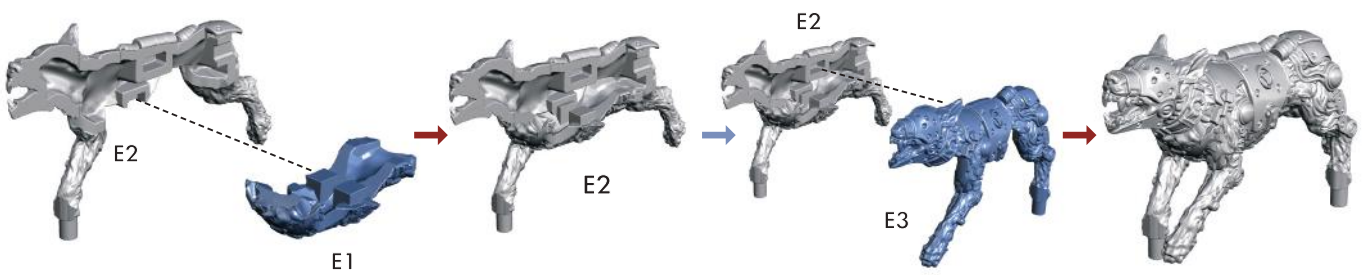
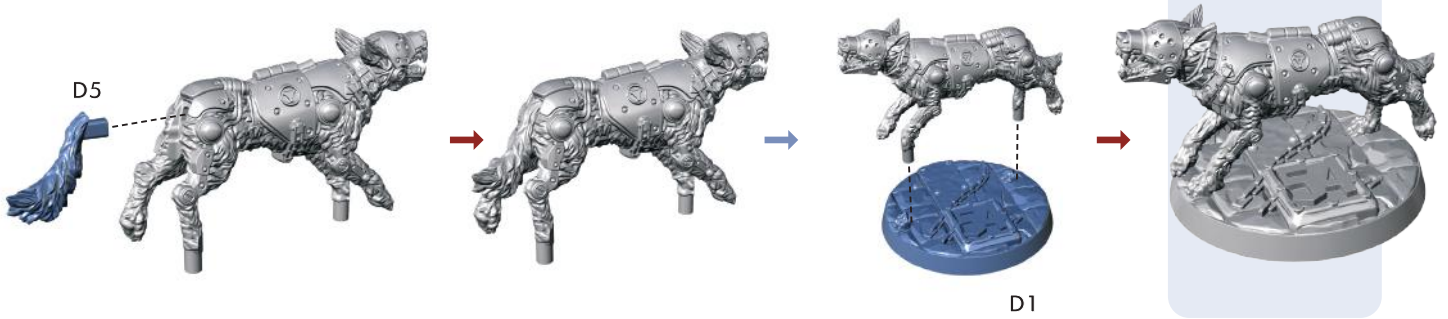


SPRUE NR: WOLF0012



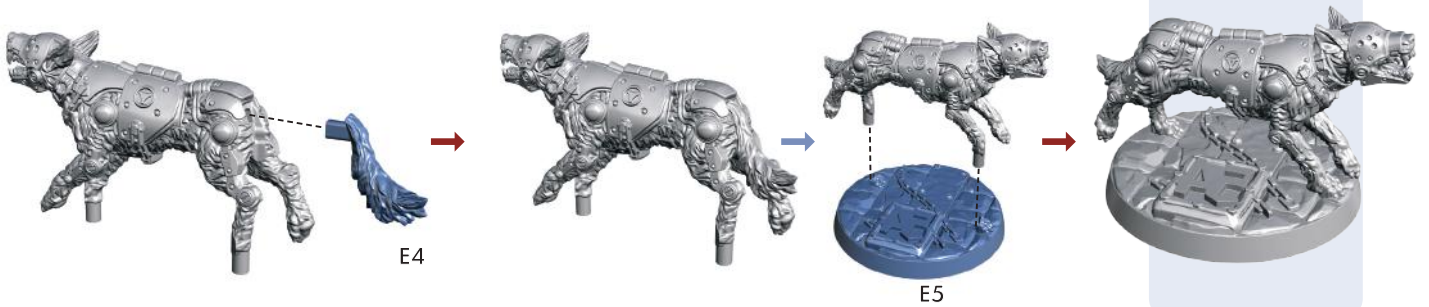
SPRUE NR: WOLF0009

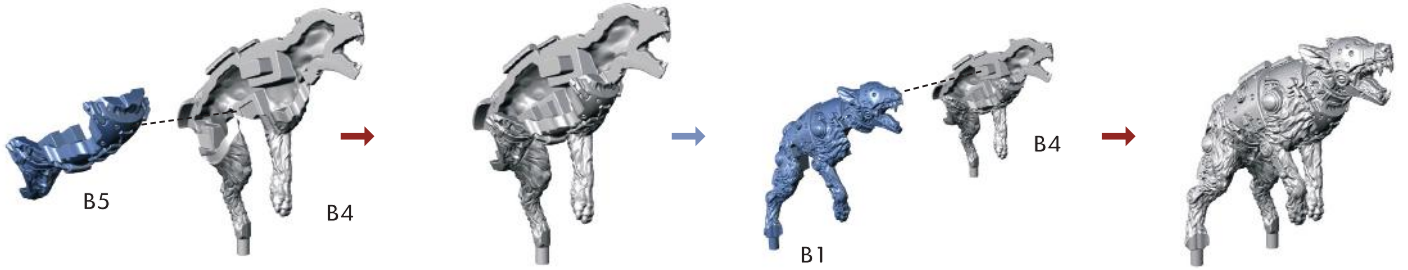
KAMPFHUND A 54



SPRUE NR: WOLF0009

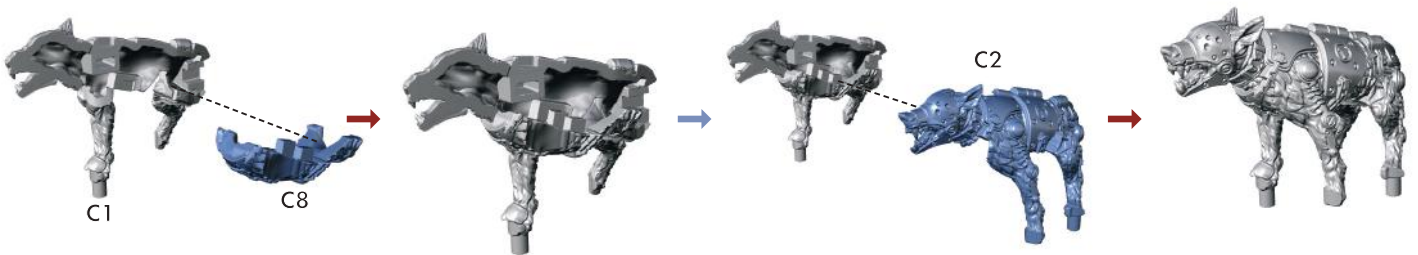
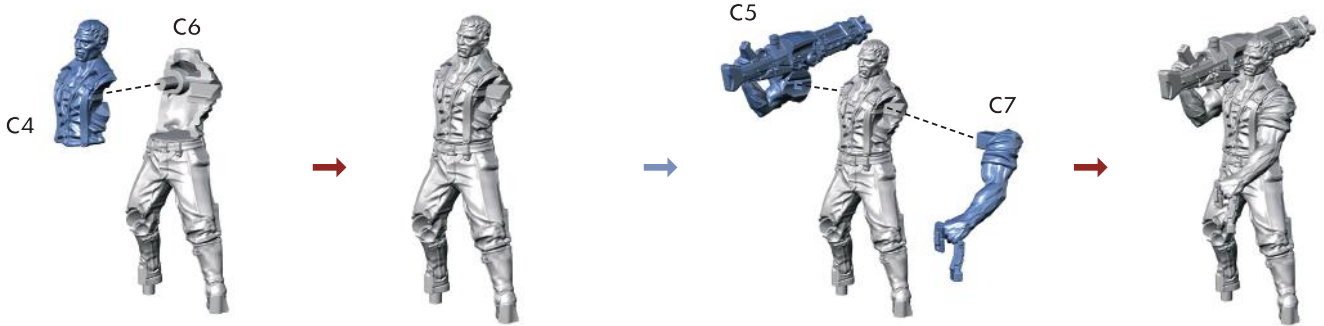
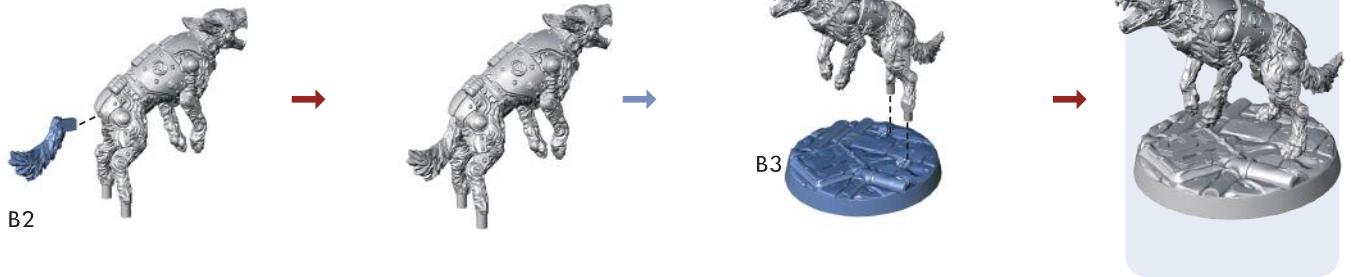
KAMPFHUND A 55





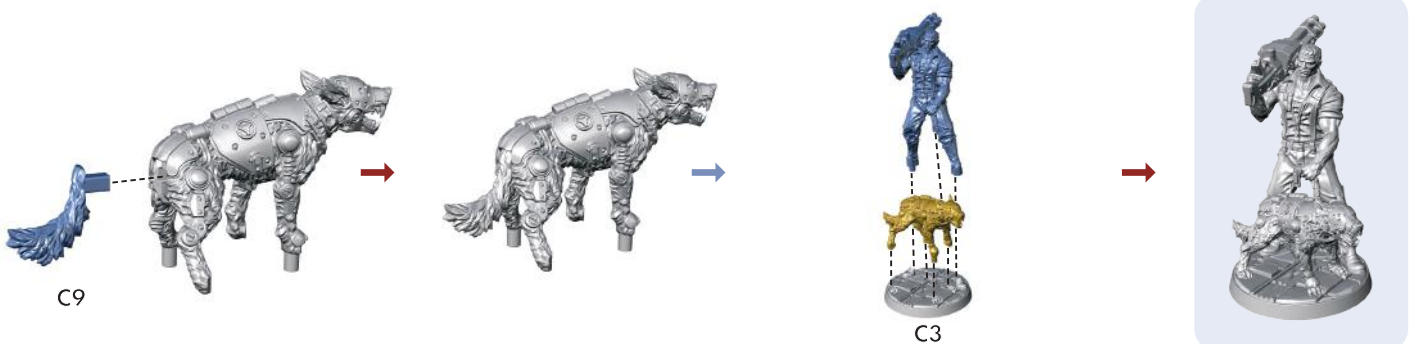
SPRUE NR: WOLF0009

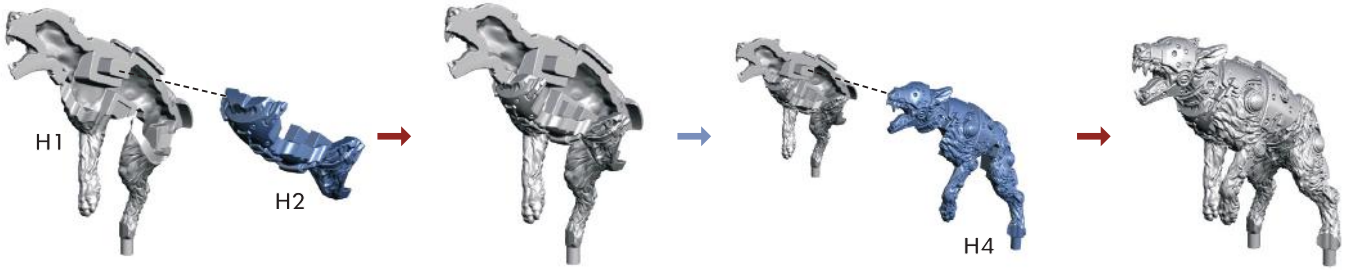
KAMPFHUND B 56



SPRUE NR: WOLF0009

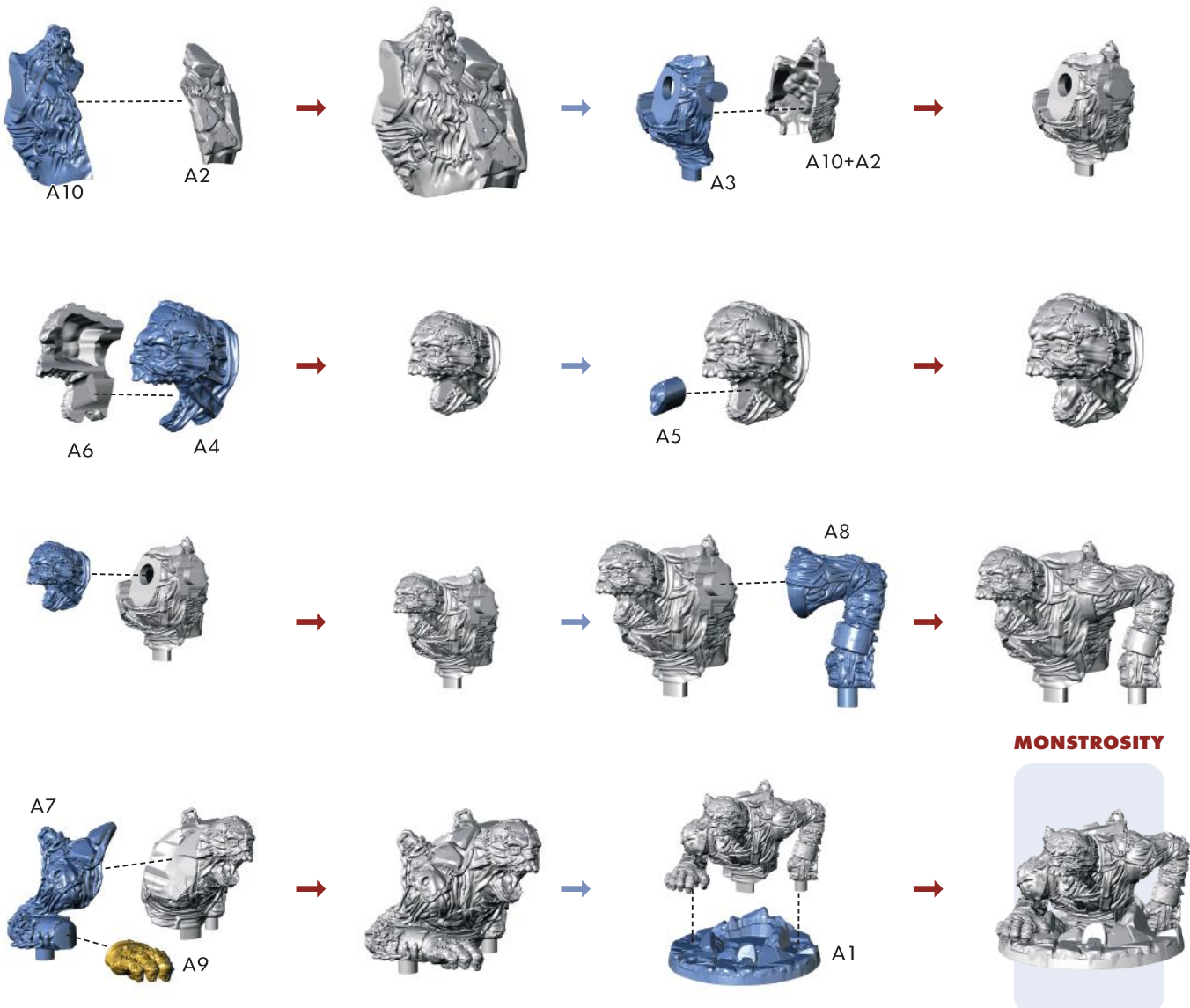
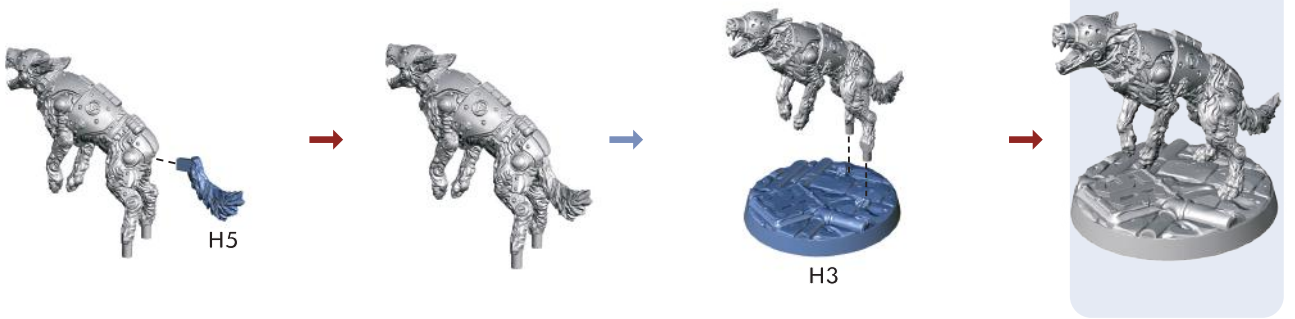
RUDI JÄGER





SPRUE NR: Wolf0009

KAMPFHUND B 57 (MIRRORED)



MONSTROSITY

SPRUE NR: Wolf00011

© 2021 Bethesda Softworks LLC, a ZeniMax Media company. All Rights Reserved.

Wolfenstein, id, Bethesda and related logos are registered trademarks or trademarks of ZeniMax Media Inc. and/or its affiliates in the U.S. and/or other countries. Archon Studio and the Archon Studio logo are TMs of Archon Spółka z o.o. Archon Studio is a ® of Archon Studio. All rights reserved to their respective owners. Archon Studio is located at Warsztatowa 8 Street, Piła, 64-920, Poland.

Actual components may vary from those shown. Printed components: Made in China. Miniatures: Made in Poland.

THIS PRODUCT IS NOT A TOY. NOT INTENDED FOR USE BY PERSONS 14 YEARS OF AGE OR YOUNGER.